

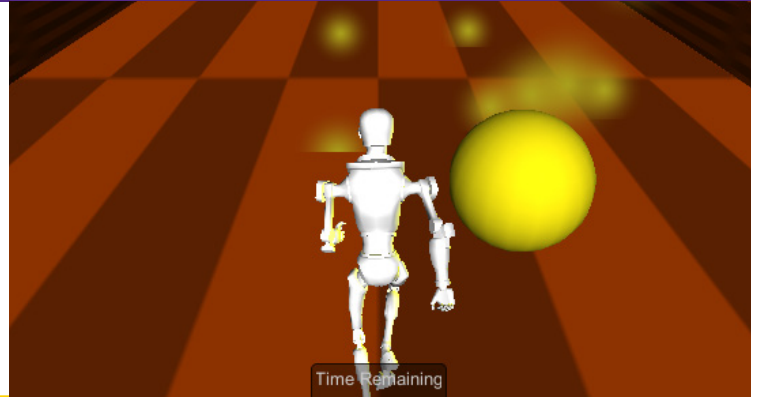


WESTERN
ILLINOIS
UNIVERSITY

INTEGRATED BACCALAUREATE AND MASTER'S DEGREE IN INSTRUCTIONAL DESIGN AND TECHNOLOGY

Higher Values in Higher Education
Academic Excellence • Educational Opportunity
Personal Growth • Social Responsibility

The Integrated Baccalaureate and Master's Degree Program in Instructional Design and Technology provides an opportunity for outstanding undergraduate Media and Instructional Design majors to complete both a Bachelor of Science degree in Media and Instructional Technology and a Master of Science degree in Instructional Design and Technology in five years. In addition to earning both degrees a year early, the integrated program may include additional opportunities to participate in a variety of experiential educational activities such as internships, a master's portfolio, an applied project, or a thesis.



Admission Requirements

Admission into the integrated program in Instructional Design and Technology (IDT) requires a minimum overall grade point average of 3.25 and a major GPA of 3.25. Applicants must submit the following:

- A current grade transcript that includes cumulative GPA and GPA in the IDT major
- Three letters of recommendation, two of which must come from IDT faculty
- An essay that includes academic goals, career plans upon completion of the program, perceived motivations, and attributes and abilities that will lead to success in the program
- The School of Graduate Studies application for admission

Degree Requirements

The Integrated Baccalaureate and Master's Degree Program (IBMP) in IDT offers interested and career-minded students one of the following plans:

- *Research Plan Option* which emphasizes research and concentrated work
- *Coursework Option* which emphasizes demonstration of skills across projects

Program of Study

The IDT department seeks to develop the ability to apply and achieve training and instructional goals in a wide variety of instructional settings, including corporate, higher education, and numerous other settings. Students will accomplish these objectives by learning to design, develop, and evaluate effective, efficient, and appealing instruction, instructional materials, and informational resources. Students in the IDT department have opportunities to acquire conceptual and hands-on experiences with effective teaching, learning, and collaborative design and development of professional instructional materials.

The integrated curriculum contains a range of core courses that set down a foundation in designing advanced technology applications and media. Each student is allowed the flexibility to further his or her

career objectives and special interests by choosing a variety of directed elective courses. There is also an excellent student-to-teacher ratio, and students will have many chances to interact with their instructors as they progress through the program. The program is focused around hands-on experiences. Career preparation is provided through the development of projects, personal portfolios, and résumés. The Senior Portfolio and Résumé Preparation course helps students search for jobs and develop their job interviewing skills. Currently, job placement is high in the field. The occupation of Instructional Designer has been listed by *CNN Money* as one of the "Top 100 Jobs in America."

Career Opportunities

Graduates from the IDT IBMP can work in many areas of corporate training, higher education, health services, public education, and instructional design consulting. Many graduates have broadened their training and instructional design practices with the assistance of e-learning technologies, while others have pursued career directions in industry and higher education. The demand for trainers and instructional designers continues to rise.

Faculty Expertise

Graduate faculty members are committed to helping their students apply the principles of instructional design to develop effective instruction and training. Professors in the department have doctorates in their field. Faculty members have extensive experience in their fields and are actively involved in a variety of professional organizations as well as publishing and presenting at the state, national, and international levels. Faculty have expertise in the following areas: online course development and evaluation, multimedia development, digital graphics, digital video editing and production, 3D modeling and animation, web page and database development, computer game development, computer simulations, instructional design and development, project management, performance technology, corporate training, and instructional theory and research.

Racquetball

Rules/Gameplay Lets see if you can guess the correct serve paths. (select any serve to start, followed by any other button that is not a serve) *note you have three hints available for help*

Equipment/Safety

Health Benefits/Stress Management

Reason to try

Test

[Click Here for a Hint](#)

Copyright 2010. By:Mike Dillon

Students in the IBMP are allowed to use 9 SH of “bridge” (“B”) courses to satisfy both the Bachelor of Science and Master of Science degrees in IDT. Three of the following courses can be used: IDT 433B, IDT 460B, IDT 480B, IDT 500B, IDT 505B, IDT 512B, IDT 516B, IDT 525B, IDT 530B, IDT 535B, IDT 536B, IDT 538B, IDT 560B, and EIS 500B. If taken after the undergraduate degree has been completed, the courses should not be taken with the “B” designator.

Contact Information

For admissions process and general program information, contact the School of Graduate Studies, Western Illinois University, 1 University Circle, Macomb, IL 61455, (309) 298-1806, (877) WIU GRAD toll-free, Grad-Office@wiu.edu, wiu.edu/grad.

For specific program questions, contact Dr. Leanda Hemphill, Graduate Advisor, Department of Instructional Design and Technology, Western Illinois University, 1 University Circle, Macomb, IL 61455, (309) 298-1186, LS-Hemphill@wiu.edu, wiu.edu/coehs/idt.

Integrated Degree Course Requirements

Students must complete the following to meet the BS degree requirements:

- University General Education Requirements (43 SH)
- Core Courses (37 SH)
- Directed Electives (9 SH)
- Open Electives (6-15 SH)
- Minor (18 SH)

Total Program: Minimum 120 SH

Students must complete the following to meet the MS degree requirements:

- Graduate Core Courses (11 SH)
 - Directed Electives (15 SH)
 - General Electives (3 SH)
 - Exit Options (select one of the following options)
 - Research Plan
 - IDT 600 Applied Project (3 SH) OR
 - IDT 605 Thesis (3 SH)
- Total Program: 32 SH**

- Coursework
 - IDT 603 Graduate Portfolio (3 SH)
 - General Electives (6 SH)
- Total Program: 35 SH**