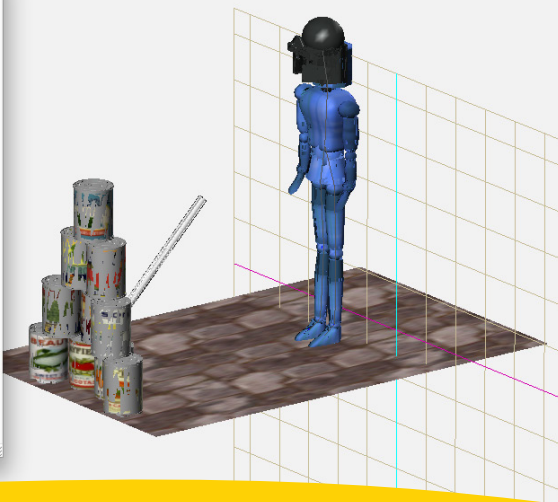
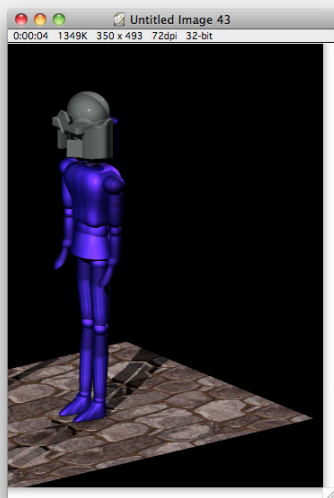


# Master of Science in Instructional Design and Technology (30 Semester Hours)



The Master of Science degree in Instructional Design and Technology at Western Illinois University is designed to prepare educational technology specialists, graphic designers, educational technologists, trainers in industry and business and classroom teachers to develop, produce and evaluate instructional and training materials. Courses are offered in various formats, such as online and weekend courses, with hands-on experience. Coursework for this degree can be completed online, or as a combination of online and face-to-face courses. Graduates of the program will enter or continue careers in instructional design, interactive multimedia, computer-based graphics and distance learning.

## Admission Requirements

All candidates for the Master of Science (MS) in Instructional Design and Technology (IDT) at Western Illinois University must meet the general admission requirements of the WIU School of Graduate Studies, including the successful completion of undergraduate coursework with a cumulative grade point average of at least 2.75 or an undergraduate GPA of 3.0 or higher in the last two years. If undergraduate GPA requirements are not met, the program will consider for admission applicants who have completed at least 12 semester hours (SH) of graduate coursework, with a cumulative graduate GPA of 3.20 or higher from a regionally-accredited university.

Candidates must submit a 1,000-word essay describing their reasons for pursuing a graduate degree in the field of IDT. Candidates must also submit three letters of recommendation from individuals who can attest to their academic potential. International students, who are not native English speakers, must meet standards set by the Center for International Studies. Applicants for the Technology Specialist emphasis must also meet additional conditions. Please contact the IDT department for more information regarding this option.

## Degree Requirements

Candidates pursuing the MS degree may choose from three exit options: Portfolio Plan, Applied Project Plan, or Thesis Plan. Most candidates take two to three courses per semester, completing the program in approximately one to two years. Candidates have six years to complete the degree.

The curriculum for the General Instructional Design and Technology emphasis is listed below. Contact the IDT program for the curriculum for the Technology Specialist emphasis.

- Core requirements (9 SH): IDT 500 Intro to the IDT Field (3 SH), IDT 505 Foundations of Instructional Technology (3 SH), and IDT 510 Principles of Instructional Design (3 SH)
- Directed electives (15 SH)
- Exit options (6 SH)
  - Portfolio Plan: IDT 603 Graduate Portfolio (3 sh) and Electives (3 sh),
  - Applied Project Plan: IDT 595 Technology Planning and Research (3 SH) and IDT 600 Applied Project (3 SH), OR
  - Thesis Plan: IDT 595 Technology Planning and Research (3 SH) and IDT 605 Thesis (3 SH)

## Career Opportunities

Graduates from the MS in IDT program work in many areas of public education, corporate training, higher education and health services. Many graduates have broadened their teaching or training practices with the assistance of learning technologies, while others have pursued new career directions in industry or higher education. The demand for trainers and instructional designers in many fields continues to increase.

## Faculty Expertise

Graduate faculty members are committed to helping students apply the principles of instructional design to develop effective instruction and training. Professors in the program have doctorates in their field. Faculty members have extensive experience in their fields and are actively involved in a variety of professional

## Program Location:

Macomb, Quad Cities, Online

## Contact Information

**Questions about the program:**  
Instructional Design and Technology Program  
Professor Hoyet Hemphill,  
graduate program director/advisor  
(309) 298-1091  
HH-Hemphill@wiu.edu  
wiu.edu/idt

**General admission questions:**  
School of Graduate Studies  
(309) 298-1806 or (877) WIU GRAD  
Grad-Office@wiu.edu  
wiu.edu/grad

*Higher Values in  
Higher Education*

Academic Excellence  
Educational Opportunity  
Personal Growth  
Social Responsibility



**WESTERN  
ILLINOIS  
UNIVERSITY**

organizations as well as publishing and presenting at the state, national and international levels.

Faculty have expertise in the following areas: online course development and evaluation, multimedia development, digital graphics, digital video editing and production, 3D modeling and animation, web page and database development, computer game development, computer simulations, instructional design and development, project management, performance technology, corporate training, P-12 technology integration in schools and higher education and instructional theory and research.

## Assistantship Opportunities

A limited number of graduate assistantships, which provide a monthly stipend and a tuition waiver, are available at the Macomb campus. Undergraduate and graduate GPAs, scholarship records, recommendations and a personal statement fulfill the criteria for awarding assistantships. Applications for assistantships must be made through the WIU School of Graduate Studies.

*Western Illinois University is an Affirmative Action and Equal Opportunity employer with a strong commitment to diversity. In that spirit, we are particularly interested in receiving applications from a broad spectrum of people, including, but not limited to, minorities, women and individuals with disabilities. WIU has a non-discrimination policy that includes sex, race, color, sexual orientation, gender identity and gender expression, religion, age, marital status, national origin, disability and veteran status.*

## Distinctive Features

The IDT MS degree program offers the flexibility for students to tailor their own program specifically to their career goals. Also, many of the courses, including all core courses, are completely online. Weekend academy elective courses provide hands-on experience for the working professional.

Graduate students often collaborate with faculty in research studies involving online course development, international training and collaboration, virtual worlds, K-12 technology integration, web page and database design and 3D modeling and animation.

## Post-Baccalaureate Certificate Programs

The program offers five post-baccalaureate certificates. All certificate programs are 18 SH except for the Educational Technology Specialist, which is mandated to be 24 SH. The certificates are as follows:

- *Educational Technology Specialist* – Prepares current teachers for the Illinois Technology Specialist Endorsement, and meets the educational requirements for this endorsement.
- *Online and Distance Learning Development* – Prepares educators, instructional designers and trainers to effectively use and develop resources for online and distance learning.

- *Instructional Media Development* – Prepares educators, instructional designers and trainers to effectively use and develop graphics, web pages, video and 3D animation for education and training deployment.
- *Technology Integration in Education* – Prepares educators for using technology in the classroom.
- *Workplace Learning and Performance* – Prepares educators, instructional designers and trainers for designing and managing training and performance improvement projects.

*For the Gainful Employment Disclosure, visit [wiu.edu/grad/gainfulemployment](http://wiu.edu/grad/gainfulemployment).*

## Featured Alumna

*I am very passionate about technology and education, and the master's degree in IDT provided me with expertise and tools to use them together more effectively when transferring knowledge and training people. These skills are extremely valuable, especially when dealing with teams that are spread across the world.*

– Alejandro Ramirez, software development engineer, Microsoft

*WIU launched its Instructional Technology MS program in 1996, and I was a member of the first class. Faculty and administrators recognized and nurtured my talents. They arranged for the resources I needed to initiate a research program involving the application of cognitive science analogical reasoning within instructional design. I did the hard work. I continue to refine this research program as the senior educational researcher at the NASA-sponsored Classroom of the Future. My studies at WIU prepared me with the knowledge and skills that are my professional foundation. Since graduation, I have collaborated with WIU faculty to conduct research or service to the field.*

– Debbie Reese, senior educational researcher, Wheeling Jesuit University



*“Given my prior undergraduate experience in IDT, I knew the quality of instruction at the graduate level would more than exceed my expectations, and provide me with the necessary skills to succeed in the world of instructional technology.”*

– Donnie Ingram, MS, 2005  
Senior Instructional Designer, St. Ambrose College