



WESTERN
ILLINOIS
UNIVERSITY

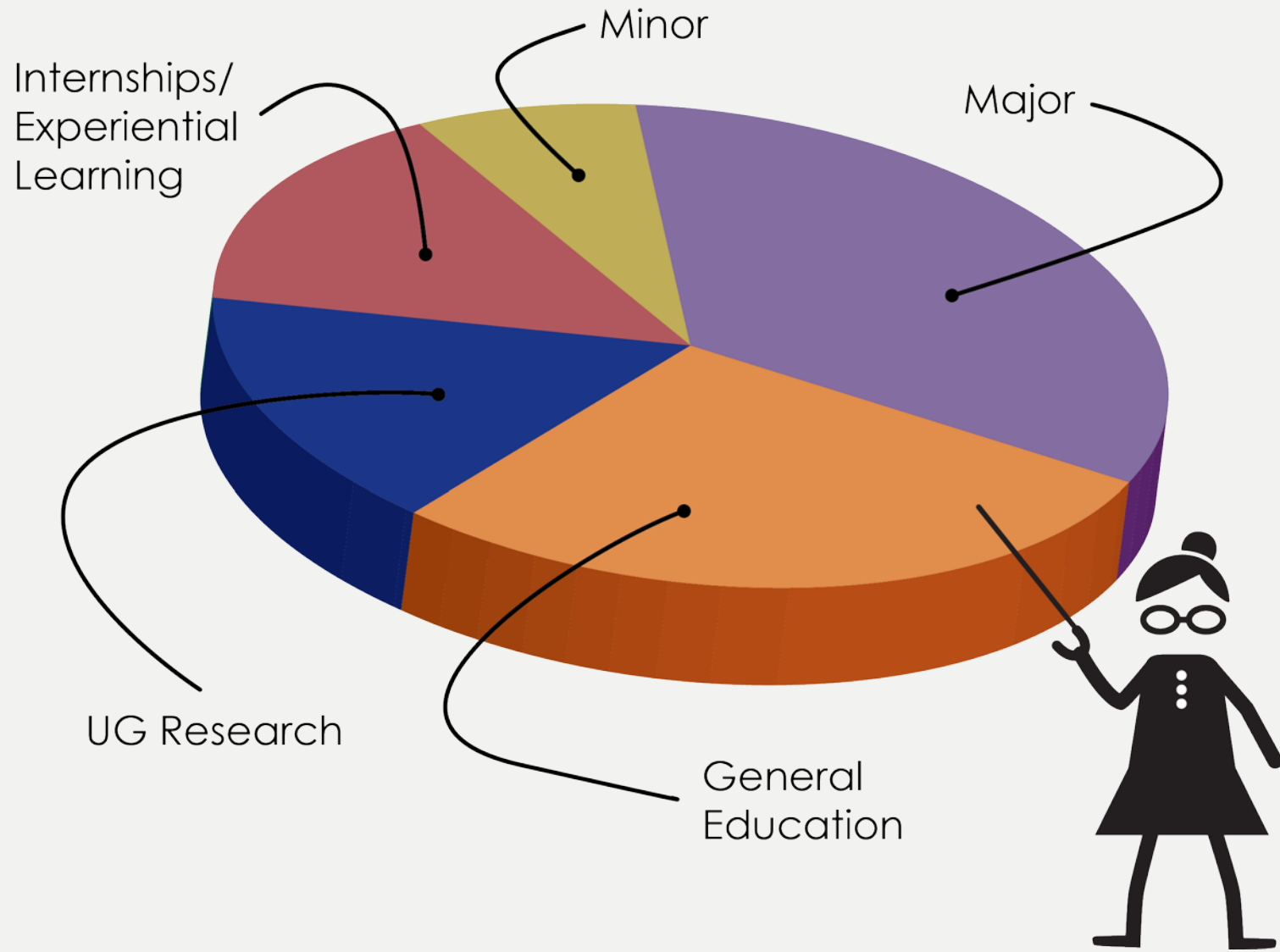


WESTERN
ILLINOIS
UNIVERSITY
Quad Cities

FY 16 Consolidated Annual Report

College of Arts & Sciences

Delivering a Small Liberal Arts
College Education in a Public
University Setting



FY16 Goals for Academic Success

1. Enhanced Culture for Teaching & Learning
2. Fiscal Responsibility & Accountability
3. Enhance Academic Affairs Role in Enrollment Management & Student Success
4. Focus on International Recruiting & Educational Opportunities
5. Facilities Enhancement & Technology Support

Enhanced Culture for Teaching & Learning

Maintain Rigor & High Academic Standards

Signature Lectures, Conferences, & Programs

JOHN HALLWAS LIBERAL ARTS LECTURE	LAST LECTURE SERIES CAS Student Council	LIAISONS SERIES AAS	MORROW LECTURE BIOL/PHYS
BIOLOGY DAY BIOL	GABLER LECTURE GEOG	MAGLIOCCO LECTURE ENG	UPPER MISSISSIPPI RIVER CONFERENCE IES
ANNUAL MATH TEACHERS CONFERENCE MATH	MARY OLIVE WOODS LECTURE PHIL/RELS	AMERICAN DEMOCRACY PROJECT POLS	COLLOQUIA SERIES PSY

Outstanding Students



Hannah Drake

Forensic Chemistry major

2015 Lincoln Academy of Illinois' Student

Laureate Award

Award Winning Faculty



Dr. Sandra McFadden
Psychology
Distinguished Faculty Lecturer

Recipients of Provost's Awards for ...

Internationalizing
the Campus



Dr. Timothy Roberts
History

Advising

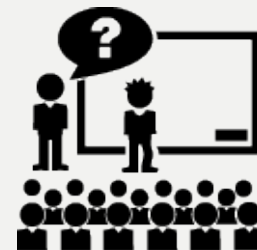


Mr. Theodore Schultz
School of Nursing

Faculty Scholarly/Creative Activities

Publication Type	FY16*	FY15	FY14	FY13	FY12
Books	9	10	10	15	19
Chapters/monographs/refereed articles	147	137	144	116	254
Creative activities (international)	144 (83)	150 (45)	154 (41)	148 (10)	85 (8)
Conference presentations (international)	367 (60)	420 (66)	522 (80)	424 (64)	380 (44)

(*FY16 data are current through 29-Feb. 2016)

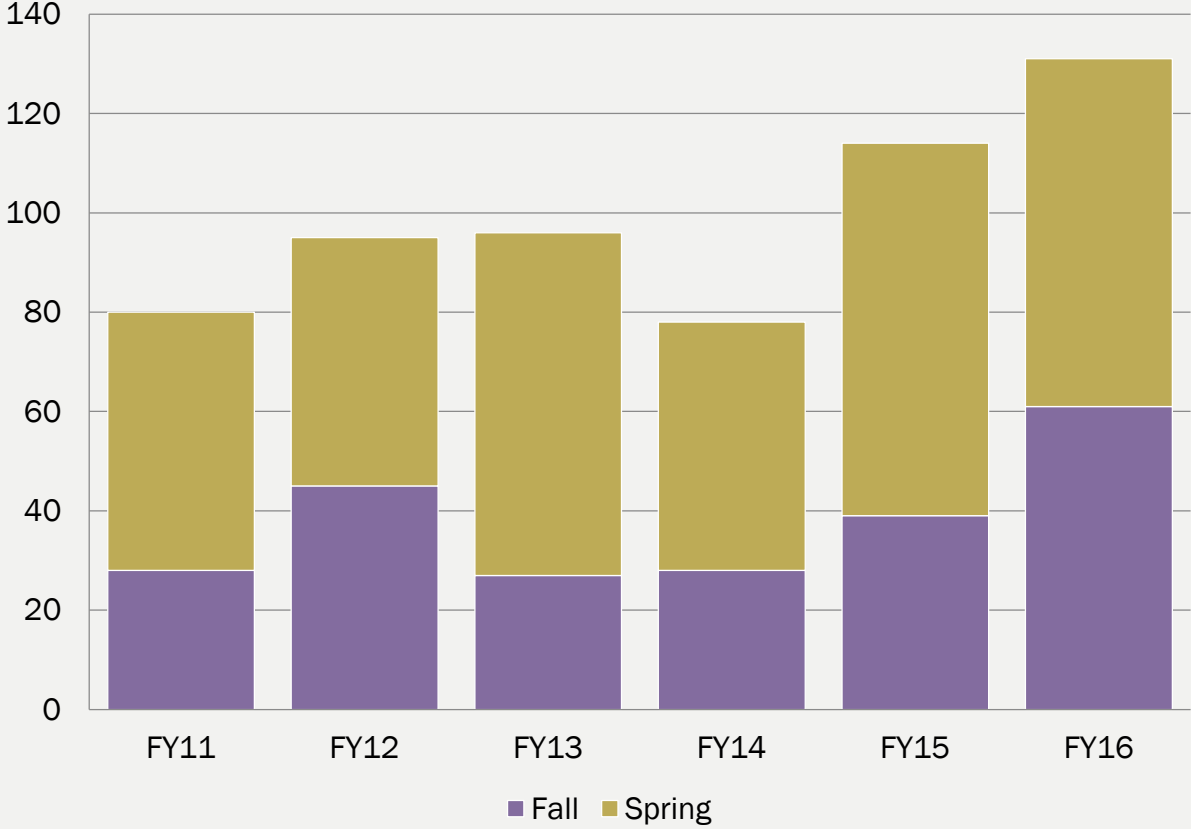


Strengthen Academic Programs through Review & Discipline-Specific Accreditation

- AY15 IBHE reviews – deferred to Fall 2016
 - Psychology (BS & MS)
- Support the School of Nursing
 - Received 10 year CCNE accreditation
- Pursue AAFS accreditation - CHEM
- Continue support for University-wide teacher education initiatives
 - Support revision of teacher certification options per the new Illinois Professional Teaching Standards.

Student Research & Creative Activities

CAS UG Research Awards
(Spring 2016 applications are under consideration)



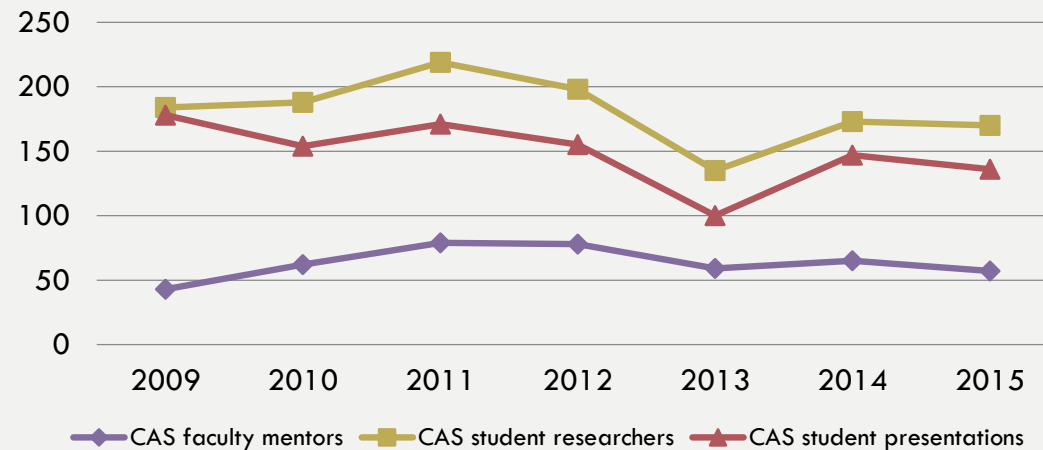
- 131 (est.) CAS UG Research Grants (+15% from FY15)
- 10 recipients of Norman & Carmelita Teeter UG Research Awards (\$300 ea.)

Thomas E. Helm

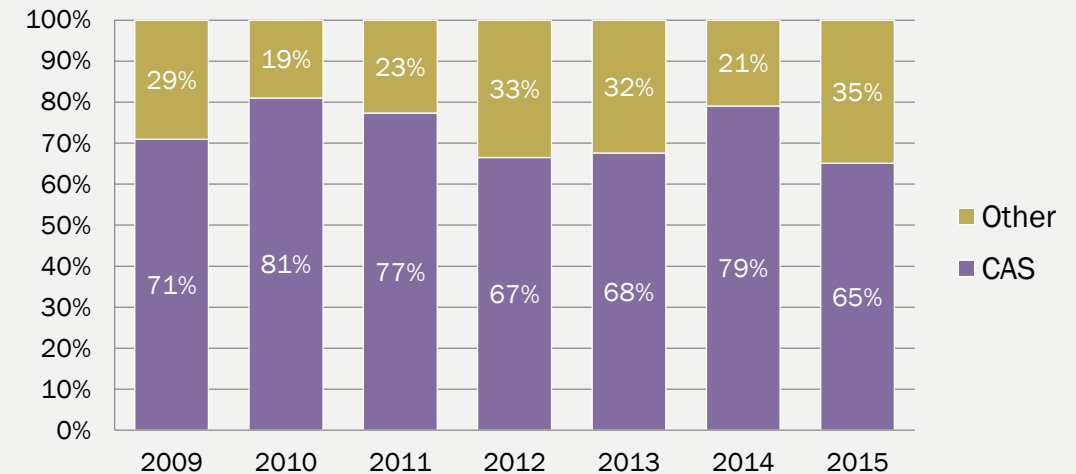
Undergraduate Research Day (URD)



CAS URD Participation
2009 - 2015



URD Presentations
2009 - 2015



Research Inspiring Student Excellence

Providing inquiry-based learning experiences to highly talented students to help them become the leaders of tomorrow

- Scholarships offered to support:
 - four \$3,000 scholarships for UG student summer research
 - travel awards to attend conferences
 - graduate school applications
 - scholarships for international students and members of traditionally underrepresented groups

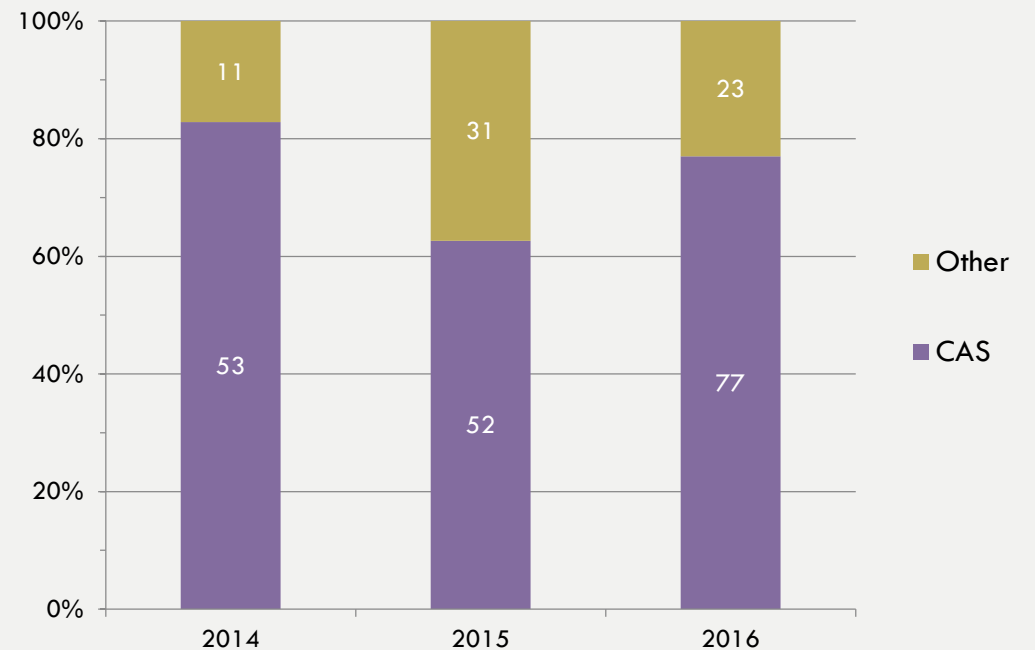


- Achieved through targeted multidisciplinary fundraising
 - P. James Nielsen (Biological Sciences Emeritus Faculty)
 - Margaret and Cecile Wong (WIU Class of '73)
 - Frank Rodeffer (WIU Class of '61)

3rd Annual Graduate Research Conference

- CAS and departments proud cosponsors
- 77 CAS GR student participants
- 7 of 7 recipients of GR student research awards

3rd Annual WIU Graduate Research Conference



Contributions to University-Wide Initiatives

■ Expand scope of the Centennial Honors College

- *CAS participation in:*
 - The Presidents' Institute
 - Presidential Leadership Class
- *Mentoring students for nationally competitive scholarships*
- *Strong participation in Thomas E. Helm URD*



CENTENNIAL
HONORS COLLEGE

Internships & Service Learning



WIU in DC
Internship Program

*Now a full-time
employee!*



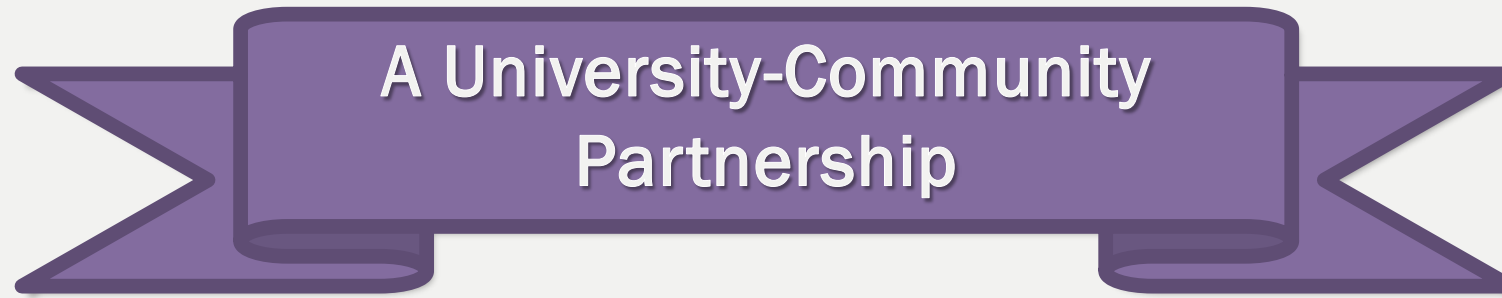
Joseph Kallenbach (POLS)
interned for Rep. Peter
Roskam (R-IL) in Spring 2015.



Joi Wells (POLS) interned in
the office of Rep. Bobby
Rush (D-IL) in Fall 2015.

Internships & Service Learning (continued)

- Pharmacology externships – MDH Pharmacy
- POLS – student internships with
 - McDonough County Public Defender’s Office
 - Sen. John Sullivan’s Office
 - City of Macomb
- PSY student internships:
 - 5 Clinical Community Mental Health GR students interned in IL, MO, and CO.
 - 7 School Psychology graduate program interned at special education co-ops and school districts across Illinois.



■ Inaugural Macomb Poetry Festival (April 21 – 23)

- A joint collaboration between the Department of English, the City of Macomb, the Macomb business and arts communities.
- Features readings of poetry and lectures about poetry throughout Macomb and on the WIU campus.
- Contributors include:
 - John E. Hallwas
 - Poets David Wright and Michelle McDannold
 - Poetry readings and activities for people of all ages throughout the community.



A University-Community Partnership

■ Social Entrepreneurship Salon

- A collaborative effort between CAS, CBT, CoFAC, and CoEHS.
- Two external speakers discussing community development and enterprise development.
- Focus is on promoting community well-being as the bottom line outcome.
- Spring 2016 - Jim Bergman and Dan Carmody spoke on their non-profit work.
- Local co-sponsorship is being sought.

Engagement on the QC Riverfront

- 8th Annual Upper Mississippi River Conference
 - 143 conference attendees
 - IES sponsored:
 - Student Summit attended by 117 regional high school students
 - Research poster session 16 students from QC area colleges/universities
 - ENVR, BIOL, & GEOG graduate students presented 5 research posters.



Upper Mississippi River Conference

Weaving multiple uses into sustainable river communities

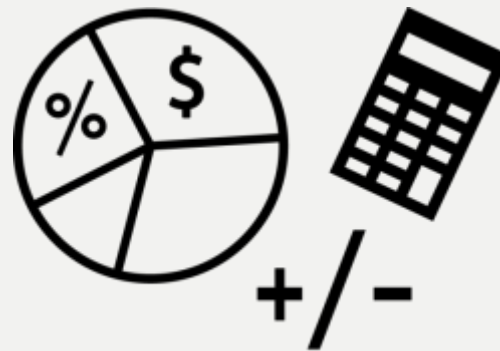


Jason Hunt, an Environmental Science Ph.D. student discussing his work on rivers as vectors for disease carrying mosquitoes with a student from Augustana College. Photo by Robin Bauerly.

Fiscal Responsibility & Accountability

Budget Strategies & Priorities

- College fundraising priorities:
 - Student scholarships and student support
 - Bricks and mortar
 - Equipment
- Continue to develop alternative funding sources.
- Review lab charge criteria to assess potential to cover equipment repair and maintenance costs.
- Maintain an open office support staff position open in the CAS Dean's Office.



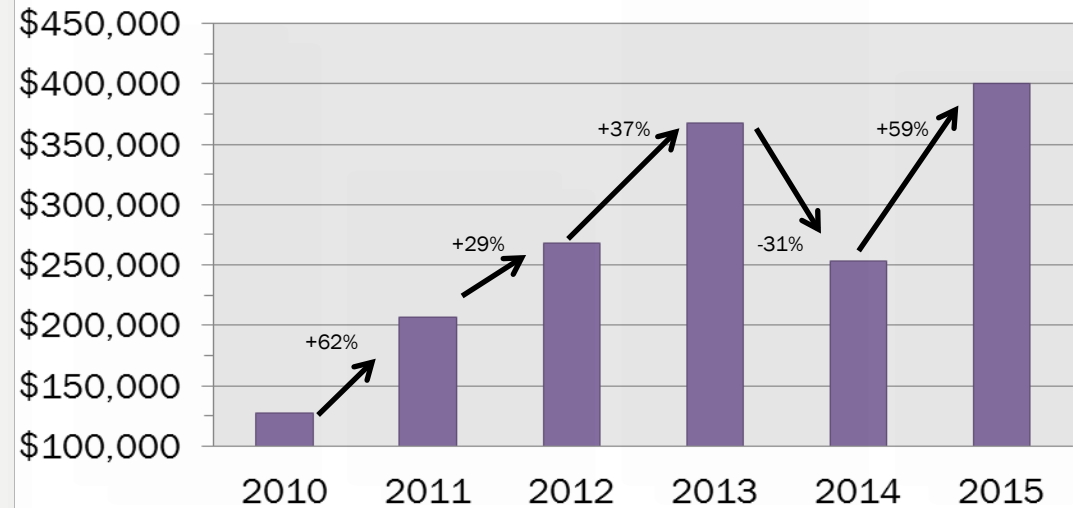
WIU Foundation Funds

FY16* Expenditures

Purpose	Amount
Student scholarships	\$314,875
Contractual expenses	\$83,210
Consumables, equipment, etc.	\$2,512
TOTAL	\$400,597

(*FY16 data through 29-Feb. 2016)

Annual Foundation Expenditures



Grants & Contracts & Local Accounts

	FY16*	FY15	FY14	FY13	FY12
Grants & Contracts					
Number of proposals submitted	28	18	25	22	18
Funds requested	\$3.0M	\$2.4M	\$3.7M	\$3.1M	\$1.2M
Funds received	\$827,240	\$576,829	\$742,960	\$188,047	\$366,947
Local Accounts	\$132,337	\$119,210	\$102,105	\$107,394	\$123,911

(*FY16 data through 29-Feb. 2016)

Internal Reallocations

- We thank the Provost for the following:

Description	Enhancement
Provost Travel Awards	\$35,969
Special Contributions (\$86,000, Nursing; \$15,000, GIS Software; \$198, Misc.)	\$101,198
Graduate Student Support (continuous; LAS, 2/3 GA; Nursing, 1 TSA; Physics QC, 1 TSA)	\$20,120
TOTAL	\$157,287

Internal Reallocations (continued)

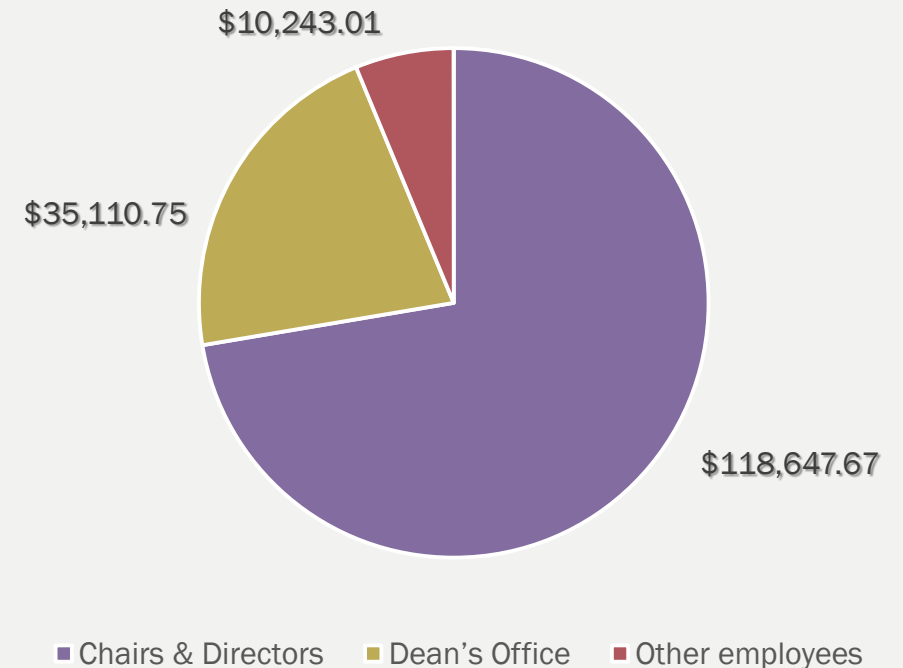
■ Contributions from CAS

Description	Enhancement
Conference registration	\$8,170
UGR & Creative Activity Grants	\$17,863
URC Awards	\$3,632
Recruitment Grants	\$4,905
Graduate Student Research & Professional Development	\$3,126
Professional Development – Admin., Faculty & Staff	\$2,291
Miscellaneous Department Support	\$21,242
TOTAL	\$61,229

FY16 Staffing and Operational Reductions

- Journalism merged with Broadcasting
 - \$228,015/3 faculty less addition of 1 Film Studies faculty (continuous savings).
 - One time savings \$182,416 including sabbatical & temporary replacement.
- Dean's Office
 - Support Staff: \$12,513 (one time savings).
 - \$36,206 if continuous.
- Chemistry
 - Office Support Assistant: \$25,272 (continuous savings).
- Chemistry and Physics
 - Electronics technician \$18,585 (one time savings).
 - \$49,560 if continuous.

- FY16 Non-negotiated Employee Furlough/Voluntary Pay Reduction
 - \$164,001.43 total



Enhance Academic Affairs Role in Enrollment Management & Student Success

- Implemented and reviewed undergraduate, graduate, and international student recruitment plans for each department/school.
- Discipline-specific recruitment days.
 - Departments of Biological Sciences, Philosophy, and Psychology.
- Continue to expand distance learning opportunities.
- Continuing to assess ways to better serve students starting in high school.

- Continued to support revised FYE - CAS Deans.
- Active partnerships with OE OA and DRC to ensure support, access, & success of our students, faculty, staff, & administrators.
- Growing 2+2, 3+2, & linkages programs.



Focus on International Recruiting & Educational Opportunities

Increase Participation & Number of Study Abroad Opportunities

■ Foreign Languages & Literatures

- WISE Spain
- WISE Costa Rica
- GH299-Berlin/Vienna: European Capitals Yesterday and Today
- Culture & Language in Germany

■ English

- The World of Harry Potter

*Student support
provided through
the Kline Fund*

Facilities Enhancement & Technology Support



WIU-QC Implementation & Planning

Phase 1

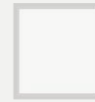
Phase 2

Phase 2½

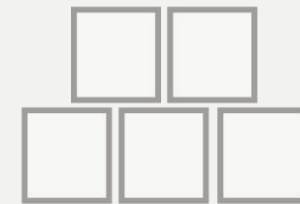
Phase 3



20k s.f.



~100k s.f.



Completed:



Almost done:



No change:



Fiscal Year 2017

Major Objectives

Representative Major FY17 Initiatives

Living-Learning Communities



Bio Life



Community of Liberal Arts &
Sciences Students



Women in Science

Representative Major FY17 Initiatives

■ Focus on Internships

- Maintain and continually improve the CAS internship web site, “Opportunity Knocking”



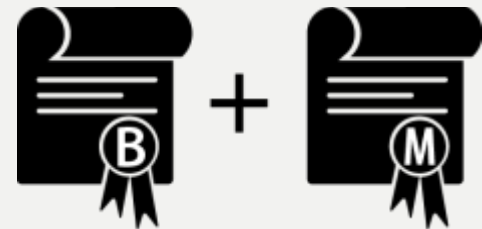
<http://www.wiu.edu/cas/about/internships/index.php>

- Advancement & Development:
 - Student scholarships
 - Faculty development and travel
 - UG research & creative activities
- Promote CAS Essential Skills
 - Collaborative Culture of Writing
- Administrative and program enhancements to the Liberal Arts & Sciences Programs
 - Formalize & implement LAS operating papers
 - Implement new administrative structure

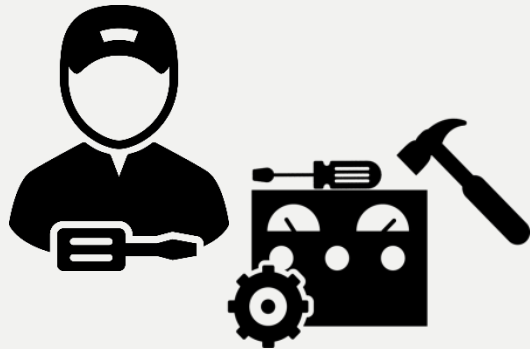
- Enhance/expand support for student research & experiential learning



- Support revised FYE
- Develop new integrated bachelors & masters degrees
- Review enhanced CAS curriculum
- Continue support of signature lectures, conferences, & projects
- Explore new curricular opportunities through collaboration with other colleges



- Evaluate opportunities and challenges of IBHE and Provost program reviews
- Hire a College-level technician who can maintain and repair scientific equipment



- Explore Nursing post-baccalaureate degrees
- Support a stand-alone, independent School of Nursing

Strengthen academic programs through review & discipline-specific accreditation, FY17

- Continue support of Teacher Education programs and School of Nursing
- Pursue accreditation for Forensic Chemistry



- IBHE program reviews for:
 - Women's Studies (B.A.)
 - Chemistry (B.S. & M.S.)
 - Forensic Chemistry (B.S.)
 - Physics (B.S. & M.S.)
 - Psychology (B.S. & M.S. deferred from previous FY)

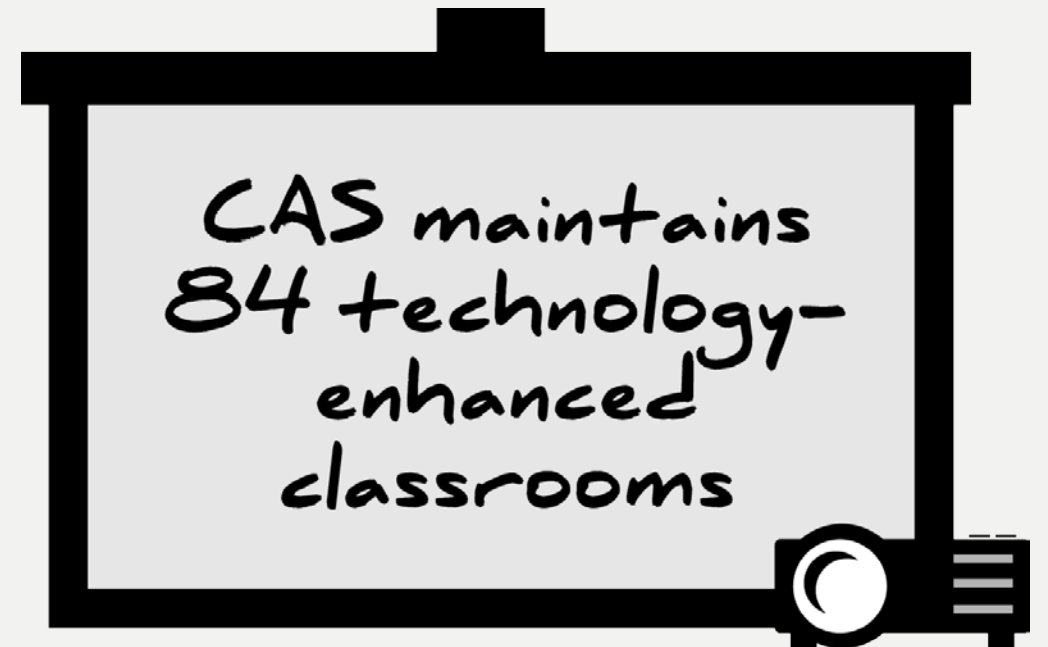
FY17 Technology Priorities & Plans

Technology Priorities

1. Infrastructure (technology-enhanced classrooms, videoconferencing, *etc.*)
2. Equipment (computers for faculty, staff, & classroom labs, presentation equipment in enhanced classrooms, *etc.*)
3. Personnel

Technology Goals/Objectives

- Maintain functioning technology-enhanced classrooms
- Increase the number of classrooms with electronic presentation capability
- Continue replacement of department classroom lab computers



- Maintain working computers for faculty and staff
 - 34 computers for faculty and staff replaced
- Partnering with uTech to pilot a thin-client, server-based desktop system.
- Restructure College IT staff.



FY17 Internal Reallocations & Reorganization

IBHE Low Performing Program Review/APER Programs Under Review

AAS

GEOG

PHIL

RS

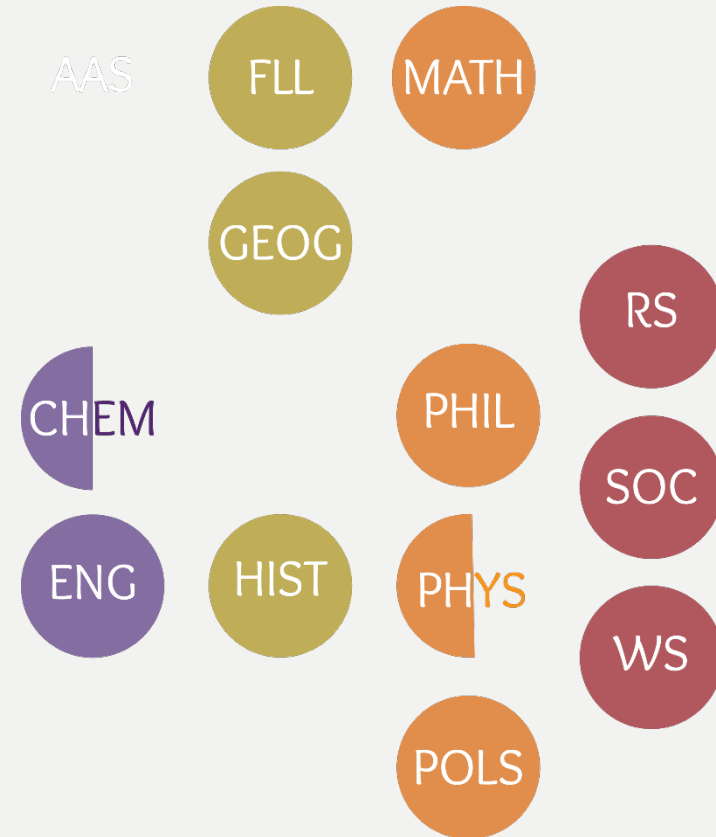
WS

Impact of Faculty Layoffs – FY17

Degree granting units in CAS



Units directly impacted by layoffs



Strategies to Seek Additional Resources

- Promote the submission of grant applications.
 1. OSP grant writing workshops
 2. Support for travel to meet with agency directors
 3. Enhancement of new faculty opportunities to prepare grants

- Support relationships with outside agencies.
 1. GIS Center & the City of Macomb
 2. Hospitals affiliated with the Clinical Laboratory Science Program
 3. Build on MOUs with U.S. Fish & Wildlife Service & U.S. Army Corps of Engineers

- Implementation of laboratory charges
- College advancement efforts – coordinated with WIU Foundation and the VPA&D
- Advocate for the use of COPS funds to effect long-term improvements to CAS facilities



Status of Long-term Funding Goals

1. Support of faculty and student travel

- *A dedicated Foundation account was created and funds are being solicited*
- *UG & GR conference travel continues to be funded from appropriated budget & Teeter UG Undergraduate Research Awards*

2. Support Substance Abuse Program

- *Ongoing donor support secured*

3. Support for multidisciplinary forensic laboratory (PSY, NURS, ANTH, CHEM)

On hold
pending private
support

4. Support the Alice L. Kibbe Life Science Station

- *Smaller feeder and foundation-based grants have been applied for to lay the groundwork for NSF support.*

5. Support for enhancements to the Nursing Program

- *Grant opportunities continue to be explored.*



WESTERN
ILLINOIS
UNIVERSITY
Quad Cities

WIU-Quad Cities

UG Majors & Minors at WIU-QC

SP16 UG Majors

1. BLAS (47)
2. ENG (26)
3. Foreign languages & cultures (1)*
4. PSY (1)*
5. NURS/Pre-nursing (2)*

SP16 Minors

1. AAS (1)
2. ANTH (1)
3. Creative writing (1)
4. ENG (15)
5. ENVR (8)
6. Forensic PSY (1)
7. HIST (16)
8. MATH (3)
9. Law & society (1)
10. Neuroscience (1)
11. PHIL (1)
12. Prof. writing (5)
13. PSY (68)
14. RS (2)
15. SOC (41)
16. SPAN (4)
17. WS (9)

GR Programs at WIU-QC

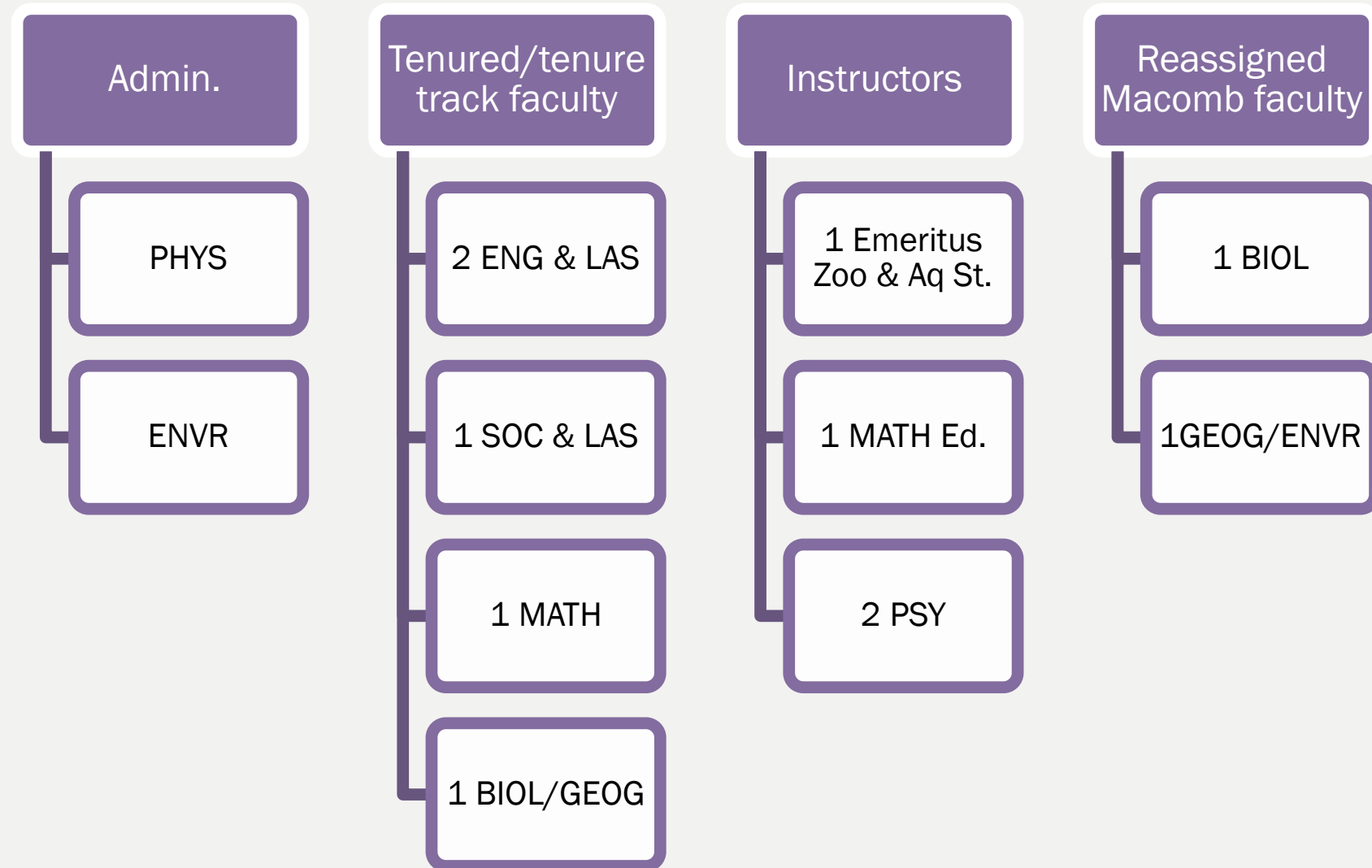
SP16 GR Majors

1. BIOL (18)
2. ENG (13)
3. ES Ph.D. (4)
4. MLAS (2)

SP16 Post-Baccalaureate Certificates

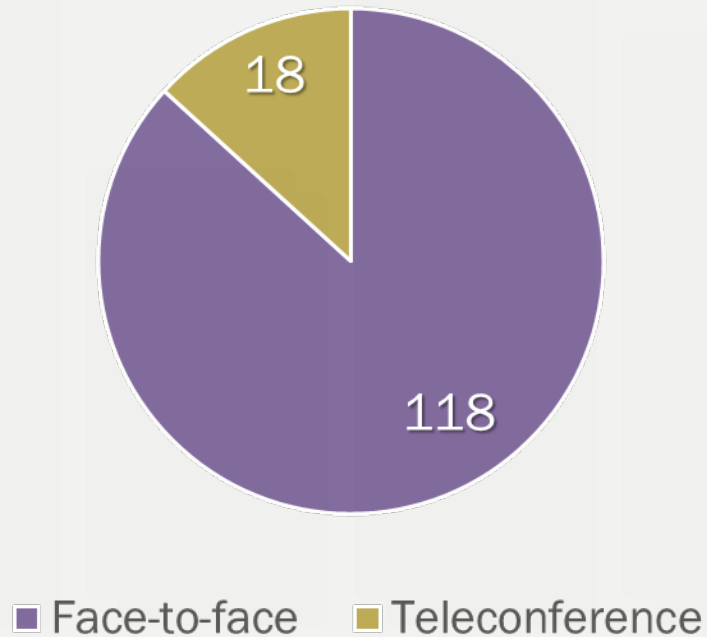
1. Environ. GIS (7)
2. English (2)
3. Zoo & Aquarium St. (10)

CAS Faculty on the QC Campus



CAS Courses Taught on the QC Campus

Course Delivery Methods
136 total courses offered



Courses were taught by 46 faculty from both WIU campuses.

New & Emerging Programs at WIU-QC



Environmental Science Ph.D. students testing a remotely operated vessel used to make *in situ* observations of aquatic environments.

- Ph.D. in Environmental Science: Large River Ecosystems
- Assessment of B.A. in Sociology
- Assessment of POLS minor at WIU-QC

CAS Planning & Priorities WIU-QC

- Continue enhancement of the Ph.D. in Environmental Science
- Review and enhancement of the LAS Program
- Support commitments to General Education
- Provide support for the Engineering Program
- Assess the opportunity for a social sciences major
- Continue exploration of affiliative agreements
- Explore offering of the introductory Physics sequence

FY17 Resource Requests

Request for New Operating Resources

Personnel Requests

Priority	Unit	Request	One-Time Funding (FY17 Only)	Continuous Funding (Beginning FY17)
1	BIOL	Advisor		\$ 60,840*
2	GEOL	Rehire Visiting Lecturer in GEOL		\$ 36,621
3	FLL	Tenure-track Position: French position (w/ability to teach Spanish; a one year increase)		\$ 58,446*
4	CAS	Learning Assistants (2) for Physics Programs		\$ 15,088*
5	POLS	Rehire Associate Faculty Position for Constitutional Law		\$ 7,978*
6	NURS	Rehire Part Time Associate Faculty		\$ 166,678*
7	CAS	Science Equipment Repair Manager for BIOL/CHEM/PHYS		\$ 55,000*
8	CHEM	Change Visiting Professor to Unit A		\$ 57,861*
TOTAL				\$467,012

* A permanent increase in base funding.

Request for New Operating Resources

Non-Personnel Requests

Priority	Unit	Request	One-Time Funding (FY17 Only)	Continuous Funding (Beginning FY17)
1	CAS	Replacement Faculty and Staff Computers Aged 7 Years or Older	\$79,875	
2	CHEM	Atomic Absorption Spectrometer	\$35,000	
3	POLS	Support Travel to Mock Trial Competition		\$5,000*
4	CHEM	Service for Gas Chromatograph	\$1,688	
5	PHYS	New Photon/Quantum Mechanics Lab	\$29,807	
6	NURS	Baby Sim-pad	\$4,100	
7	POLS	Increase Operating Budget to Model UN Simulation for Students		\$3,500*
8	PHYS	Lower Division Lab Upgrade - iMacs for Gen Ed Labs (PHYS 150 and 101)	\$11,100	
9	ENG/PHIL	Support for CLASS Living/Learning Community	\$1,650	
10	CHEM	New Ice Machine for Biochemistry and Forensic Chemistry Labs	\$6,500	
11	BIOL	6 Cart Mounted LCD Presentation Systems for Biology Teaching Labs	\$18,000	
12	BIOL	Safety Showers for Waggoner Hall Biology Laboratories	\$10,000	
TOTAL			\$197,720	\$8,500*

* A permanent increase in base funding.

Request for New Operating Resources

Request for Facilities Over \$100,000

Priority	Unit	Request	Continuous Funding (Beginning FY17)	Continuous Funding (Beginning FY18)
1	CAS	Construction of a new science building & remodel Currens Hall	\$61,138,000	
2	BIOL	Construction of New Classroom/Lab Building at Kibbe Field Station		\$495,764
TOTAL			\$61,138,000	\$495,764



Many thanks
for your time
& attention

