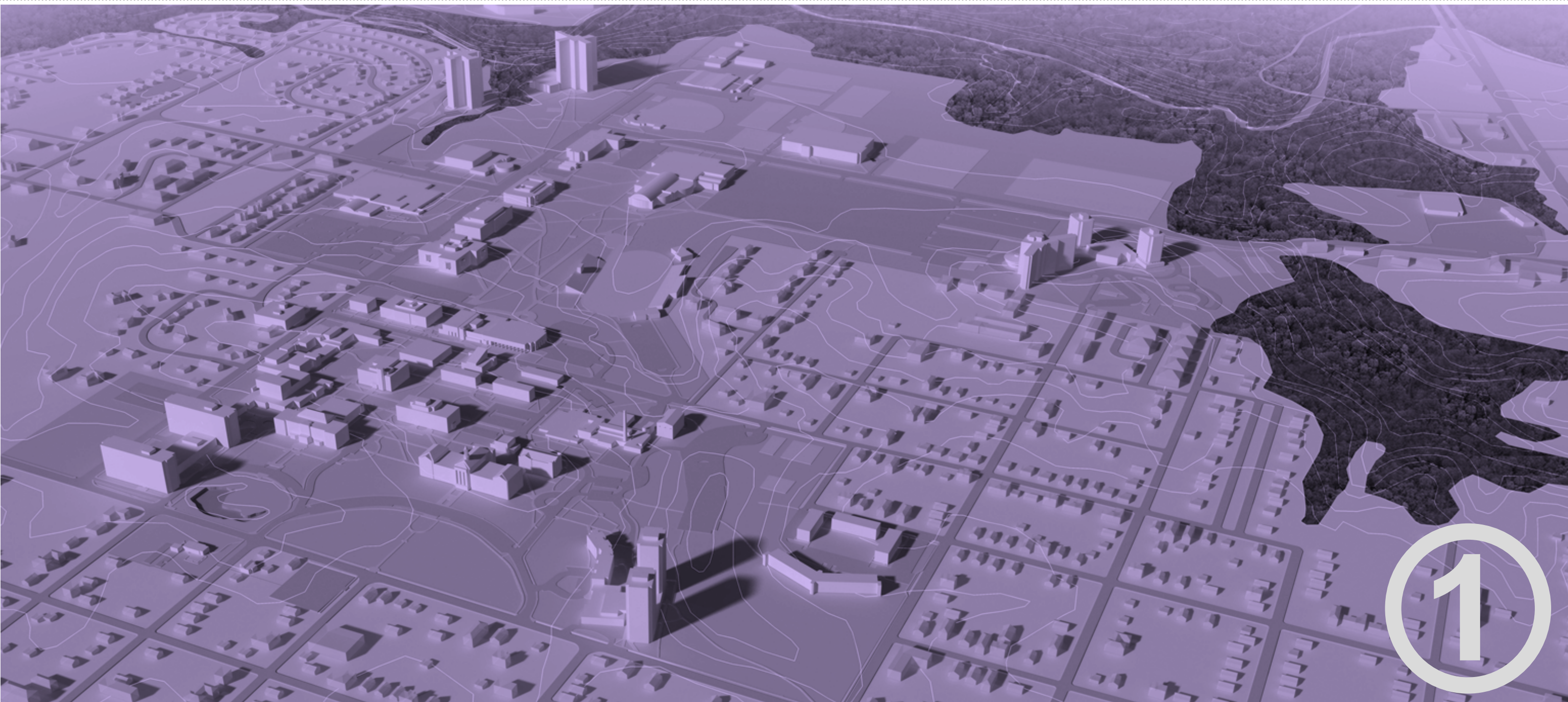


Visioning. Alternatives. Consensus.

- 1 Schedule & Process
- 2 Reaction to Alternatives
- 3 Preliminary Master Plan
- 4 Next Steps

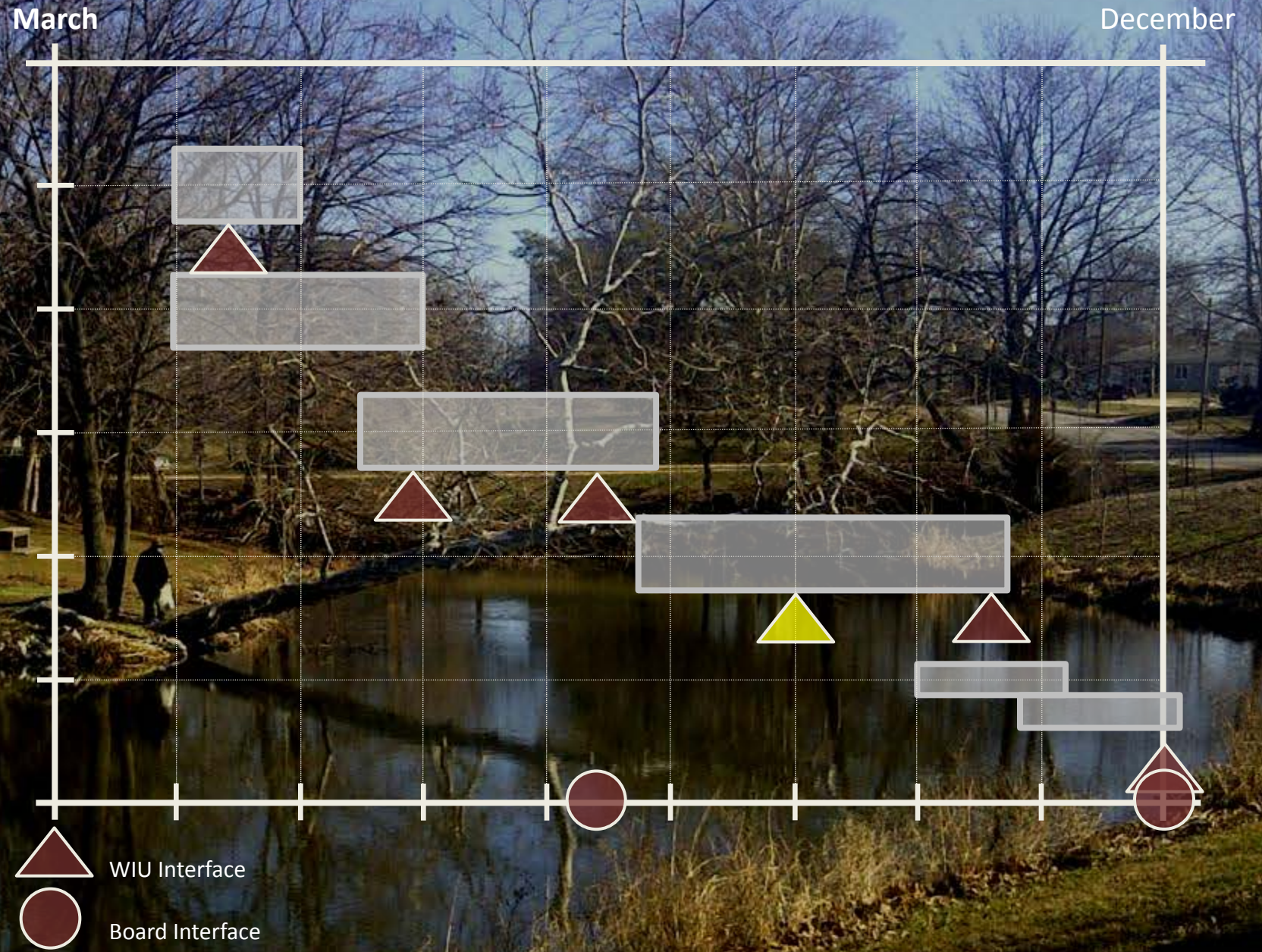


Schedule & Process



Schedule

PHASE II

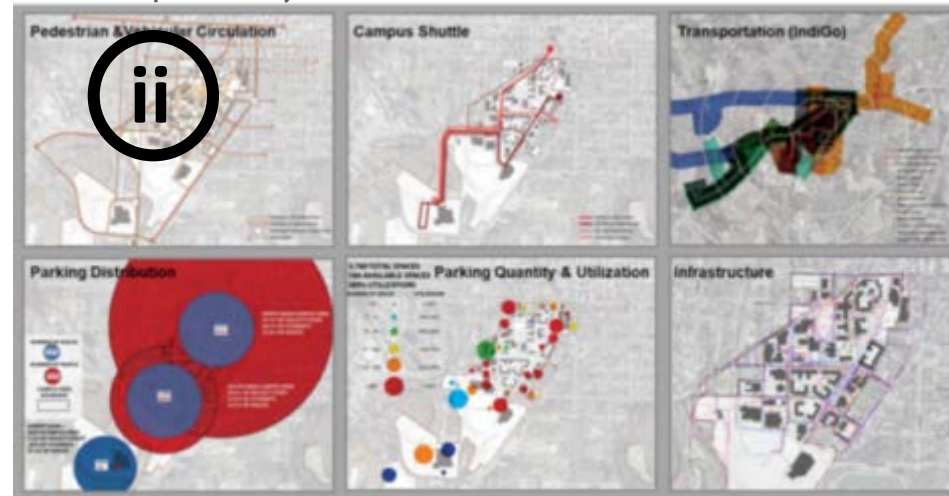


Master Planning Process

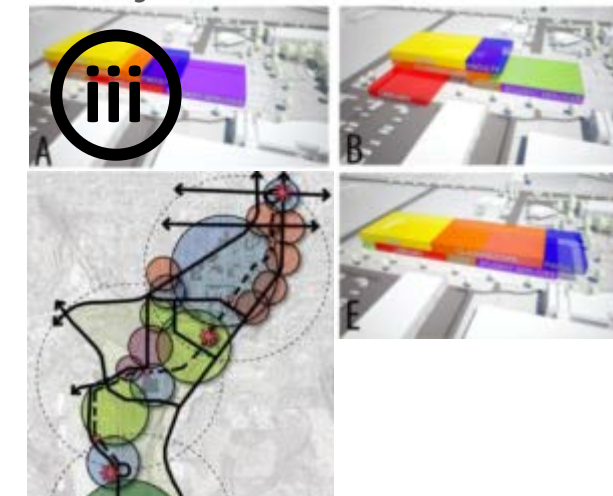
Validate Initiatives



Cross Discipline Analysis



Visioning



Updated Plan



Identify Priorities



Phasing and Cost Modeling

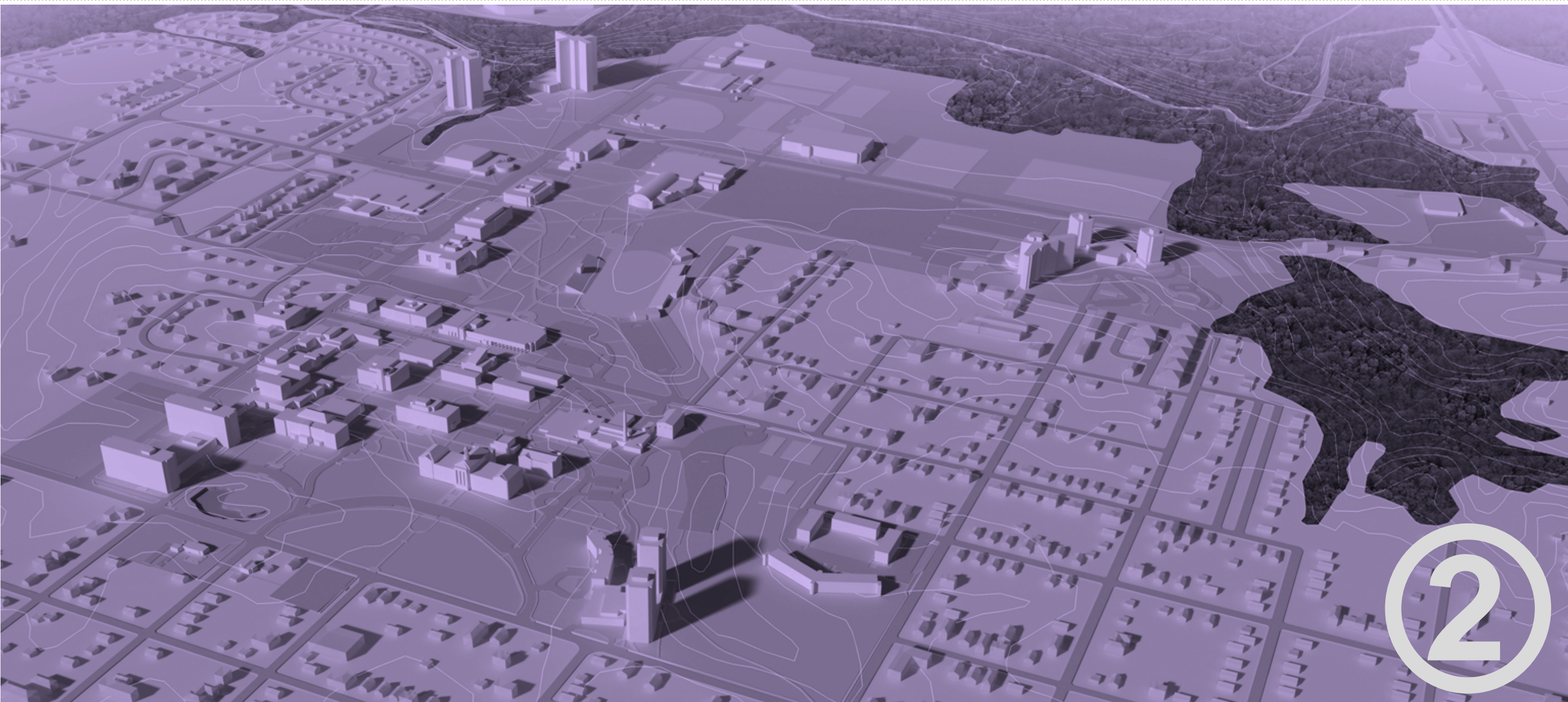
Project	Program Space	Class & Lab	Other Acad. Space	Support Space	Aux. Space	Total
A Renovate Memorial Field House				SP	SP	SP
B Renovate Johnson Hall as Safety Science	1,141	1,141				4,086
C Wayne Ave. Parking Phase II						4,736
D Renovate Folger Dining, New Entry to Crimson Event Center	3,853	3,853				13,566
E Replace Davis Hall and Demolish Foster	8,443	8,443				14,059
F Demolish Davis Hall						
G Demolish Ackman Hall						
H Encher Building Repurpose for Storage/Archives					5,200	5,200
I Renovate Stright Hall					1,400	1,400
J Renovate Zink Hall						
K Renovate Spruils Hall						
L Design and Build University Multi-cultural Center						
M Pierce Replacement Adjacent to						
Total	64,413	2,576	6,720			91,209

Classroom + Lab Space	Existing GSF	Proposed GSF
CNSV Tech	36,073	40,845
ENMC	7,604	25,362
Reading	0	522
Architect	2,406	3,227
Call	1,046	942
Mechanical Design	3,720	4,424
Biological Tech		38,679

Documentation - Implementation



Reactions to Alternatives



Diverse Perspectives

- Campus Open Forums at University Union
- Community Open Forums at City Hall
- Student Open Forums
 - Thompson Dining Hall
 - Lincoln-Washington Dining Hall
 - University Union
- Council on Campus Planning and Usage
- Executive Committee
- Governance Groups
- President's Leadership Team
- Steering Committee
- Focus Groups:
 - Representatives from Admissions
 - Representatives from GoWest
 - Representatives from Housing & Dining
 - Representatives from Landscape Maintenance
 - Representatives from Parking Services
 - Representatives from Public Safety
 - Representatives from the Registrar



Guiding Principles

- 1 Enliven the Academic Environment.
- 2 Enhance the Student Experience.
- 3 Strengthen Campus Identity.
- 4 Engage the Strategic Enrollment Plan.
- 5 Develop Visionary, yet Implementable Strategies.

2007 Master Plan

What Moves Forward:

- A** Relocation of Utility Plant
- B** Basketball Arena
- C** Science Expansion
- D** New Horrabin
- E** Library Addition / Tech Center
- F** West Hanson Field Renovation
- G** Performing Arts Center
- H** New University Village



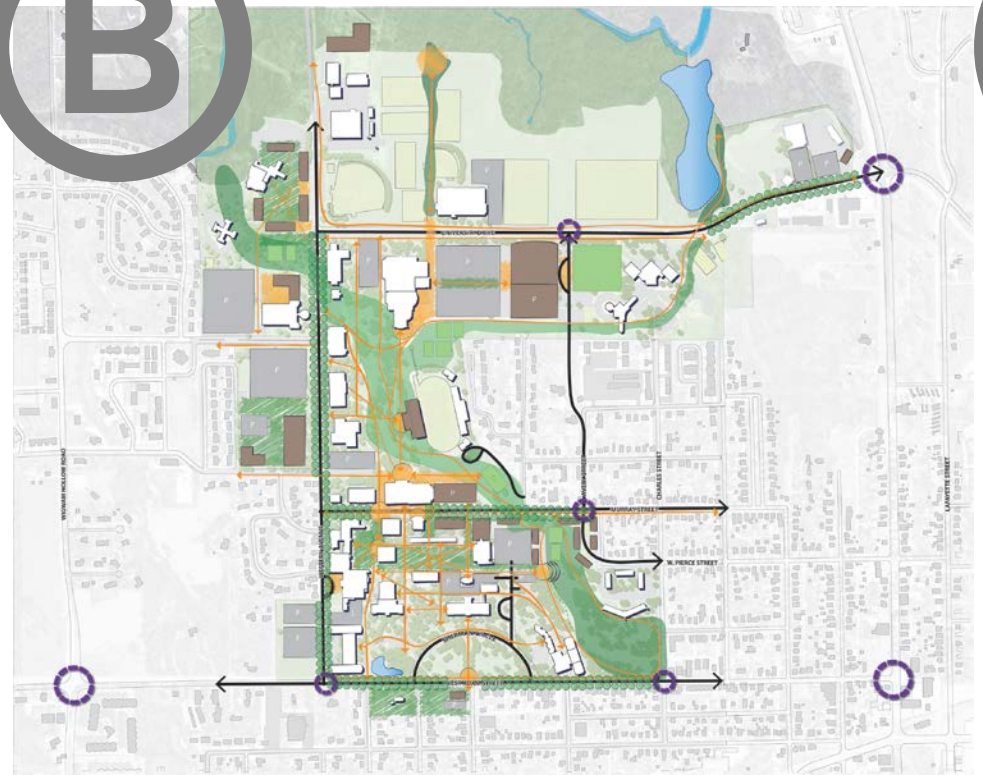
Alternative Ideas

Ideas + Principles + Framework = Alternatives

A



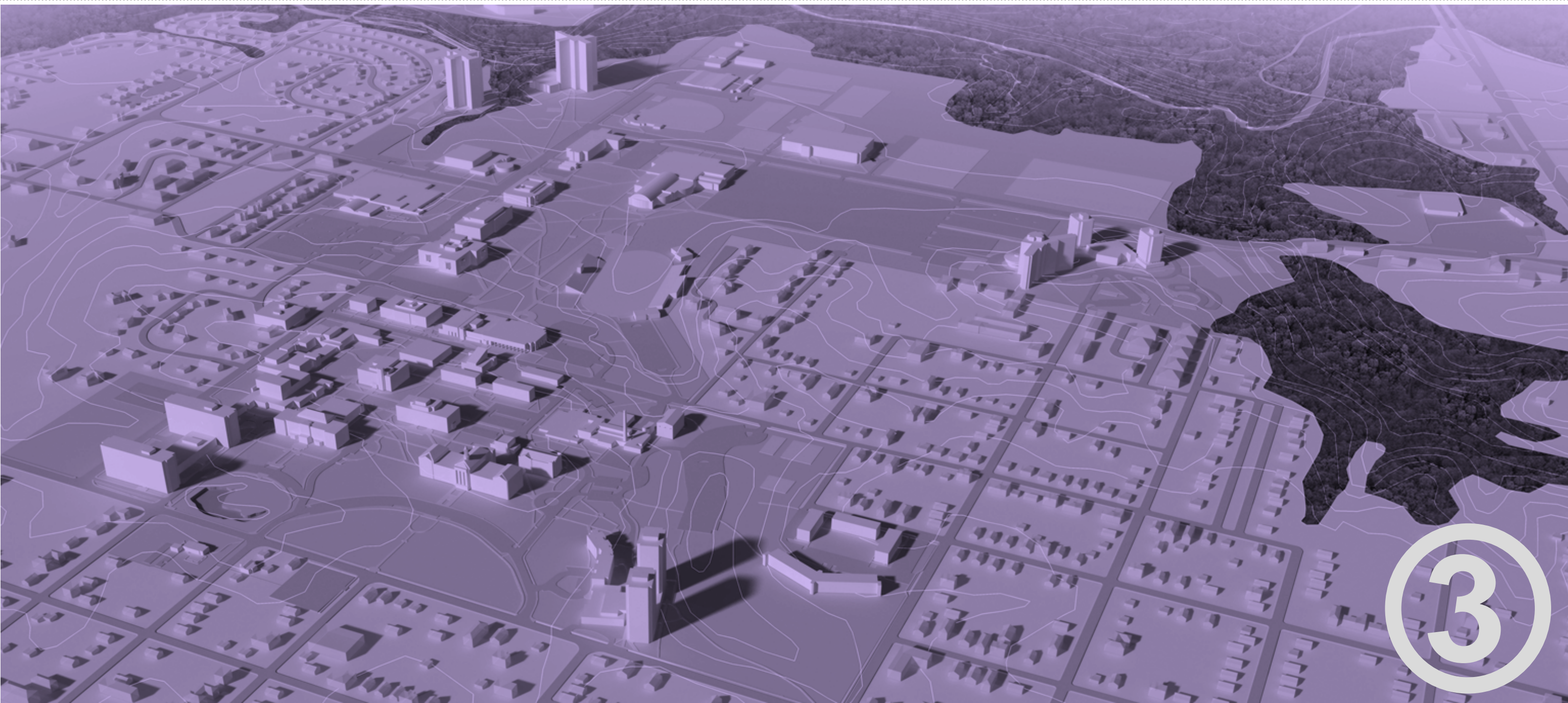
B



C



Preliminary Campus Master Plan



Introduction

Preliminary Campus Master Plan

- Best elements of the campus alternatives combined into a single vision
- Review by Neighborhood
- Review by Campus Systems
 - Building Use
 - Pedestrian Circulation
 - Bike Circulation
 - Vehicular Circulation
 - Parking



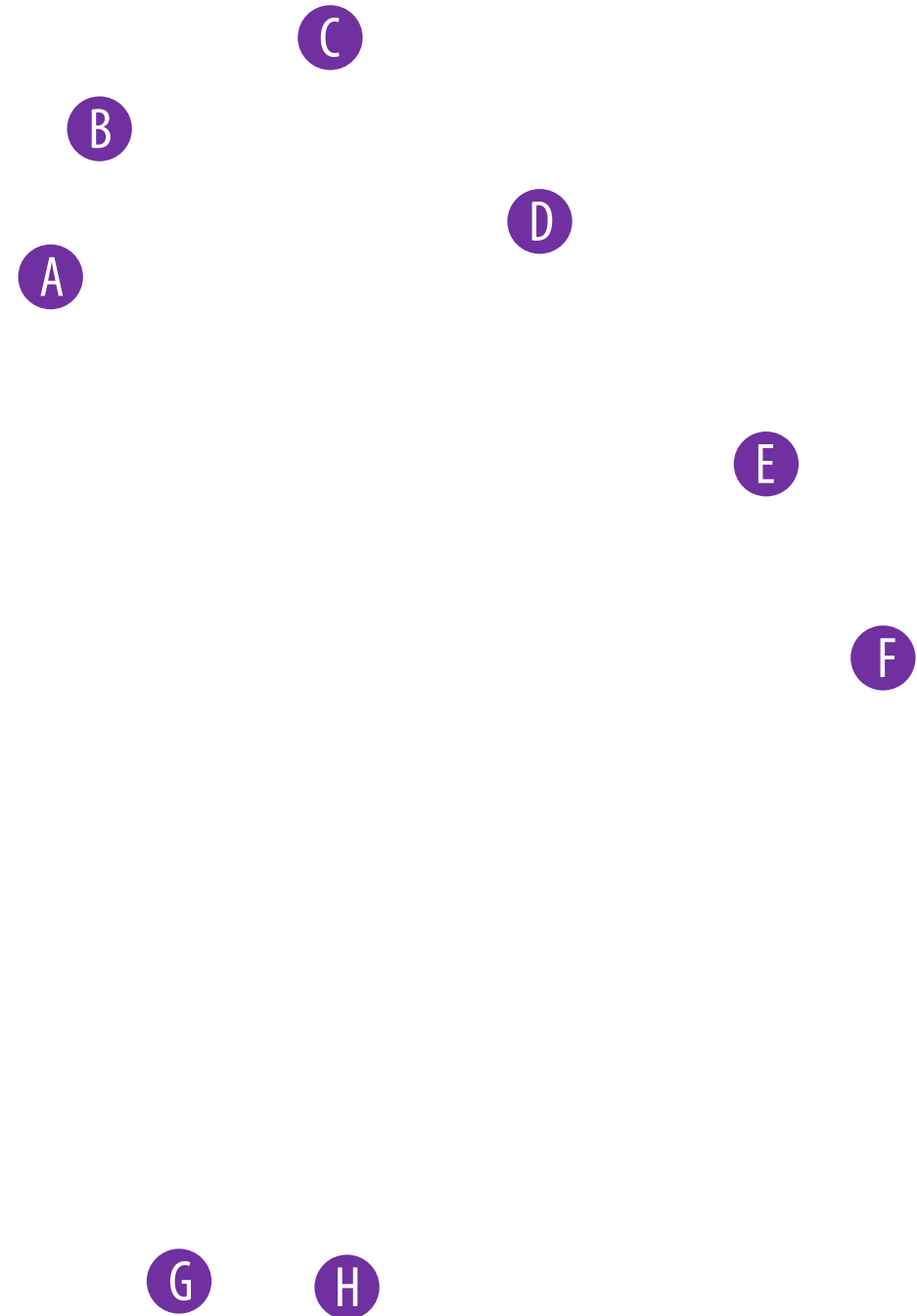
Preliminary Master Plan



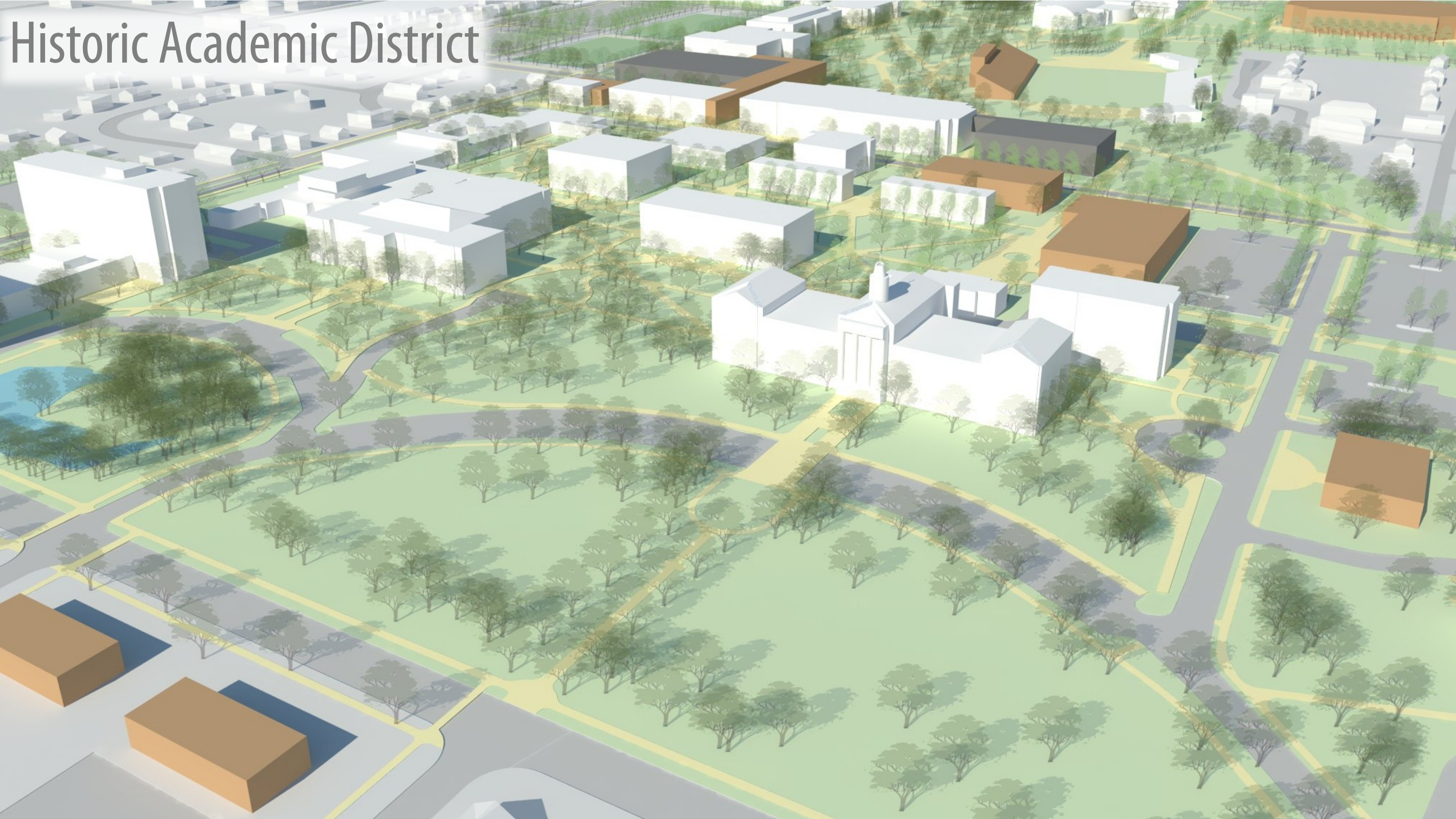
Historic Academic District

Proposed Initiatives:

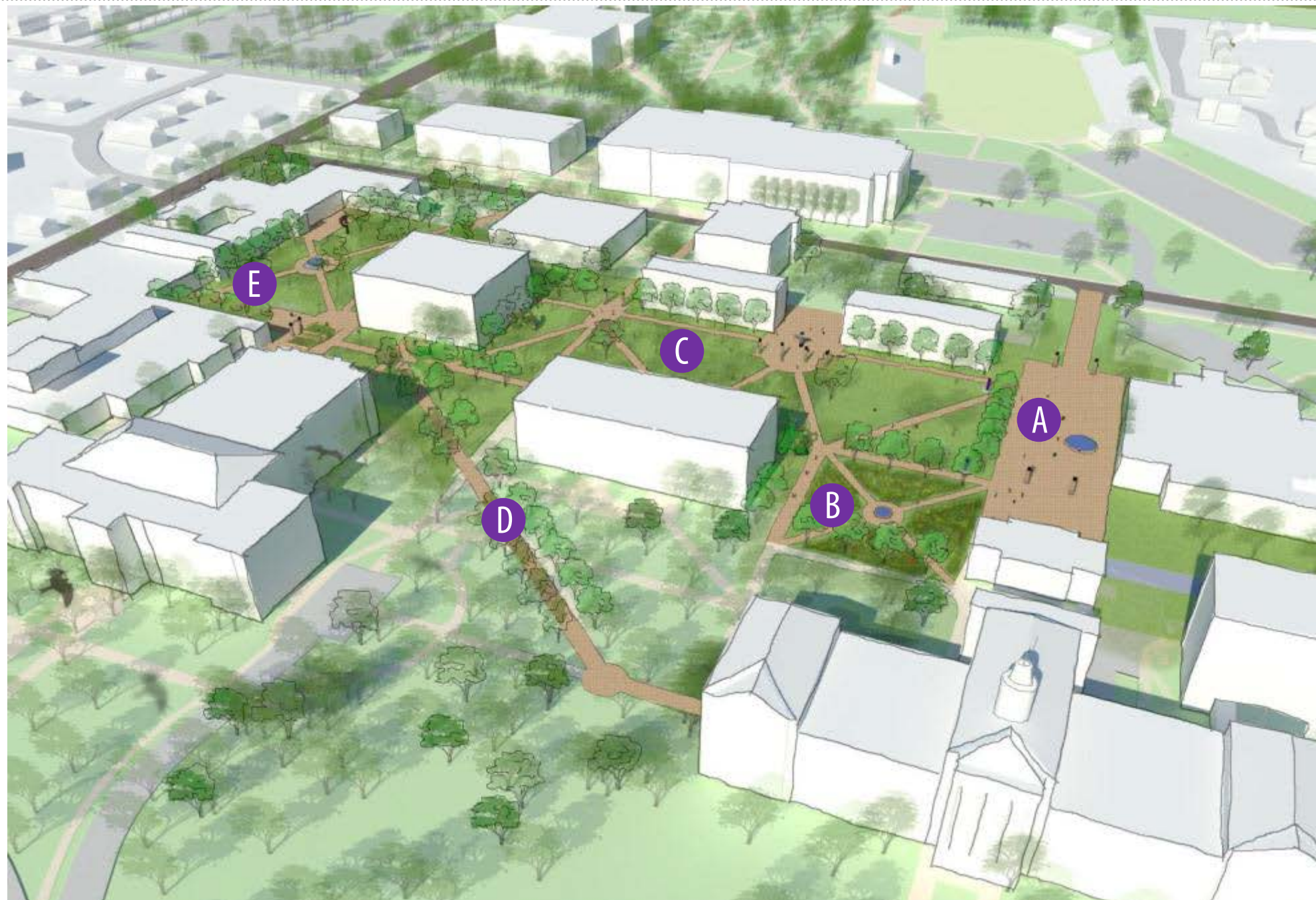
- A** Sculpture Quad
- B** International Programs
- C** Future Academic Building
- D** Visual Arts Facility
- E** Re-alignment of Memorial Drive
- F** Foundation Building & Grote Memorial
- G** Illinois Institute for Rural Affairs
- H** Institute for Environmental Sustainability



Historic Academic District



Sculpture Quad Concept



Valley Village

Proposed Initiatives:

- A** Relocation of Parking from Valley
- B** Establish “Valley of Purple”
- C** Redevelop University Village
- D** Establish Bus Stop near Lincoln
- E** Enhance W Adams St. in coordination with City of Macomb
- F** Develop Mixed-Use Overlay Zoning District with city of Macomb

A

B

C

D

E

F

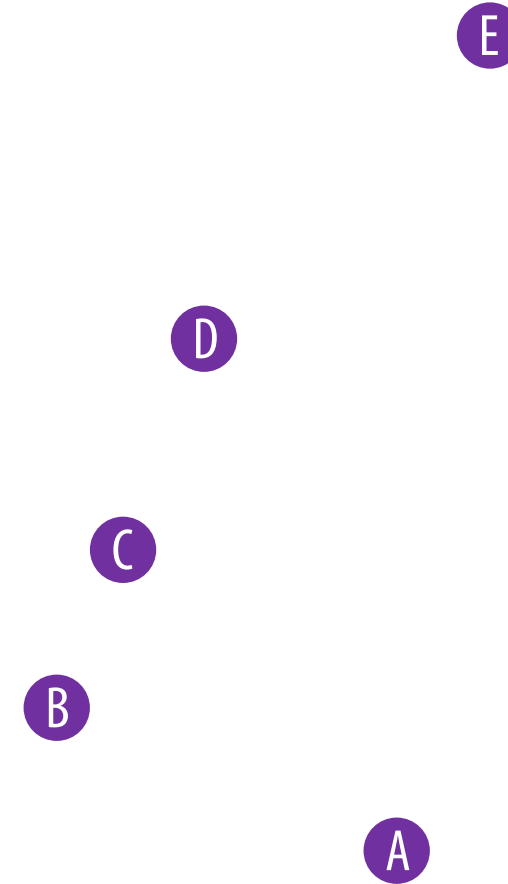
Valley Village



South Academic District

Proposed Initiatives:

- A** Bus Stop at Corbin-Olson
- B** Surface Lot to Replace Brown Hall Lot (122 Spaces)
- C** Bus Stop to Serve Performing Arts / Corbin-Olson
- D** Western Avenue Streetscape Enhancement
- E** Performing Arts Center Courtyard



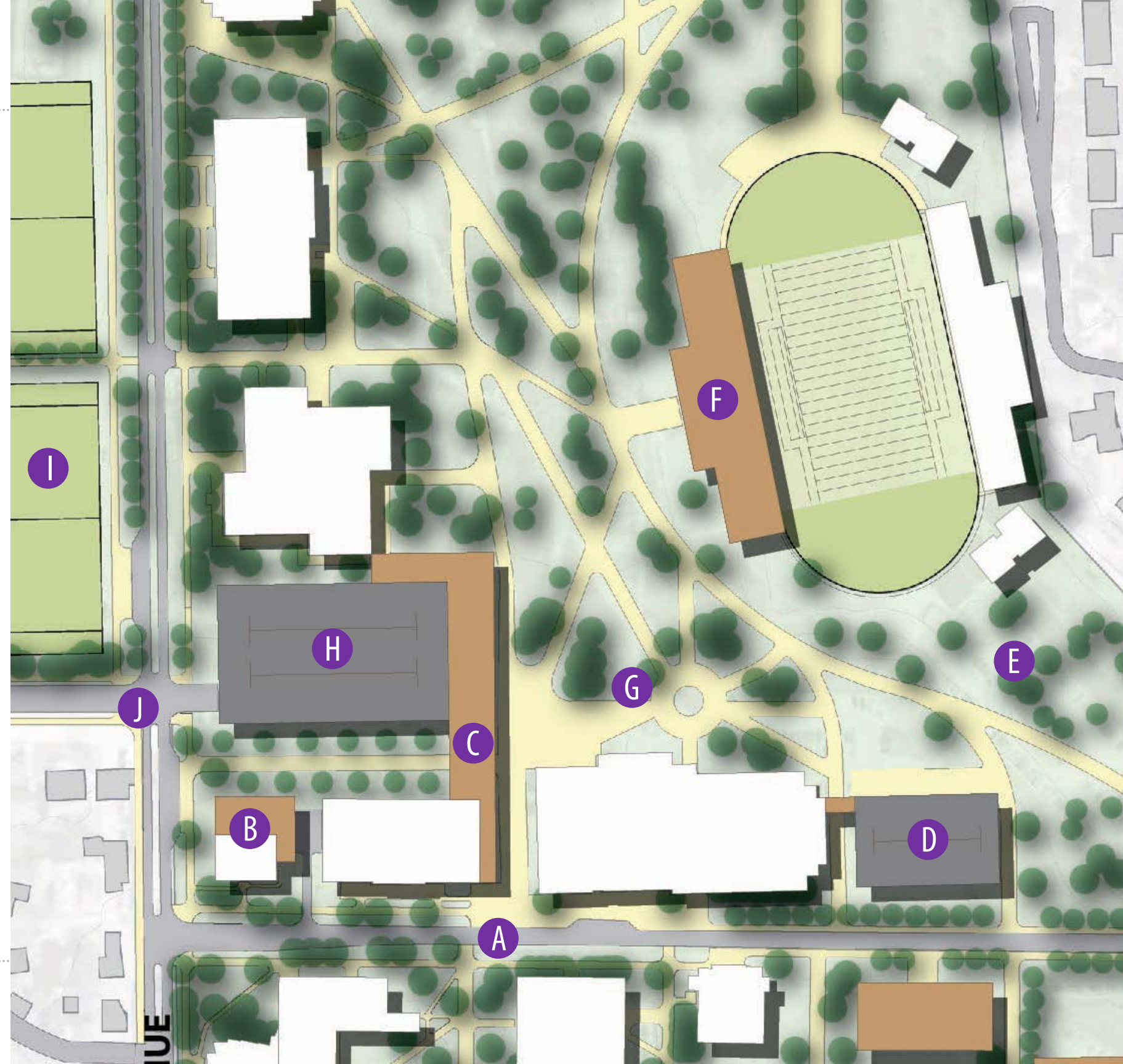
South Academic District



Intellectual Commons

Proposed Initiatives:

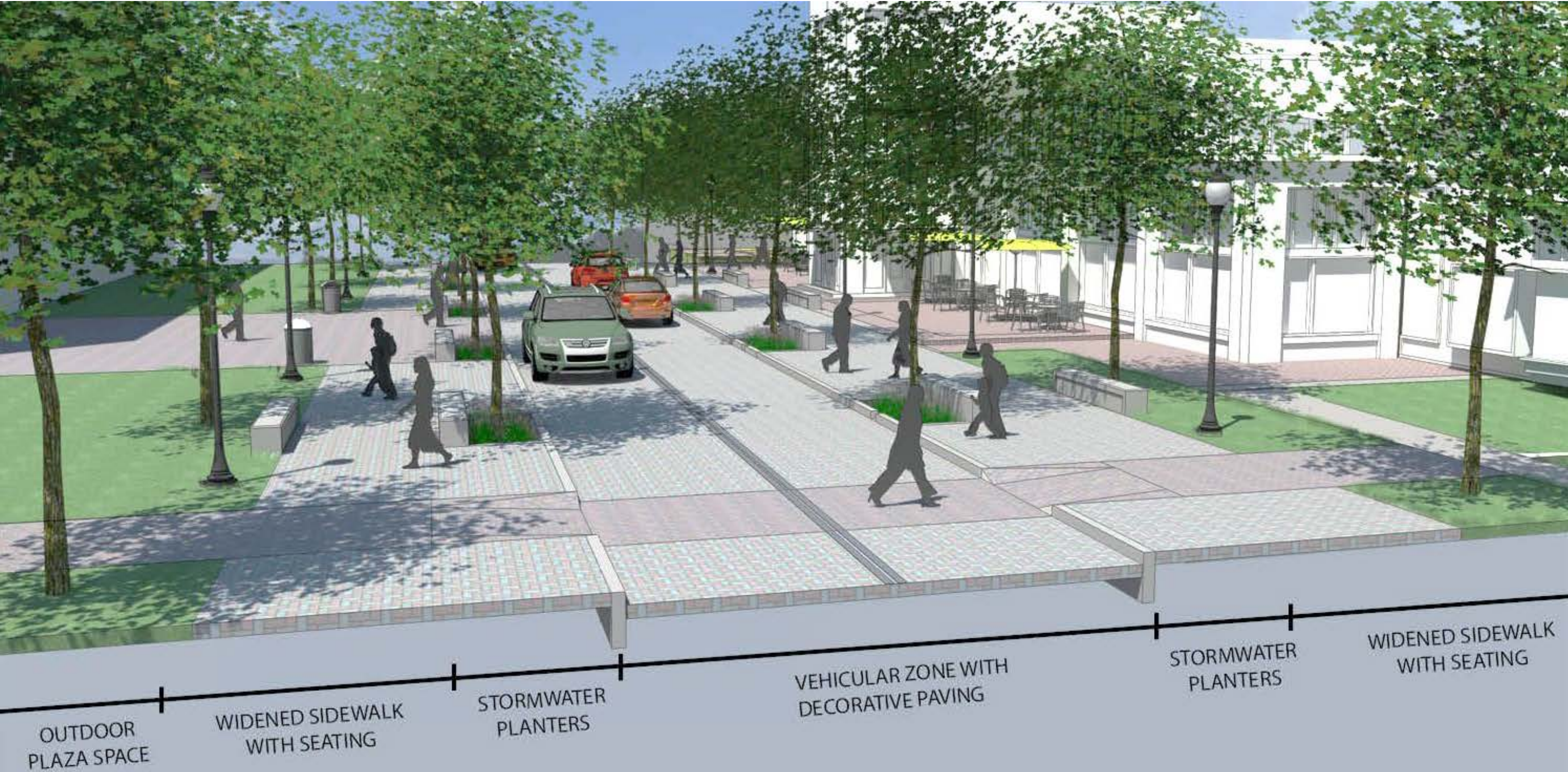
- A** Murray Streetscape Enhancement
- B** Beu Health Expansion
- C** Overhead Connection to PAC
- D** Parking Structure B (280 Spaces)
- E** Establish "Valley of Purple"
- F** West Hanson Field Redevelopment
- G** Union Plaza Enhancement
- H** Parking Structure A (800 Spaces)
- I** Intramural Recreation Fields
- J** Bus Stops for Central Campus



Intellectual Commons



Murray Street



OUTDOOR
PLAZA SPACE

WIDENED SIDEWALK
WITH SEATING

STORMWATER
PLANTERS

VEHICULAR ZONE WITH
DECORATIVE PAVING

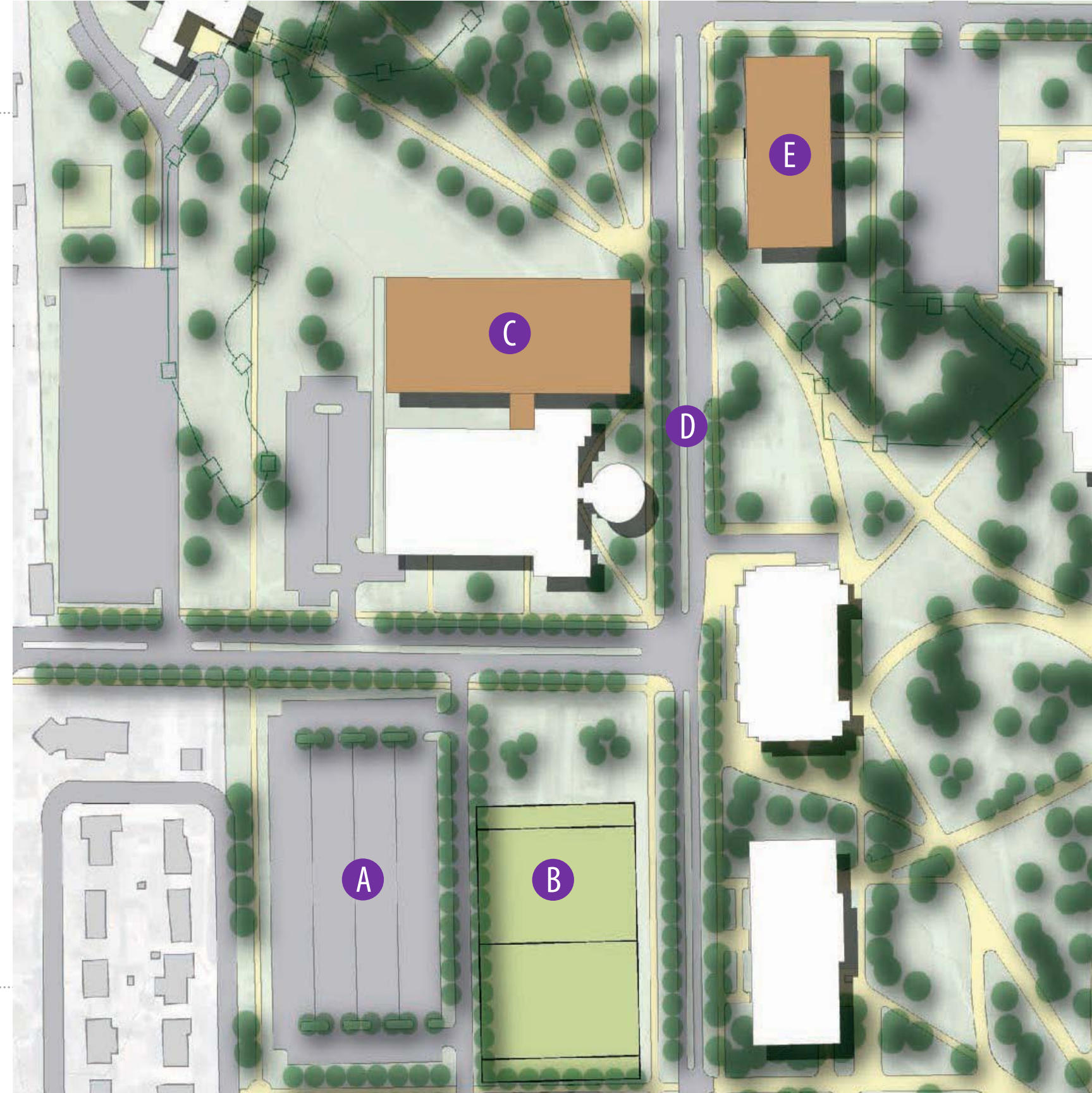
STORMWATER
PLANTERS

WIDENED SIDEWALK
WITH SEATING

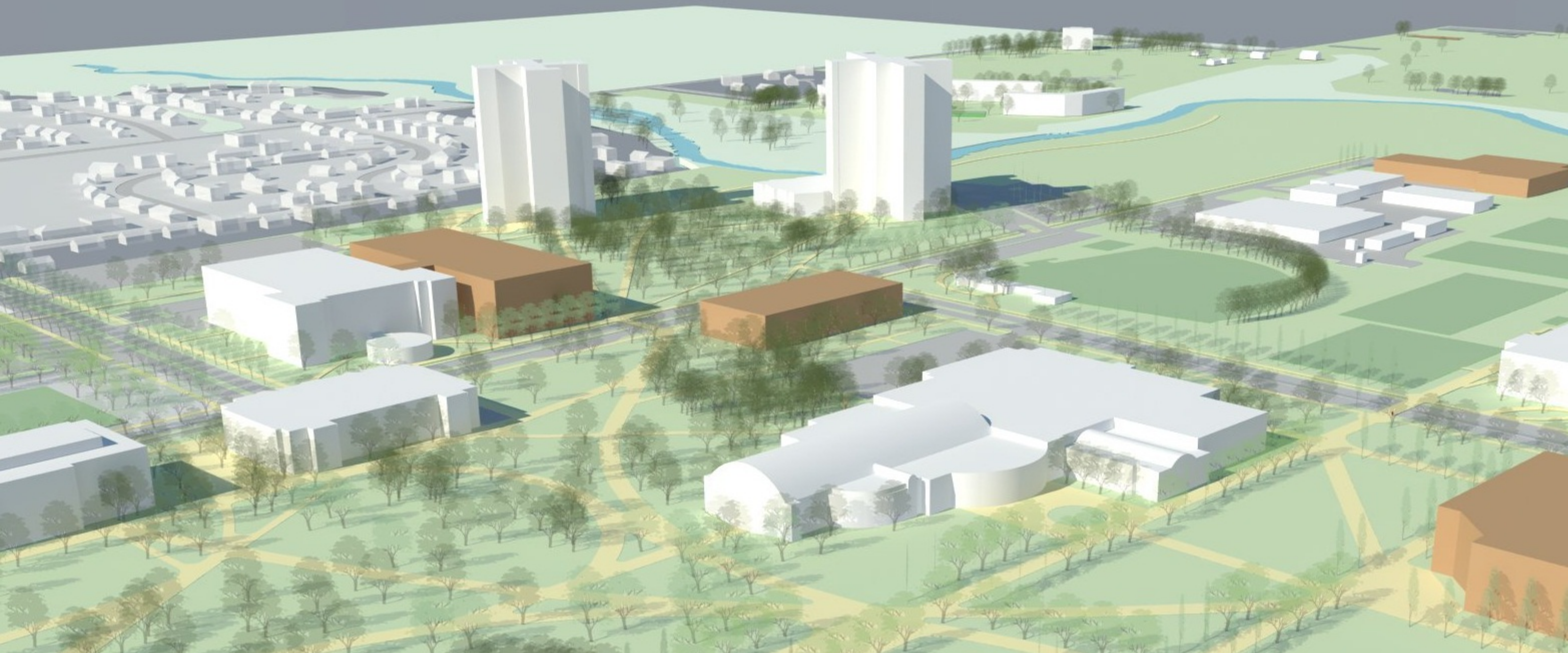
North Academic District

Proposed Initiatives:

- A** Relocated Parking (621 Spaces)
- B** Intramural Recreation Fields
- C** Currens Renovation & Expansion
- D** Western Avenue Streetscape Enhancement
- E** New Education Building



North Academic District



West Village



University Drive & Western Avenue (North)



ENHANCED
BUS STOPS

WIDENED
SIDEWALK
OFFSET FROM
ROADWAY

DEDICATED
BUS PULL-OFF

TWO 11' VEHICULAR
TRAFFIC LANES

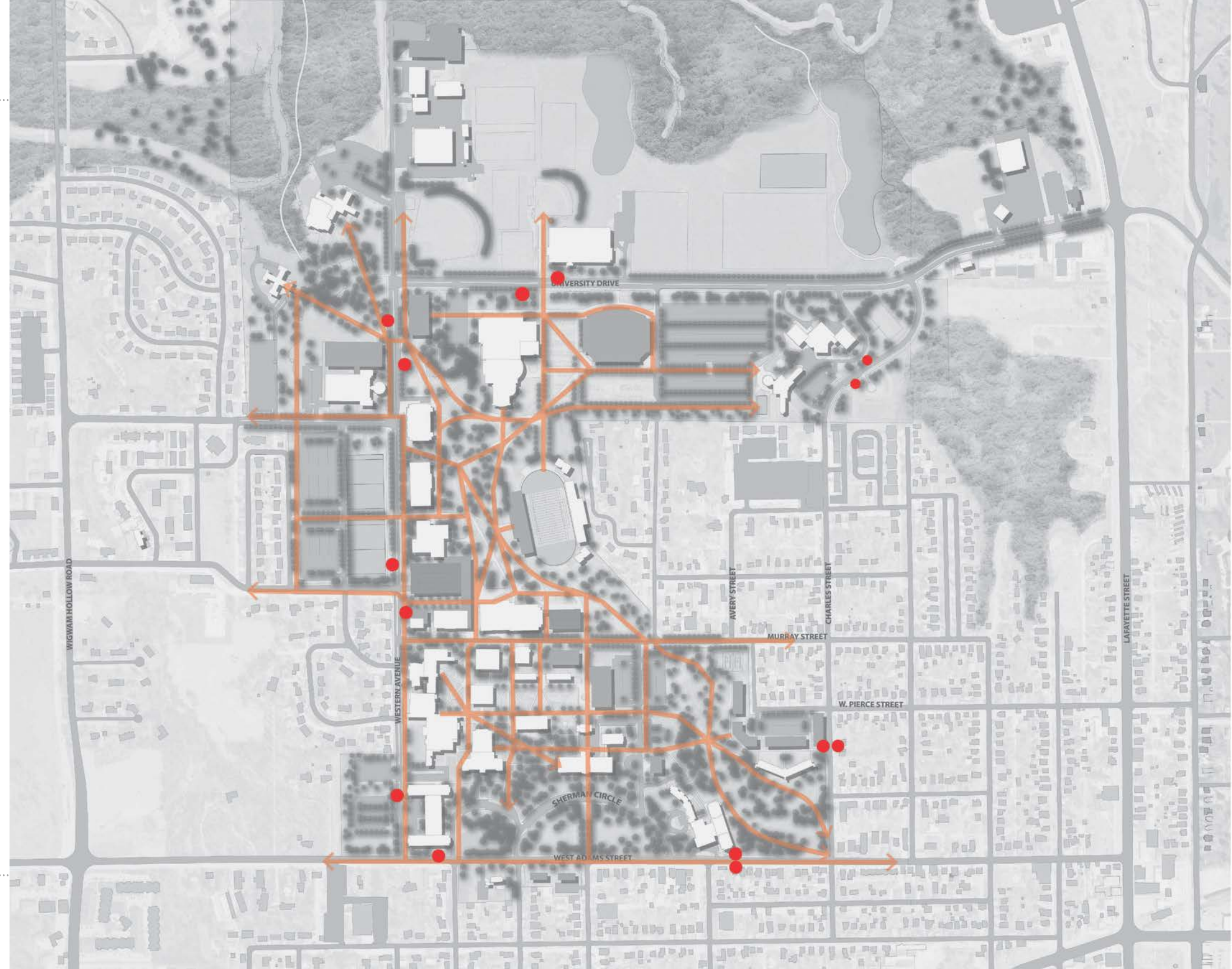
TWO 5' BIKE LANES/
BOULEVARD WITH
DECORATIVE
FENCING AND
LANDSCAPING

TWO 11' VEHICULAR
TRAFFIC LANES

Western Avenue (South)



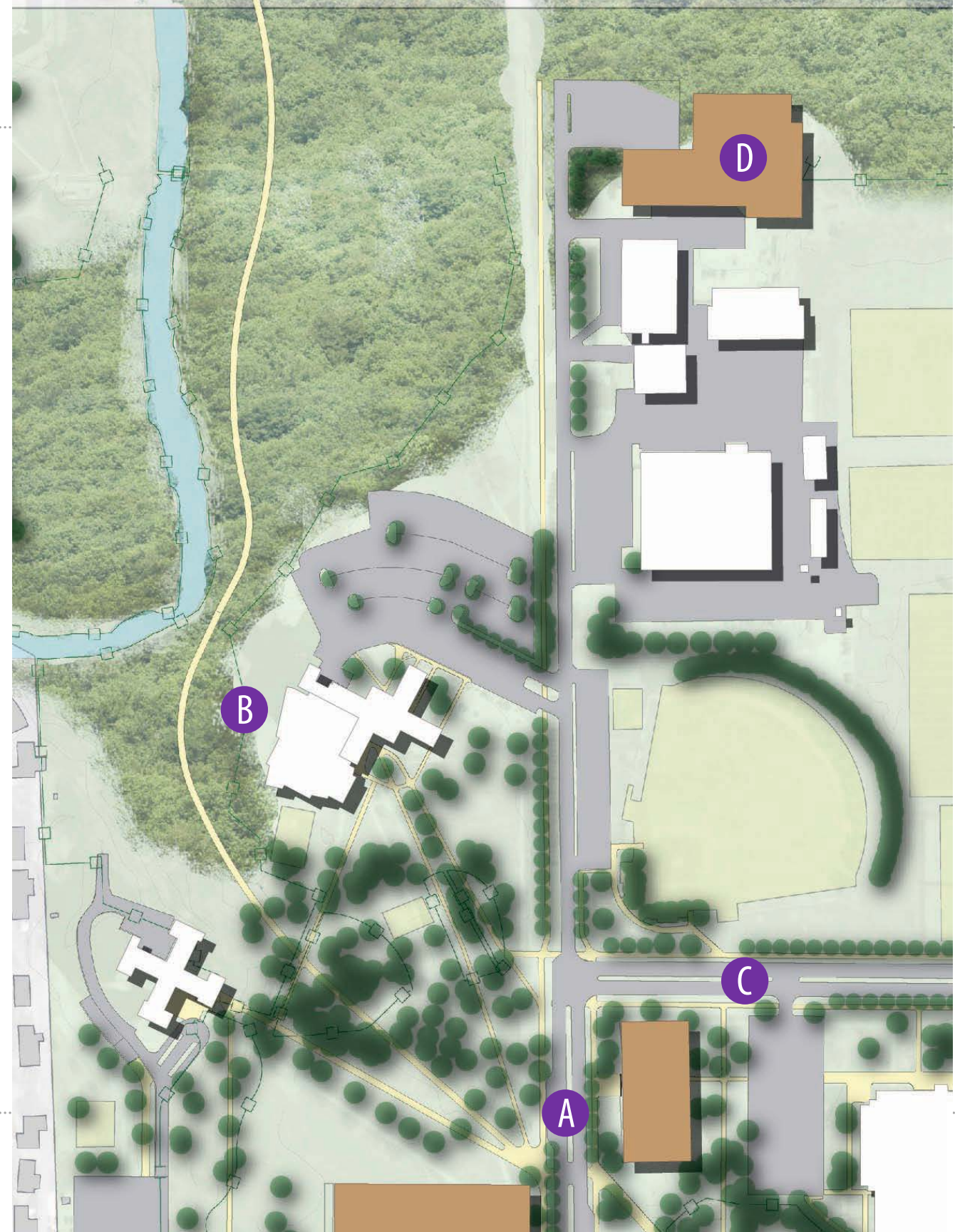
Bus Stop Locations



West Village

Proposed Initiatives:

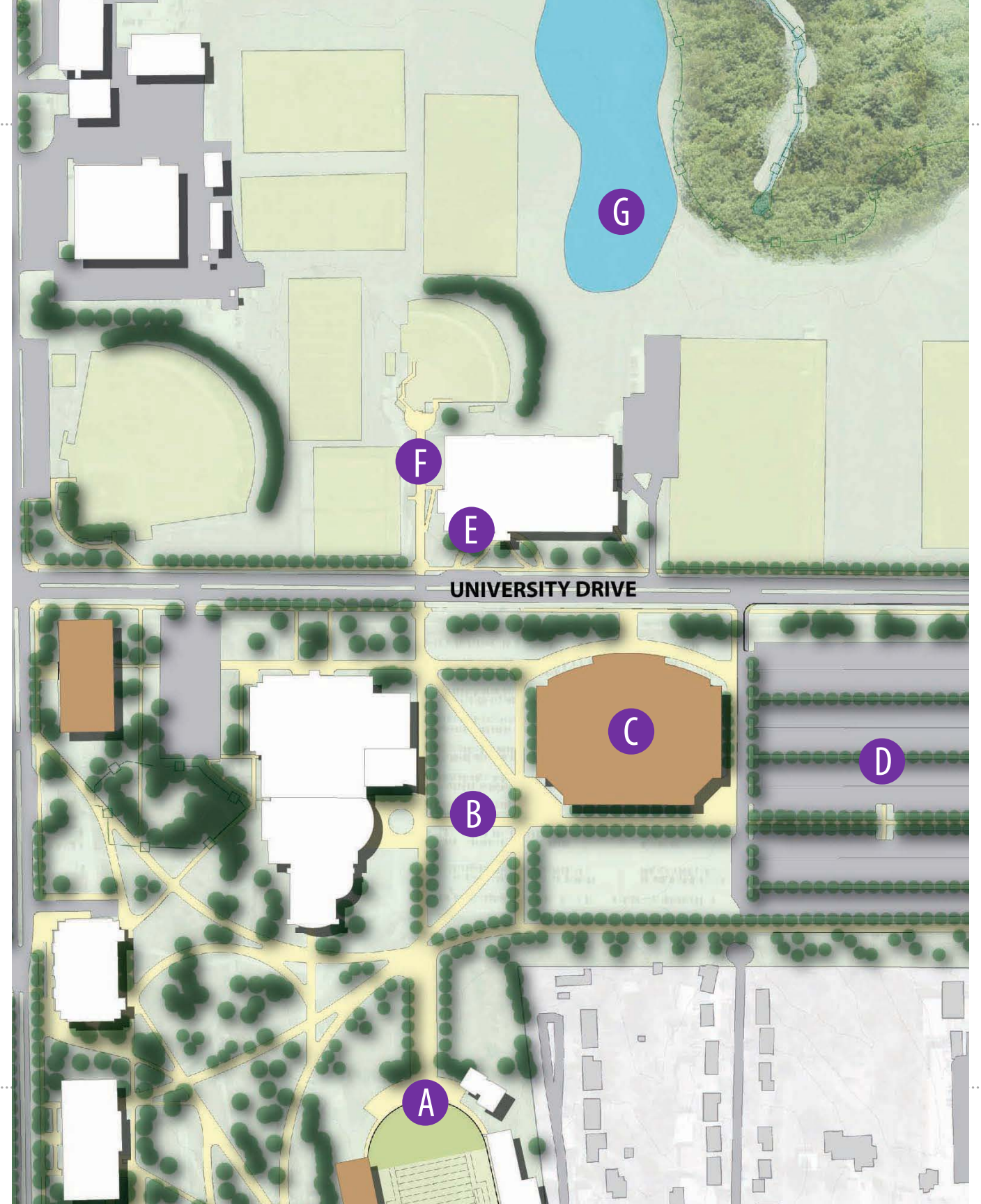
- A** Bus Stops for Higgins / Thompson
- B** Connection to La Moine Bike Trail
- C** University Drive Streetscape Enhancement
- D** Heating Plant



Athletics & Recreation

Proposed Initiatives:

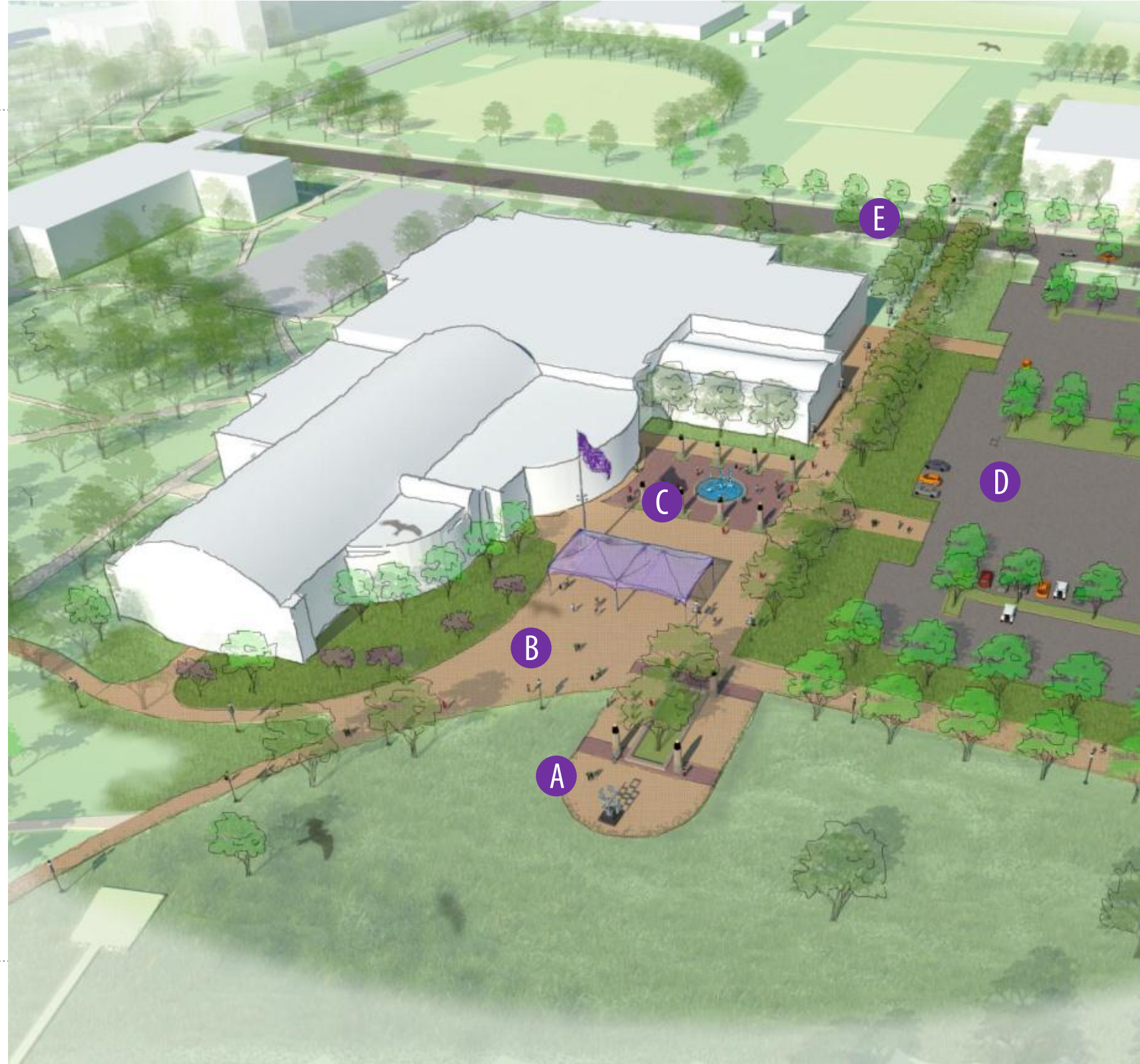
- A** Hanson Field Varsity Plaza
- B** Varsity Quad
- C** Arena
- D** Enhanced Q Lot (1191 Spaces)
- E** Bus Stops for Athletic District
- F** Varsity Walk
- G** Stormwater Catchment Basin



Athletics & Recreation



Varsity Plaza Concept



East Village

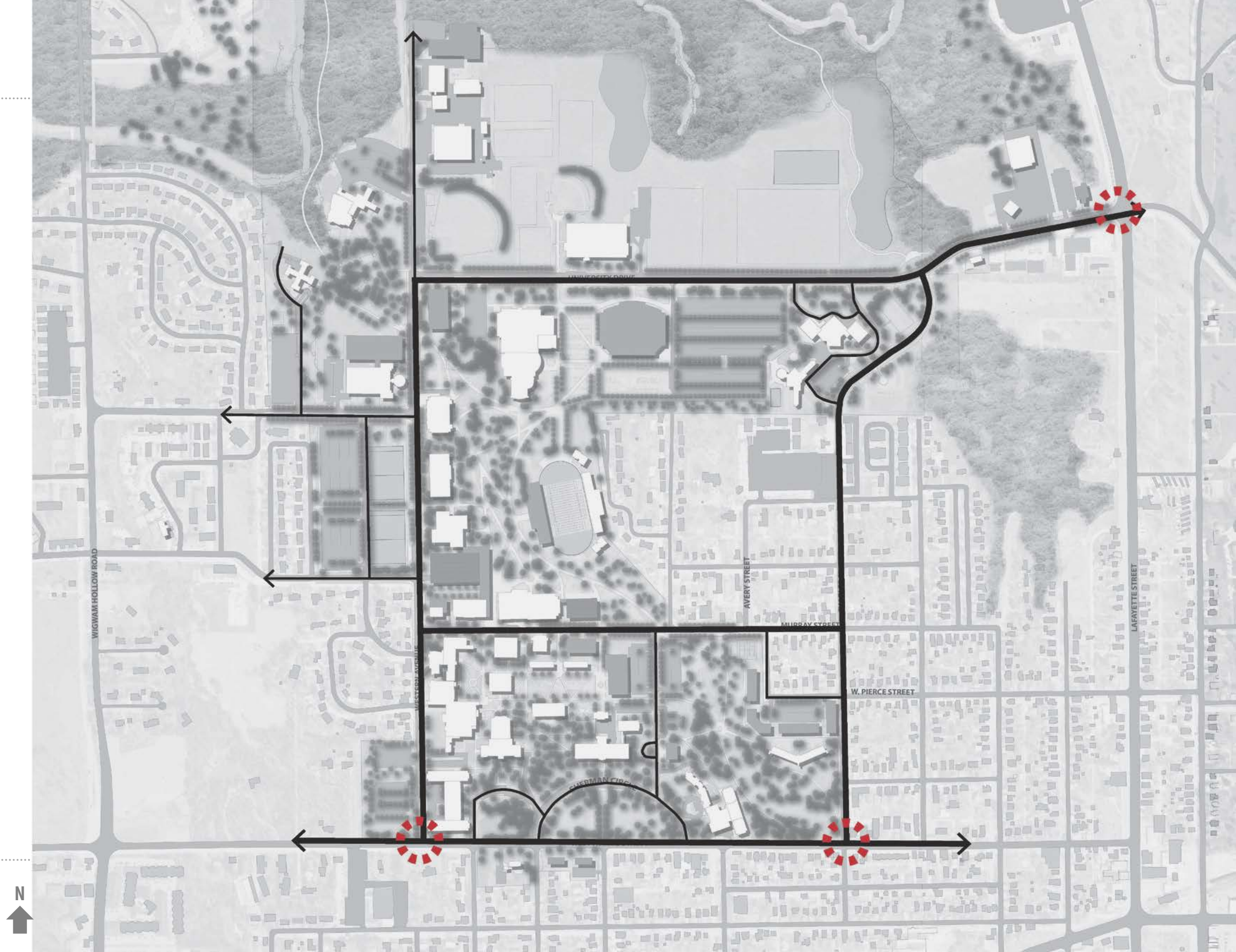
Proposed Initiatives:

- A** Enhanced Connection Thru Q Lot
- B** Bus Stops for North Quads
- C** Charles Street Enhanced Connection
- D** Stormwater Catchment Basin
- E** Connection to La Moine Bike Trail
- F** Visitors Center & Gateway



Campus Systems

- Building Use
- Pedestrian Circulation
- Bike Circulation
- **Vehicular Circulation**
- Parking



East Village



Visitors Center



VIEW FROM NORTH CAMPUS GATEWAY

Visitors Center



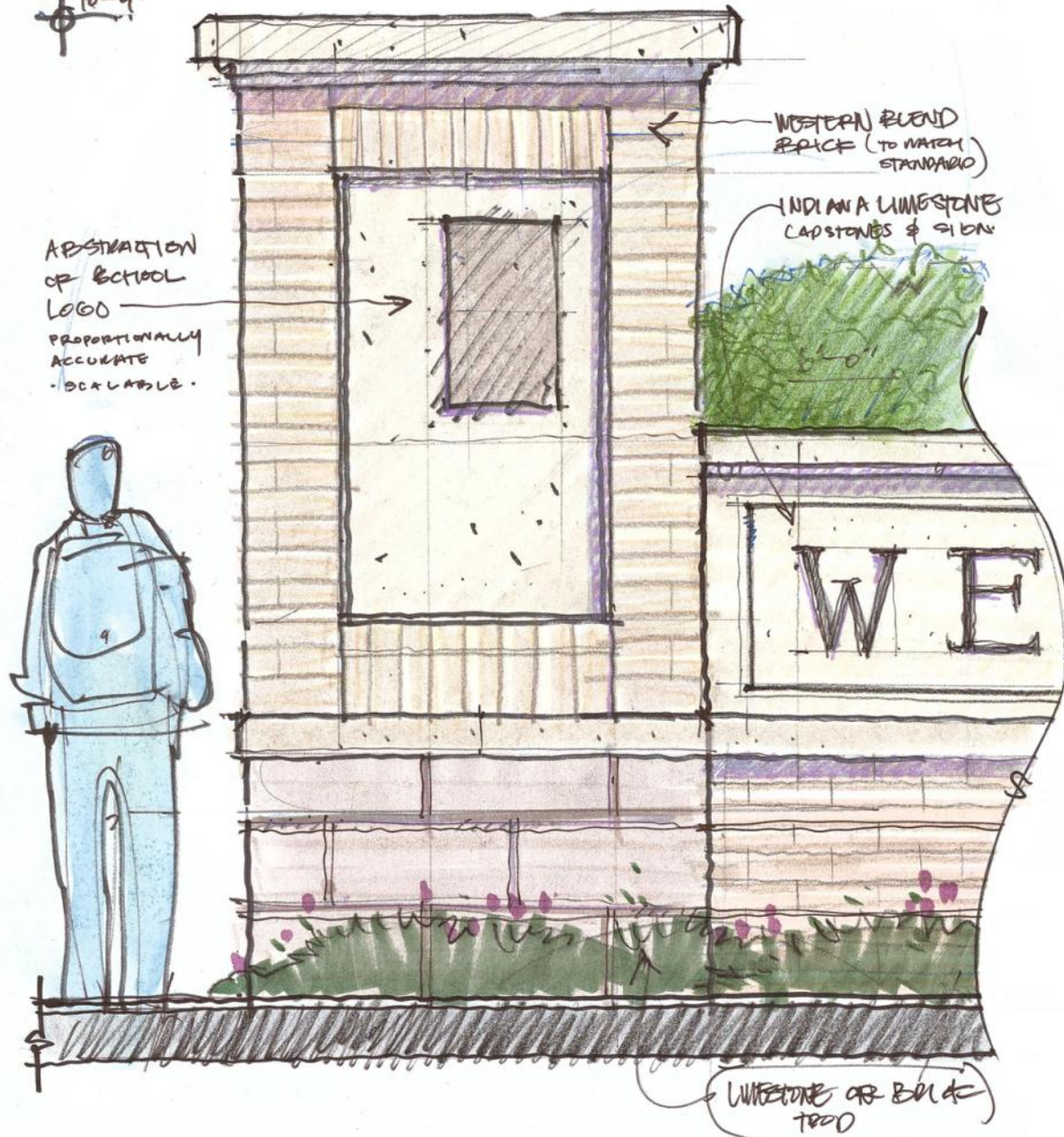
University Gateway Standard

CAMPUS GATEWAY & LANDSCAPE IMPROVEMENTS

WESTERN ILLINOIS UNIVERSITY

SMITH GROUP JR

SEPT. 10. 2012



ABSTRACTION
OF SCHOOL
LOGO
PROPORTIONALLY
ACCURATE
-SCALABLE-

WESTERN BLEND
BRICK (TO MATCH
STANDARD)

INDIANA LIMESTONE
CAPSTONES & SIDING

WE

LIMESTONE OR BOLD
TROD

University Gateway - Concept A

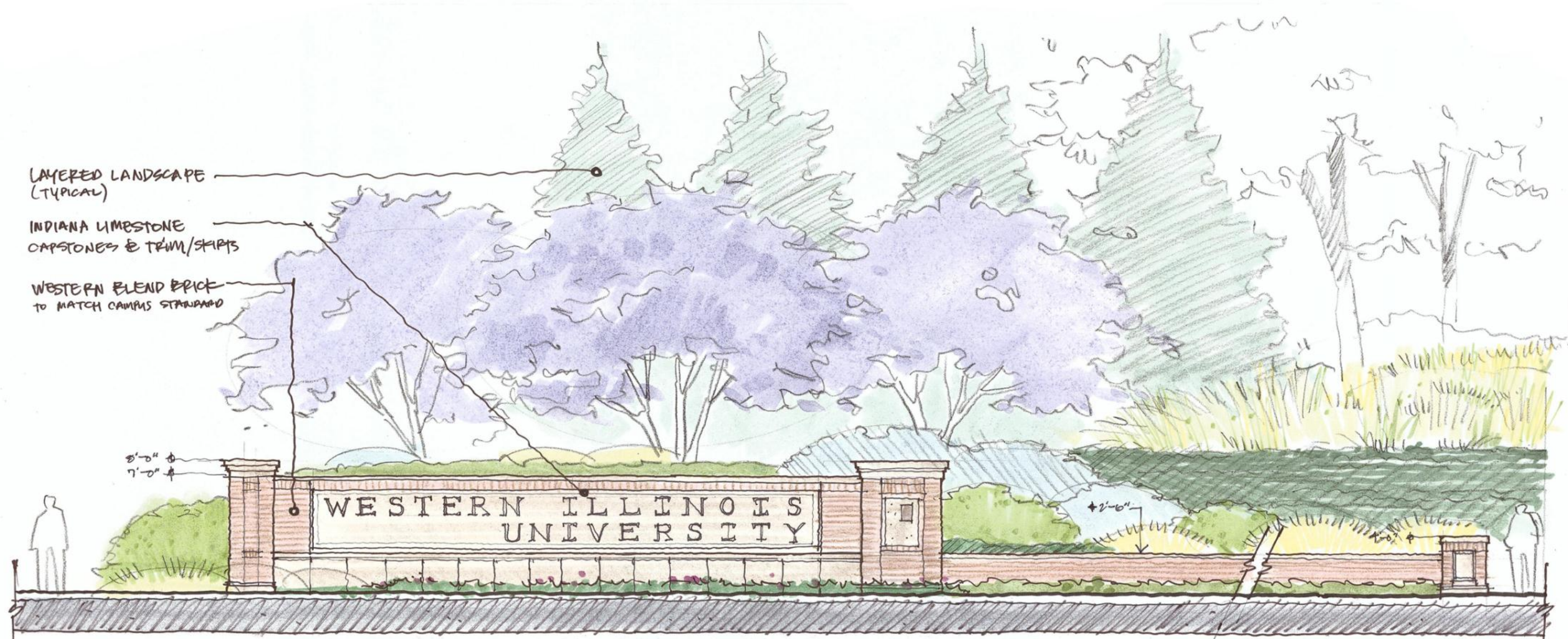


ENTRY FEATURE - OPTION 1
ELEVATION

CAMPUS GATEWAY & LANDSCAPE IMPROVEMENTS
WESTERN ILLINOIS UNIVERSITY
SMITHGROUPJJR
SEPT. 10.2012

0' 4' 12' 24'

University Gateway - Concept B



LAYERED LANDSCAPE
(TYPICAL)

INDIANA LIMESTONE
CAPSTONES & TRIM/SKIRTS

WESTERN BLEND BRICK
TO MATCH CAMPUS STANDARD

8'-0" #
7'-0" #

WESTERN ILLINOIS
UNIVERSITY

+2'-0"

ENTRY FEATURE - OPTION 2
ELEVATION

CAMPUS GATEWAY & LANDSCAPE IMPROVEMENTS

WESTERN ILLINOIS UNIVERSITY

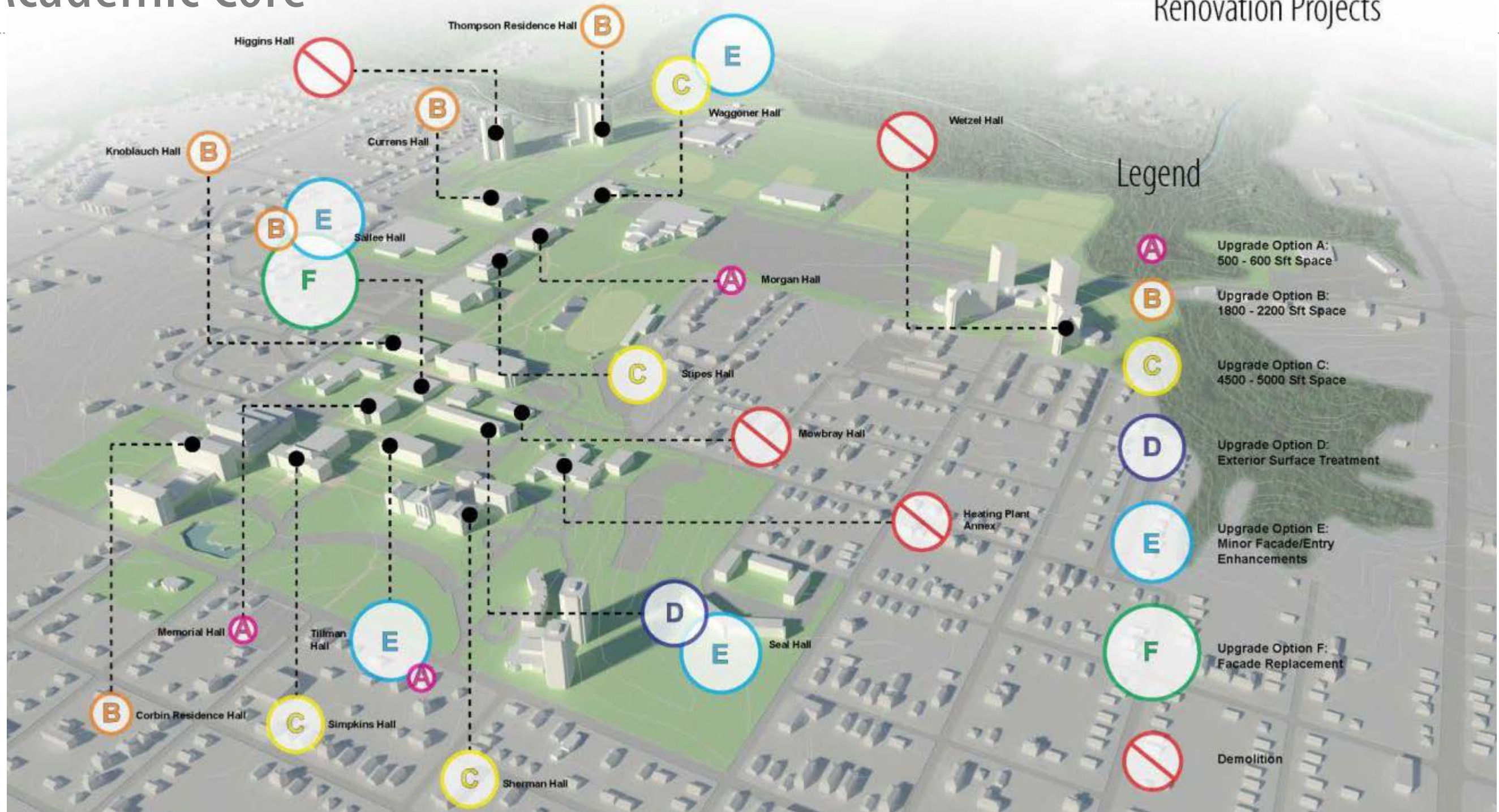
SMITHGROUP

SEPT. 10. 2012



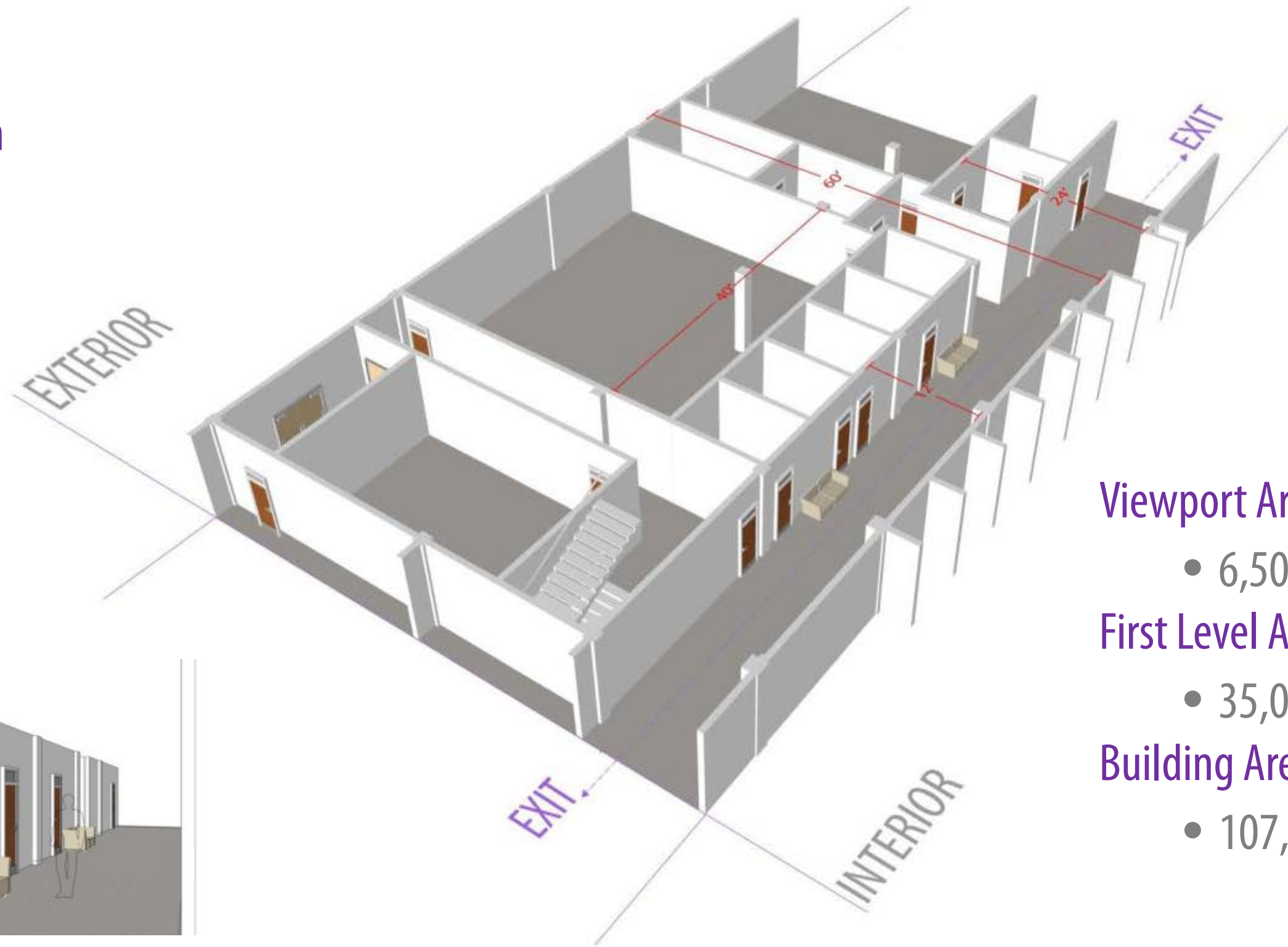
The Academic Core

Incremental Options for Interior and Exterior Renovation Projects



Case Study

Current Condition



Viewport Area:

- 6,500 sqft*

First Level Area:

- 35,000 sqft*

Building Area:

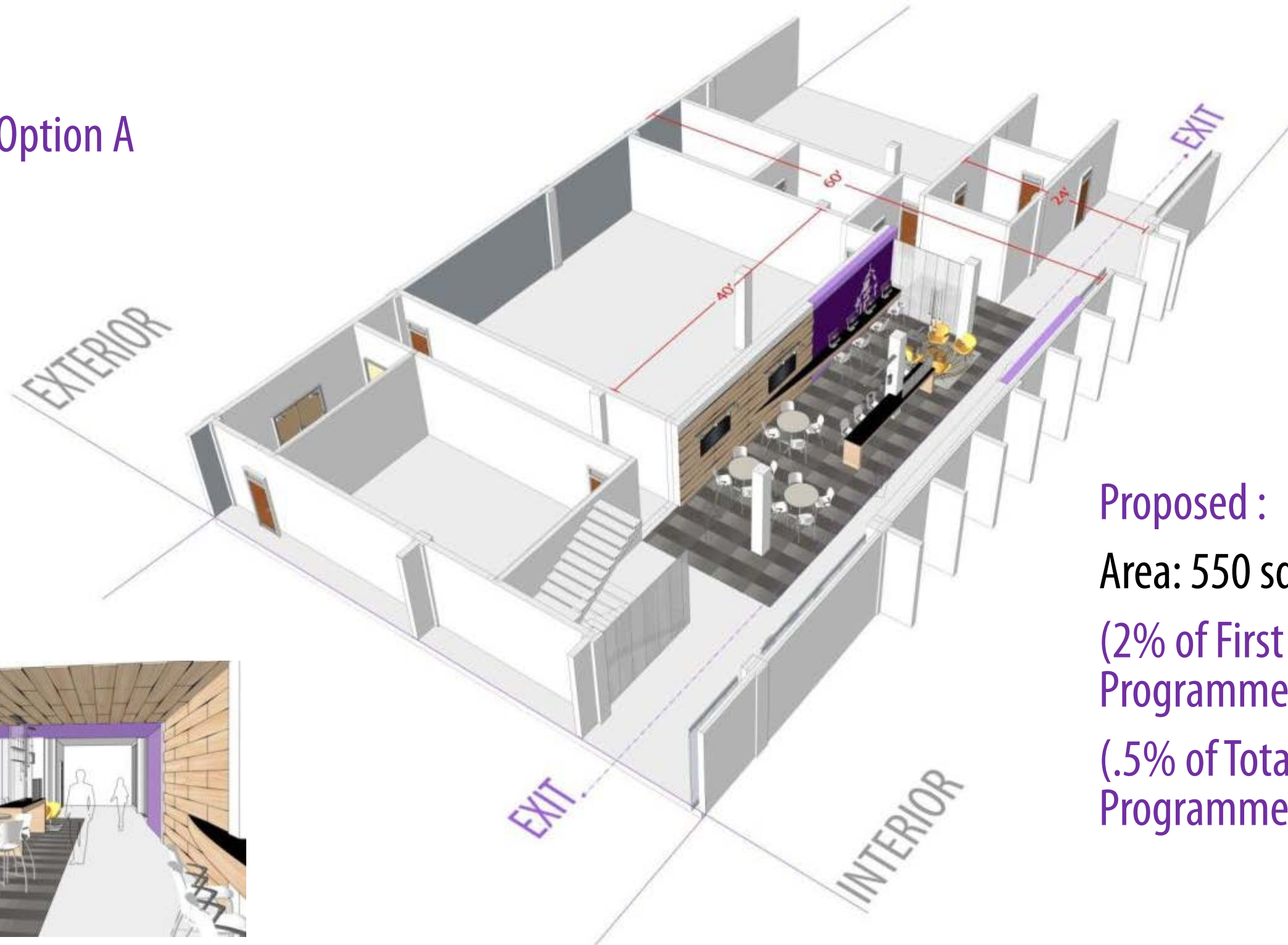
- 107,000 sqft*

*Appx.



Case Study

Interior Upgrade Option A



Proposed :

Area: 550 sqft*

(2% of First Level
Programmed Area)

(.5% of Total Building
Programmed Area)

**Appx.*



Case Study

Interior Upgrade Option A



Case Study

Interior Upgrade Option B



Proposed :

Area: 2,200 sqft*

(7% of First Level
Programmed Area)

(2% of Total Building
Programmed Area)

**Appx.*



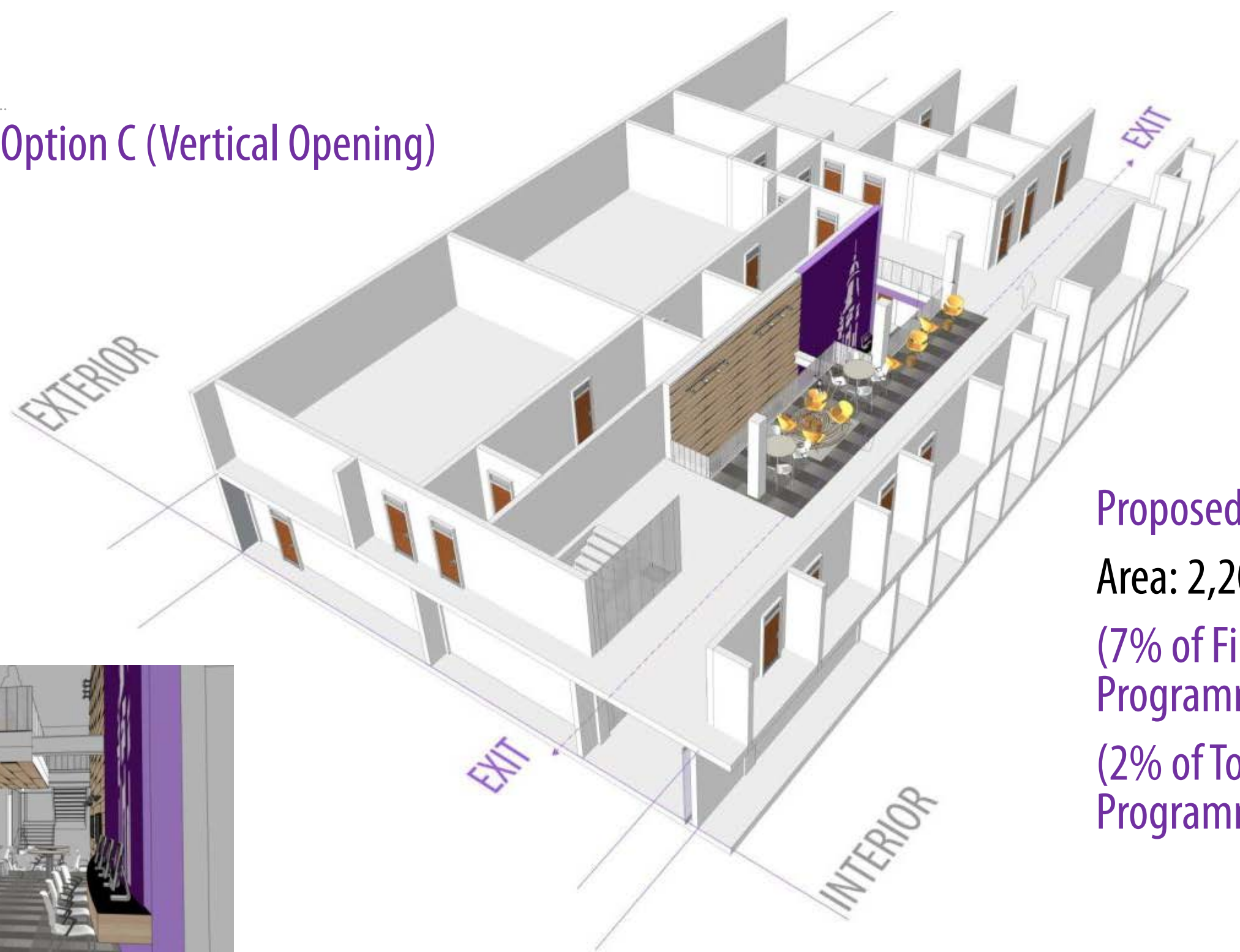
Case Study

Interior Upgrade Option B



Case Study

Interior Upgrade Option C (Vertical Opening)



Proposed :

Area: 2,200 sqft* + Opening

(7% of First Level
Programmed Area)

(2% of Total Building
Programmed Area)

**Appx.*



Case Study

Interior Upgrade Option C (Vertical Opening)



Next Steps

