



Fiscal Year 2011
Master Plan Update

Seven Planning Principles

1. Learner Centered Campus
2. Linkages Between Campus Areas
3. Aesthetically Pleasing Appearance
4. Accommodating Growth
5. Strong Utility and Technology Infrastructure
6. Community Interface
7. Flexibility

1: Learner Centered Campus

*Supports new and remodeled academic facilities.
These facilities and supporting technologies reinforce
institutional values of academic excellence and
educational opportunity.*

Memorial Hall



- Career Services
- Communication
- Communication Science Disorders
- Counseling Center
- Disability Resource Center
- University Advising and Academic Services Center
- University Technology (lab)
- University Television
- Western's English as a Second Language Institute

Memorial Hall

Features



- New:
 - Elevator
 - Common areas on all floors
 - Faculty and staff offices
 - Electronic classrooms
 - Network
 - uTech Lab
 - VOIP phones

Memorial Hall: Counseling Center (2009)



Memorial Hall: Counseling Center (2010)



Elevator Core (2009)



Elevator Completion (2010)



2nd Floor (2009)



2nd Floor (2010)



Electronic Classroom (2010)



Move In Schedule

Unit	Dates
University Technology Lab	November 19-26
University Television	December 1-5
Career Services	December 13-19
Communication Sciences Disorders	December 21-January 2
Communication	January 3-8
University Advising & Academic Services Center	January 9-12
University Counseling Center	January 13-16
Disability Resource Center	January 18-23
Western's English as a Second Language Institute	January 18-23

Staff Coordination Team

- Matt Bierman
- Paul Kreider
- Kathy Barrett
- Mark Blaylock
- Scott Coker
- Julie DeWees
- Mike Dickson
- Ken Hawkinson
- Michael Hott
- Kristi Mindrup
- Kevin Morgan
- Tere North
- Tim Rericha
- Joe Rives
- Andy Woerly

What's Next?

Who's Moving Out?	Who's Moving In?
Counseling from Sherman 1 st Floor West	Graduate School and Financial Aid
CSD from Currens 1 st Floor	School of Nursing
Comm from Simpkins 113, 2 nd Floor Sallee	College of Fine Arts and Communication
Advising from Olson	(facility taken off-line for renovation)
Counseling from Olson	(facility taken off-line for renovation)
University Television from Olson	(facility taken off-line for renovation)
University Technology from Corbin	(facility taken off-line for renovation)
Disability Resource Center from 1 st floor Seal	TBD
WESL from Seal 2 nd Floor East	TBD



- Phase I – WIU-QC Riverfront Campus
December 2009 Highlights
 - Received funding in the Capital Bill
 - Working on Storm Water Run Off
 - Waiting on Release of Construction Funding

Groundbreaking

March 31, 2010



Groundbreaking March 31, 2010



Phase I Amenities



- 18 Classrooms
- Two Computer Laboratories
- Discipline Specific Laboratories for Engineering and Manufacturing Engineering Technology
- Faculty from COBT, all Undergraduate Programs (except C&I), University Administration and Staff

Construction

June 25, 2010



July 16, 2010



December 3, 2010



December 10, 2010



December 10, 2010

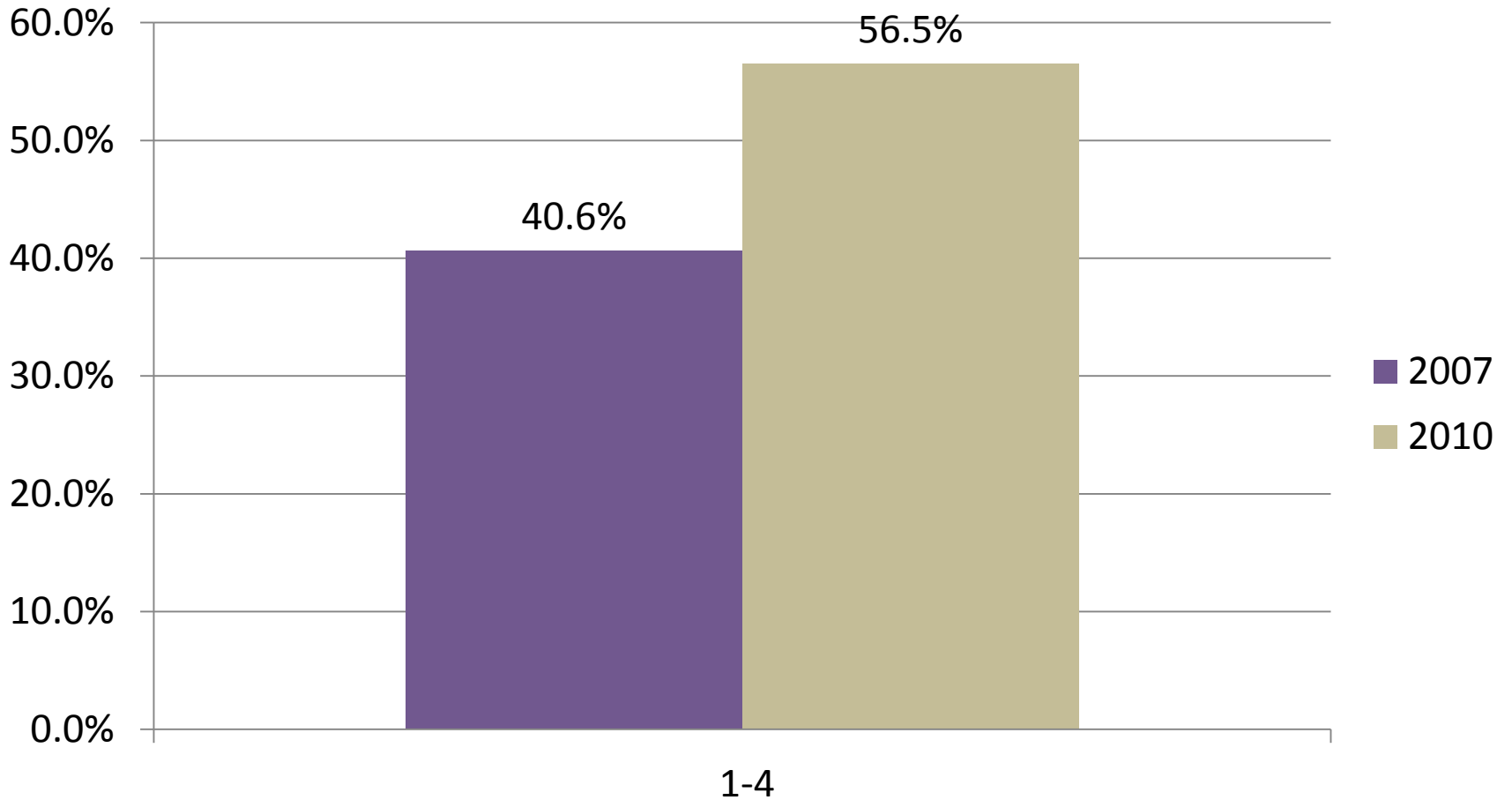


December 10, 2010



Technology

Age of Faculty Computers



Other Technology Facts



- 42 of the 127 University's general instructional electronic classrooms (33.1%) have been upgraded
- When Memorial Hall and Phase I of the Riverfront Campus opens this total will raise to 67 of 154 (43.5%)

Newest Electronic Classroom Knoblauch 305



Bandwidth

- WIU Networks
 - A 47% increase in the student computing network from 115 Mb to 165 Mb
 - A 47% increase in the administrative network from 85 Mb to 125 Mb
 - Moving ahead
 - Continue planned increases
 - Increase infrastructure
 - Improve wireless network

2: Linkages Between Campus Areas

*Accessibility Improvements, Landscape, and
Convenient Pedestrian Flow*

New Union Entry



Insert Picture of Union Entry

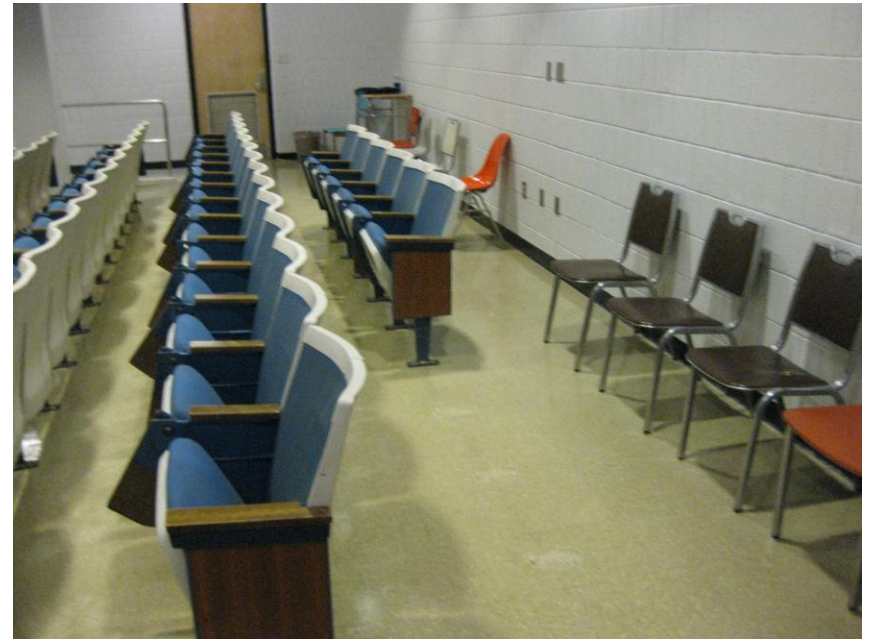


Accessibility

New Ramp Access Morgan Hall 101A and Waggoner Hall 319



Designated Wheelchair Seating in Currens, Morgan, Simpkins, and Waggoner Halls



Landscape Enhancements

Mowbray Hall



Recreation Center Addition



Landscape Enhancements

- 28 trees added; 22 removed
- Macomb We Care
 - Plantings in School Colors
 - Thompson Prairie
 - Mulching
- Quad Cities We Care
 - Plantings
 - Tulip Outline of Phase II development



Campus Connections



Campus Connections



- Rocky Bike Share
 - 180 Registered Users
 - 350 Users
- Hertz Car Share
 - 80 members
 - 1,000 hours of utilization
- Quad Cities
 - Metrolink
 - Relocation of Channel Cat

3. Aesthetically Pleasing Appearance

*New and Renovated Facilities that Reflect
Campus Pride and University Commitments to
Sustainability*

University Housing and Dining Master Plan Update

- By Summer 2011
 - Washington Hall Renovation
 - Wetzel Hall decommissioning architect selected
 - Thompson Hall architect selected to assist w/leakages and water infiltration
 - Building One at Lamoine Village Taken Off-Line
- By Summer 2012
 - Corbin-Olson Renovation
 - Lincoln Hall Renovation
 - Remainder of Lamoine Village Taken Off-Line
 - Higgins Hall Taken Off-Line after Corbin Olson is Reopened

Intercollegiate Athletics

Stan Hyman Memorial Halo at Boyer Baseball Stadium



Lee Calhoun Memorial Plaza



Western Hall Lighting Project (before)



Western Hall Lighting Project (after)



Remodeled Student-Athlete Academic Support Center (Brophy)



Target Western Forward and Comprehensive Campaign

Men's and Women's Soccer



- Press Box
- Team Benches
- Permanent Seats
- Lights

McKee Softball Stadium



- Lights
- Practice Field

Sustainability



- Lighting Grant V completes all academic buildings
- WIU-QC will be applying to make phase II Gold LEED Certified Facilities
- Members of College of Arts and Sciences and WIU-QC partnering in a NSF Grant to expand our presence at Kibbe

Nahant Marsh



- WIU-QC and EICCD Sign an Agreement
 - 513 Acre Nature Conservancy
 - Laboratory
 - Classroom
 - Computer Room
 - Classes in Arts and Sciences and Education and Human Services

Sustainability



- Reduce Paper Consumption
- Purchase Green Products
- Engage in Composting
- Support Sustainable Transportation
- Participation in Recycle Mania
 - Ranked 176th of 267
 - Joined AASHE's Sustainability Tracking Rating and Assessment System

4. Accommodating Growth

Short and Long Term Plans to add net assignable square feet to support the academic mission and service operations of Western Illinois University

Adding New Space

- Memorial Hall
 - 83,000 GSF
 - 12 classrooms (10 electronic)
- Riverfront Phase I
 - Doubles the size of the current GSF
 - 18 classrooms
 - 50 faculty/staff offices
- Performing Arts Center
 - 1,400 seat theatre
 - 250-seat thrust stage
 - 150 seat studio-theatre
- Riverfront Phase II
 - 100,000 Gross Square Feet
 - Home to CAS, COEHS, COFAC, University Administration, and WQPT

Riverfront Campus (2009)



Riverfront Campus (2010)



Central Building



Long Term Growth: FY12 Capital Recommendations

- 1A. Macomb Campus Utility Infrastructure
- 1B. QC Riverfront Campus-Phase III
- 3. Life/Safety and Accessibility Enhancements
- 4. Science Building Planning
- 5. Visual Arts Center Planning
- Capital Renewal

5. Strong Utility and Technology Infrastructure

Infrastructure Enhancements

- Board approves issuance of COPS for steamline replacement
- Air handler and roof replacement done on south quad
- Heating Plant converting from #6 to #2 fuel oil
- Cooling Tower from Wetzel was relocated to support Browne and Simpkins Halls

Picture of Steamlines



Picture of South Quad Roof



Technology

- Request made to CDB to proceed with selection for a new chiller in the University Data Center
- VOIP
 - Installed on the QC Campus
 - Being installed in Memorial Hall
 - Planned for Riverfront and Macomb Campuses
- Bandwidth
 - A 47% increase in the student computing network from 115-165 Mb.
 - A 15% increase in the administrative network from 85 Mb to 100 Mb
 - Planning for even more
- Printing Reduction/Lab of the Future Committee

6. Community Interface

Providing welcoming access to the campus and its facilities, and support of economic development in our host communities and regions

New Banner Program



Upgrade of Sherman Auditorium



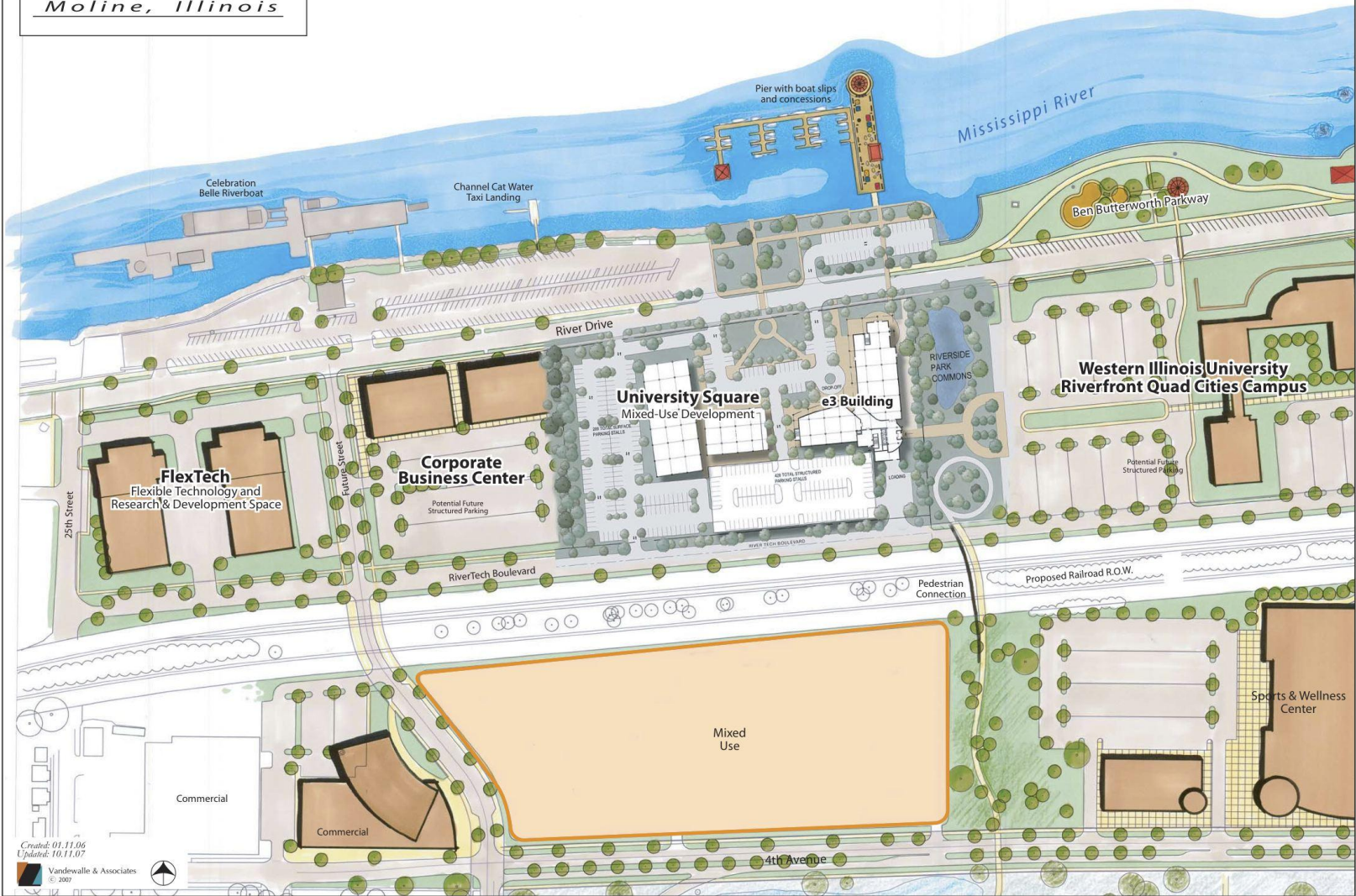
Resurfacing of University Drive



Economic Development

RiverTech

Moline, Illinois



Created: 01.11.06
Updated: 10.11.07

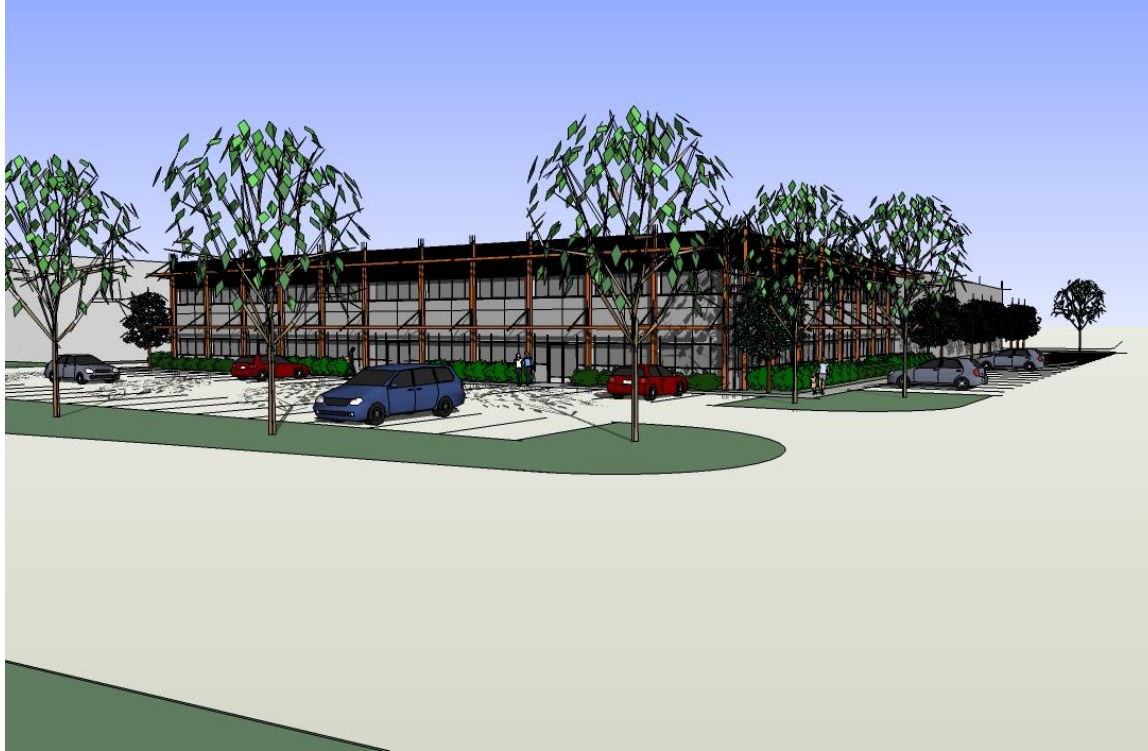
Vandewalle & Associates
© 2007





E3

Economic Development and New Bookstore



Flex Tech

Business Incubation Space



Enterprise Lofts

19th and River Drive (14 blocks from Campus)



Moline Multimodal Station

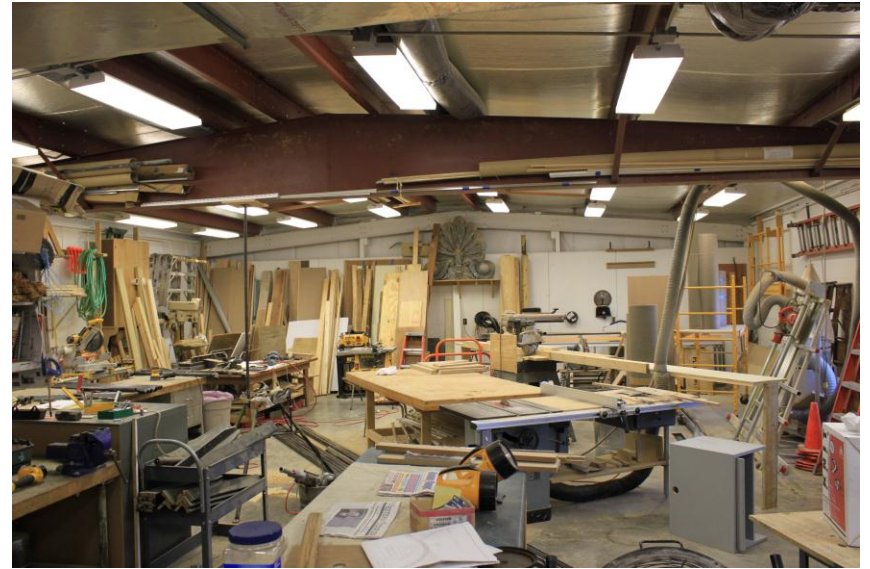
7. Flexibility

Advancements to our facilities and infrastructure not foreseen at the time of writing Campus Master Plans

Flexibility

- Creating an asbestos removal team to save the cost of out sourcing work
 - Corbin-Olson
 - Lamoine Village
 - Lincoln-Washington Halls
- Conducted a design study to repurpose Physical Plant East to an administrative area

Physical Plant East



Flexibility

- Received Construction Funding for the new Go West Bus Garage
- Initiated Program and Design Studies for:

Expanding Beu Health Center



Renovating Heating Plant Annex to be used by the Art Department



University's portion of MAEDCO to be used by Illinois Law Enforcement Executive Institute



Summary

- Macomb Campus Master Plan 20 Year Vision
 - It contains 48 actions
 - 35% are complete or in progress
- Quad Cities Master Plan is a 20 Year Vision
 - Phase I in construction
 - Phase II in design
 - Phase III seeking funding



Fiscal Year 2011 Master Plan Update

WE ARE GETTING THE JOB DONE!