



Rocky Builds

Fiscal Year 2009 Campus Master Plan Update



Rocky Sustains

Master Plan Accomplishments: Focusing on Our Many Learning Environments, as “The Campus is the Classroom”



Electronic Classroom Upgrade Program

CAS	COBT	COEHS	COFAC	WIU-QC
Waggoner 171	Stipes 120	Horrabin 26	Sallee 226	113
Currens 205	Knoblauch 330	Horrabin 44	Sallee 228	114
Morgan 101B	Stipes 201	Horrabin 7	Tilman 307	102C
Morgan 109	Stipes 207	Brophy 224	Tilman 212	B16
Waggoner 3	Stipes 210	Currens 204	Sallee 101	B17
Waggoner 54	Stipes 224	Horrabin 78		106
Currens 203	Knoblauch 305	Horrabin 82		
		Horrabin 83		
		Brophy 227		

CAS	COBT	COEHS	COFAC	WIU-QC
<u>Waggoner 171</u>	<u>Stipes 120</u>	Horrabin 26	Sallee 226	113
Currens 205	Knoblauch 330	Horrabin 44	Sallee 228	114
Morgan 101B	Stipes 201	Horrabin 7	Tilman 307	102C
Morgan 109	Stipes 207	Brophy 224	<u>Sallee 101</u>	B16
Waggoner 3	Stipes 210	Currens 204	Tilman 212	B17
Waggoner 54	Stipes 224	Horrabin 78		106
Currens 203	Knoblauch 305	Horrabin 82		
		Horrabin 83		
		Brophy 227		

Horrabin 26



Horrabin 26



Tilman 307



Tilman 307



Other Learning Locations for Electronic Classrooms

Thompson Hall



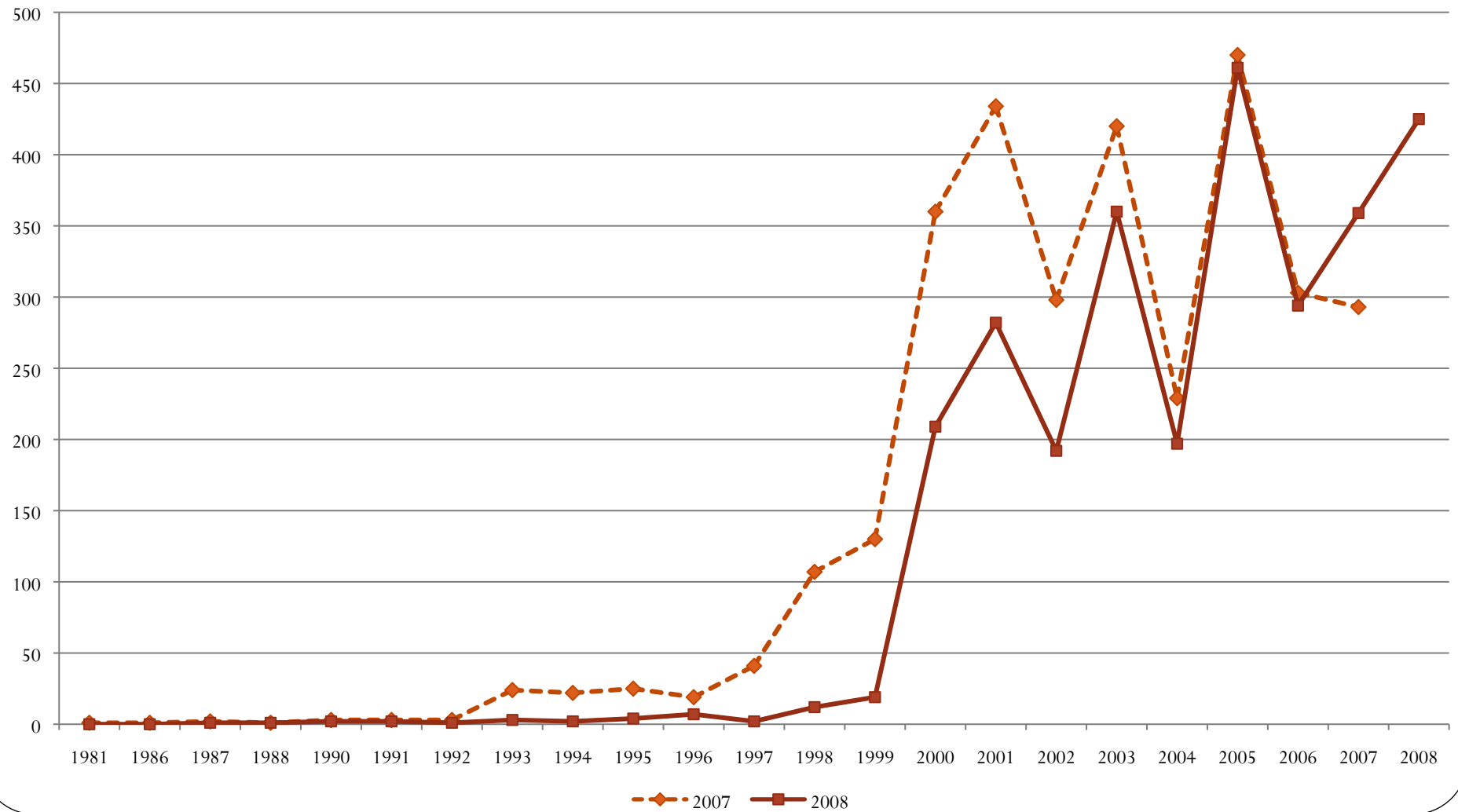
Grote Hall



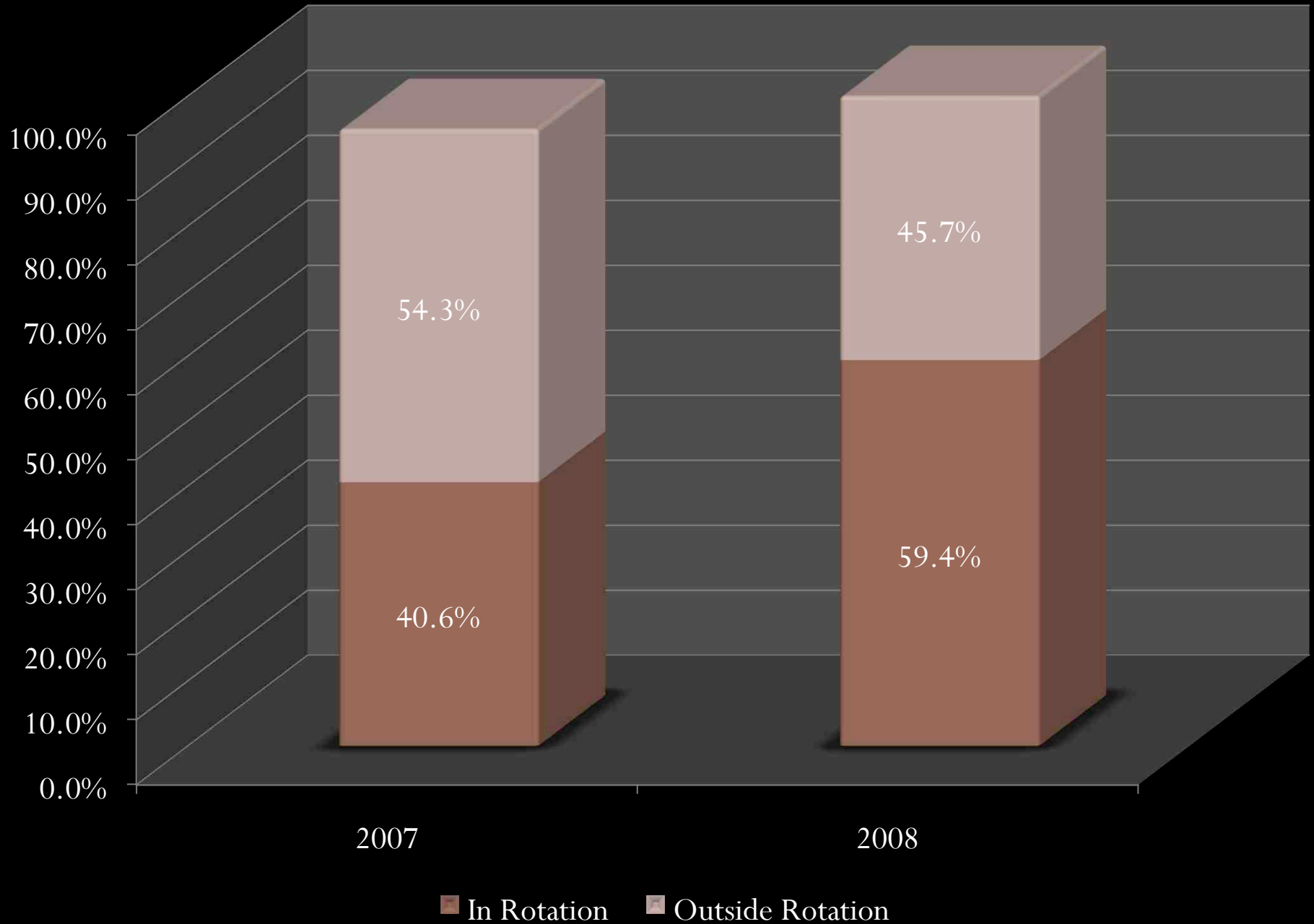
Sandburg Theatre



Age of Faculty Computers



Percent of Computers in the Four Year Rotation



Performing Arts Center





Work by Building

FUTURE SITE OF



MULTICULTURAL
CENTER







Home of University Technology



University Technology





Future Home of Dividens Coffee Bar



DIVIDENDS

In Conjunction With
First Bankers
Trust Company N.A.
FIRE







Donald S. Spencer Student Recreation Center Expansion

Weight Room Expansion



Stationary Bikes





Other Short-Term Projects

Volleyball Court in Brophy



Western Hall Court





Bookstore







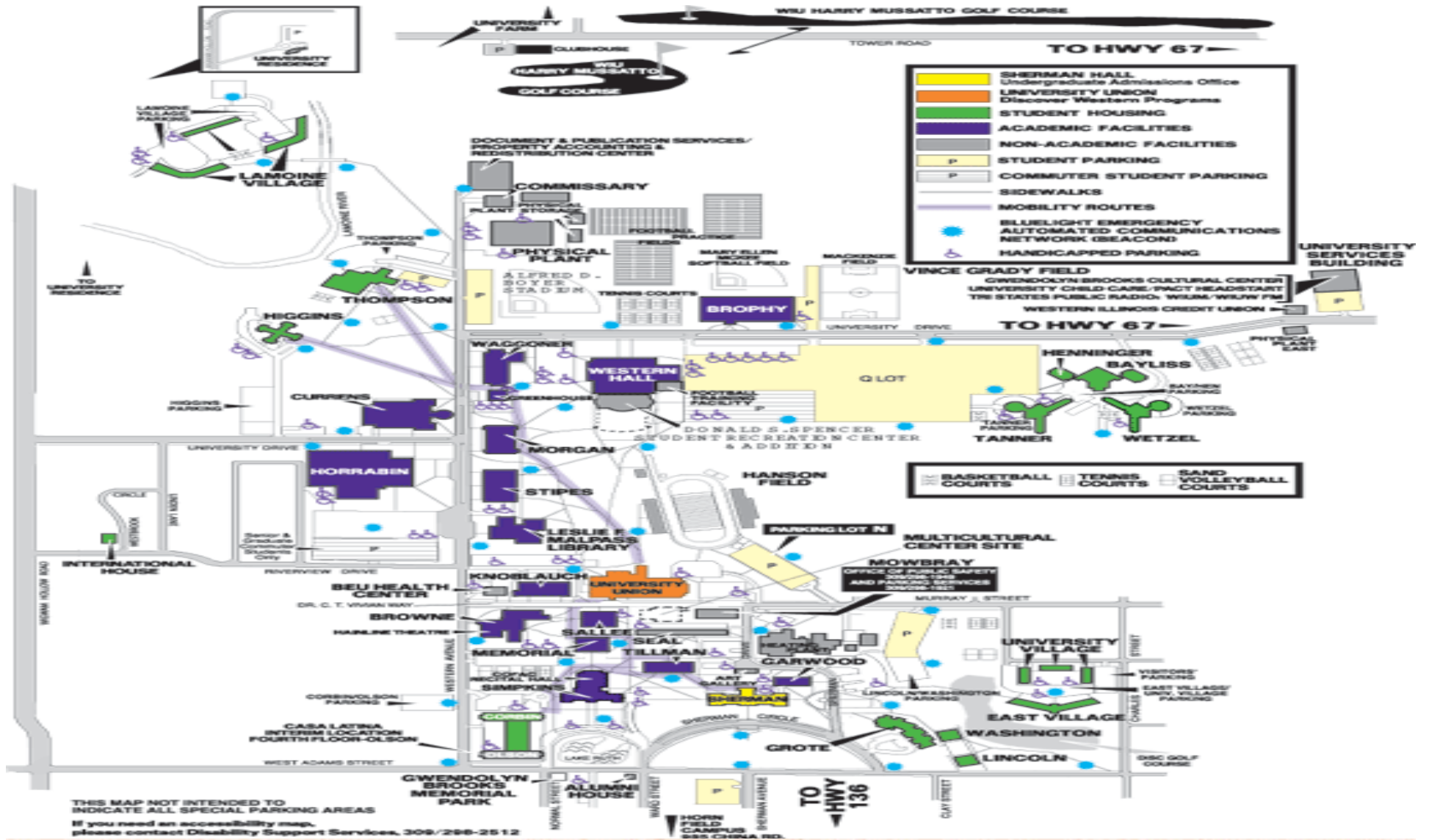
WESTERN ILLINOIS UNIVERSITY

University Housing & Dining Services

Master Plan

Phase 1 Summary





THIS MAP NOT INTENDED TO INDICATE ALL SPECIAL PARKING AREAS
 If you need an accessibility map, please contact Disability Support Services, 309/298-2512





THE ADAMS STREET STRATEGIC PLAN

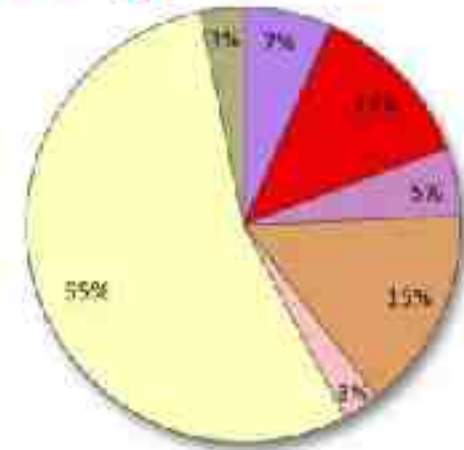
PROGRESS UPDATE

Adams Street Study Area



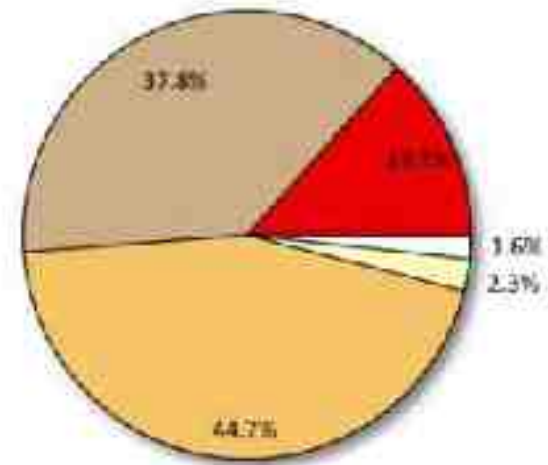
Existing Land Use Inventory

Land Use	Square Feet	Acres	% of Total
Single-family	2,060,026.4	47.3	55%
Multi-family	571,581.6	13.1	15%
Commercial	480,666.0	11.0	13%
Civic	246,585.6	5.7	7%
Industrial	191,852.5	4.4	5%
Office	106,188.6	2.4	3%
Vacant	113,605.9	2.6	3%
Public	7,869.4	0.2	0%
Grand Total	3,778,376.0	86.7	100%



Housing Conditions

Condition	# of Units	% of Total
Excellent	7	2.3%
Good	136	44.7%
Fair	115	37.8%
Poor	41	13.5%
Dilapidated	5	1.6%
Total	304	100.0%



Street & Sidewalk Conditions



Obliterated



Curb connection



Brick – uneven and overgrown



THE ADAMS STREET STRATEGIC PLAN

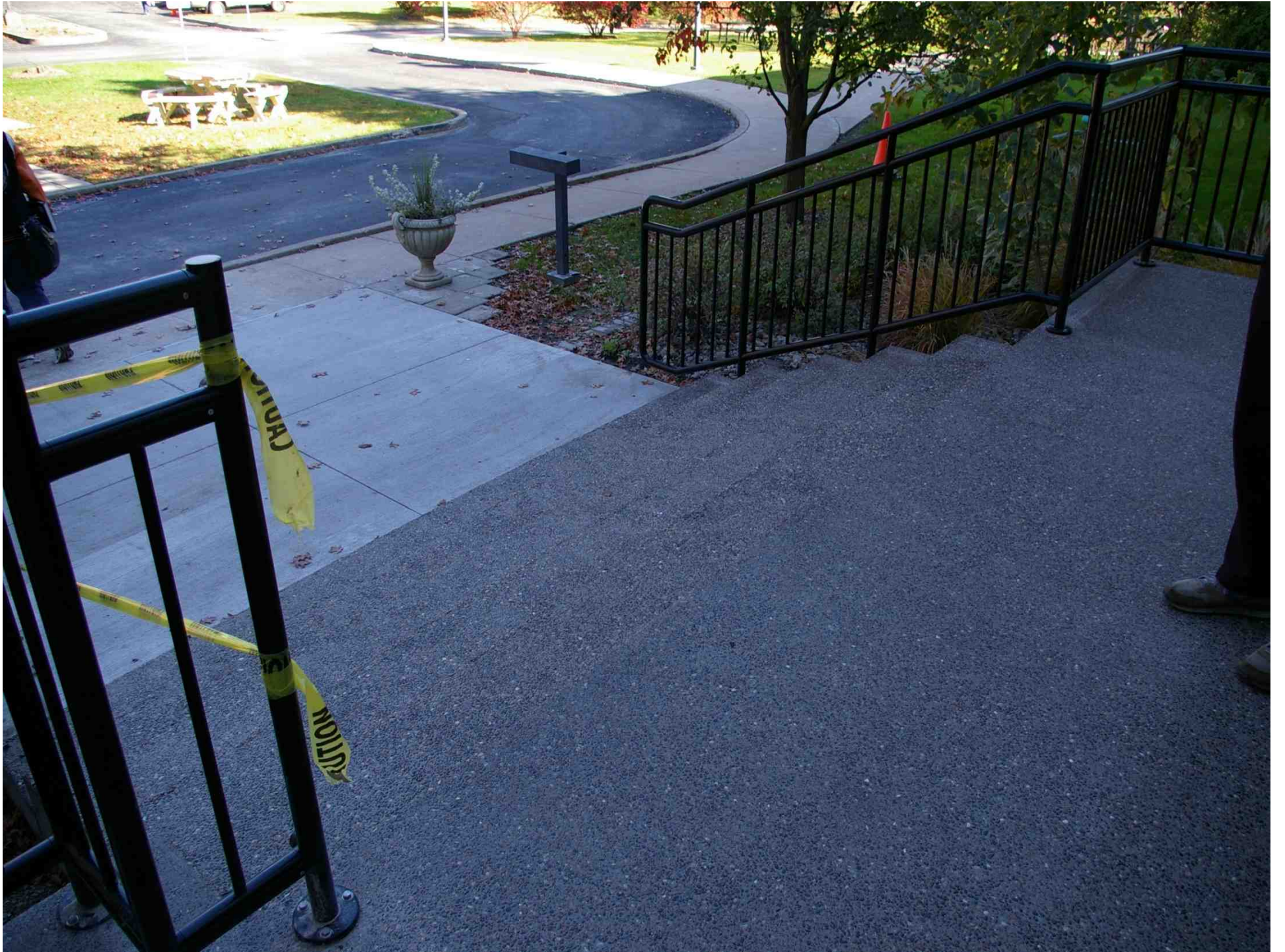
PROGRESS UPDATE



Moline, IL



Quad Cities Campus



Scott County Room (113)



Seminar Room

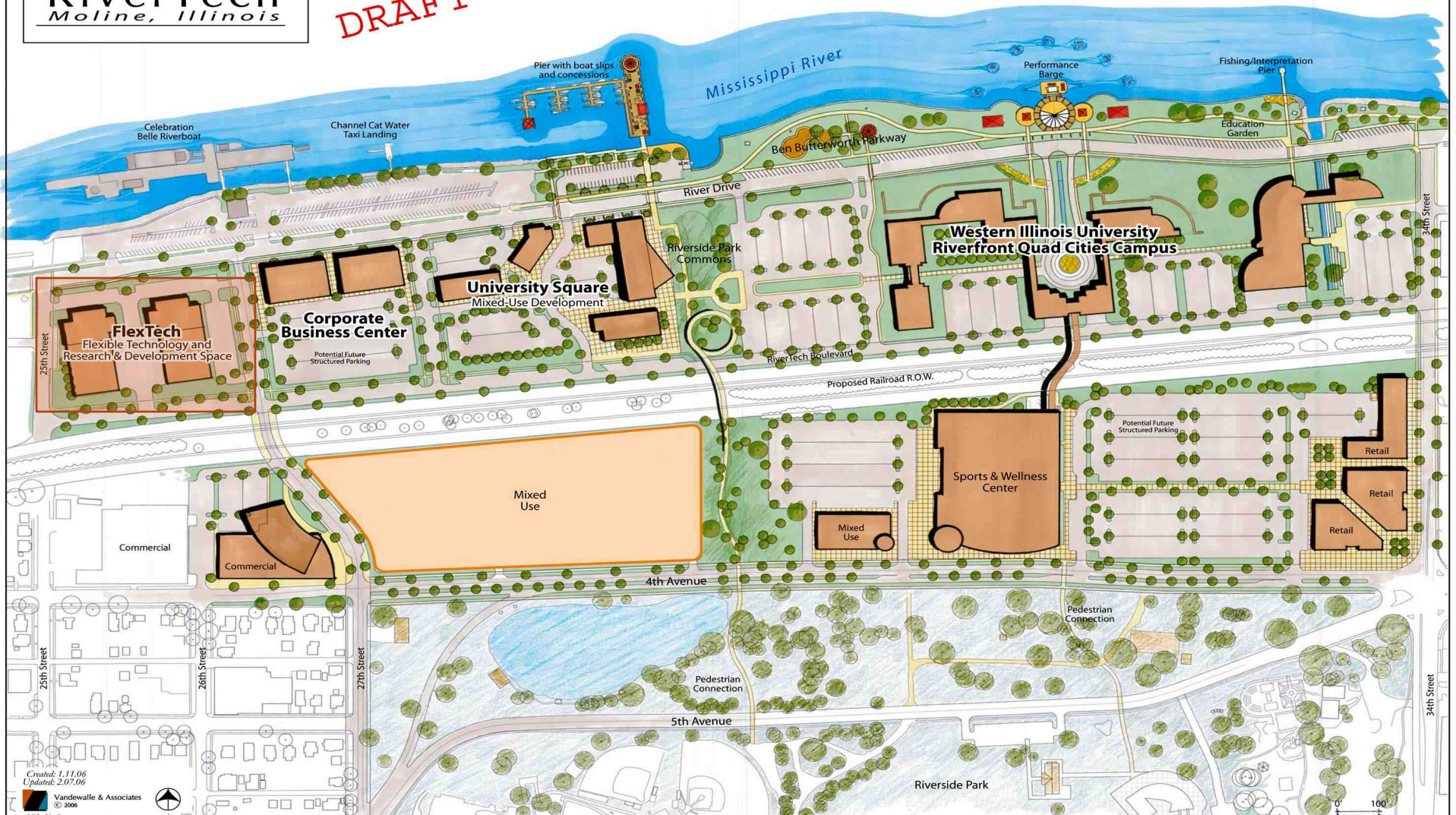




Future Site of the Engineering Program

RiverTech
Moline, Illinois

DRAFT



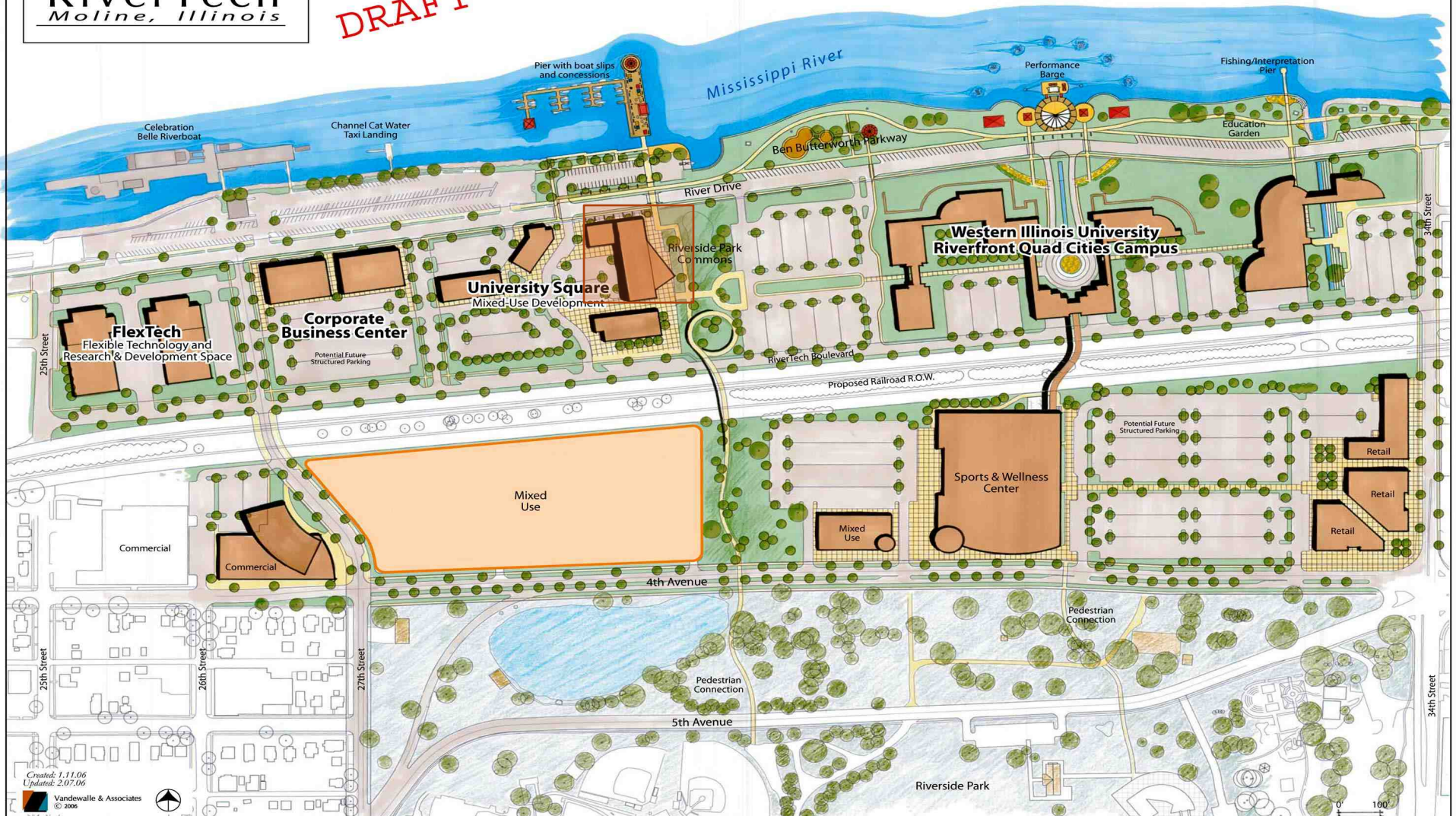




Future Site of the Engineering Program

RiverTech
Moline, Illinois

DRAFT

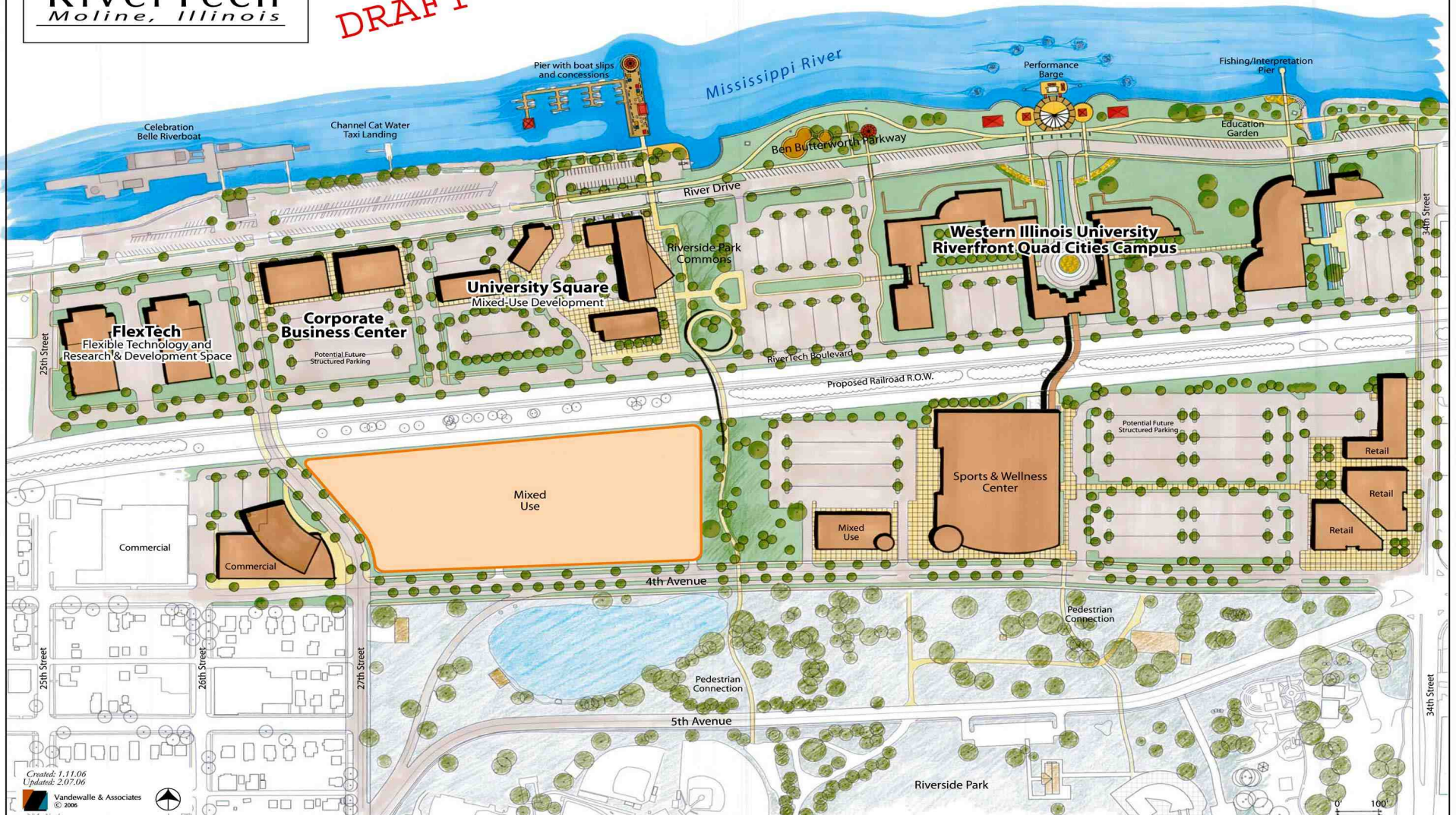




Future Site of the Engineering Program

RiverTech
Moline, Illinois

DRAFT





Moline, IL

Home of Our Museum Studies Program





FIGGE
Mother & Child
Henry Moore's
Wit Don Tapscott
Arts 12, 2008 to
January 11, 2009

WIT DON TAPSCOTT
ARTS 12
JANUARY 11, 2009



Site of Our New Testing Center and Potentially Classes





Rocky Builds



Rocky Sustains



69 new bins



25 new LED Signs





We Care Activities on both Campuses

Sustainability Accomplishments



Rocky Sustains

- Increased usage of Green Seal cleaning products by 400 gallons (a 67-percent increase).
- Purchased four new Hybrid Toyota Prius vehicles, for a total of eight hybrids in the fleet.
- Successfully employed a sugar beet based deicer in winter 2008 as an additive to salt used for deicing.

Sustainability Accomplishments



Rocky Sustains

- Campus-wide recycling efforts yielded:
 - 829 palettes (approximately 18.7 tons).
 - 98.9 tons of scrap iron.
 - 10.4 tons of confidential shredded paper items.
 - 51 tons of library books.
- Placed 17th out of 61 schools in national “Recyclemania” contest

Sustainability Accomplishments



Rocky Sustains

- Educational efforts included sponsoring:
 - Dr. Robin Rosenberg to speak on “Challenges to Environmental Sustainability in Latin America.”
 - Mr. Chad Pregracke of Living Lands and Waters to speak on the Mississippi River clean-up initiative.
 - Mr. Stephen Hamstra, AEE Midwest Energy Management Professional of the Year to speak on the importance of LEED design.
 - Mr. Thomas Hylton, author of Save Our Land Save Our Towns to speak at the University’s annual Environmental Summit.

Sustainability Accomplishments



Rocky Sustains

- Western Illinois University and the U.S. Army Corps of Engineers' Rock Island District signed a Memorandum of Understanding to support the shared goals of protecting natural resources and enhancing environmental sustainability in the region.
- Western Illinois University students and faculty participated in the inaugural Upper Mississippi River Conference Thursday-Saturday, Aug. 21-23 at the i wireless Center in Moline.
- www.wiu.edu/sustainability

What's Next for Master Planning?



Rocky Builds



Rocky Sustains



“We celebrate plurality of thought in safe, secure, and aesthetically pleasing living, learning, and working environments that reflect the core values of the University.”

Partnerships with the State: Fiscal Year 2010 Capital Recommendations

Project	Cost
Western Illinois University-Macomb Performing Arts Center	\$66.9 Million
Western Illinois University-Quad Cities Building One	\$15.9 Million
Western Illinois University-Macomb Utility Infrastructure Planning	\$4.1 Million
Western Illinois University-Quad Cities Building Two Planning	\$3.9 Million
Western Illinois University-Life Safety Enhancements	\$12.0 Million
Western Illinois University-Macomb Science Complex	\$9.0 Million

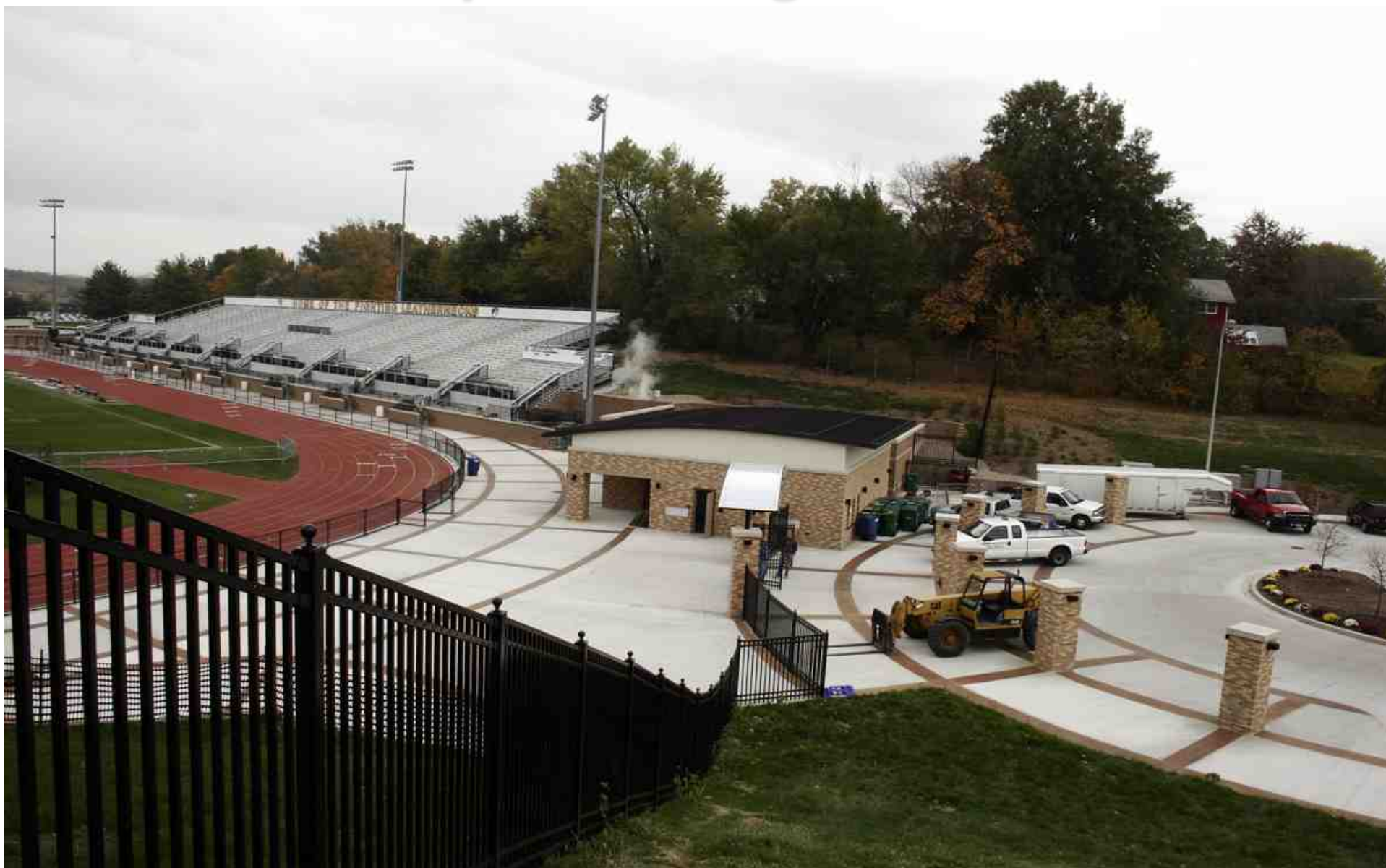
East Side before August 2007



Courtesy HNTB

EXISTING STADIUM

Phase One Completed August 2007



Current West Side Press Box

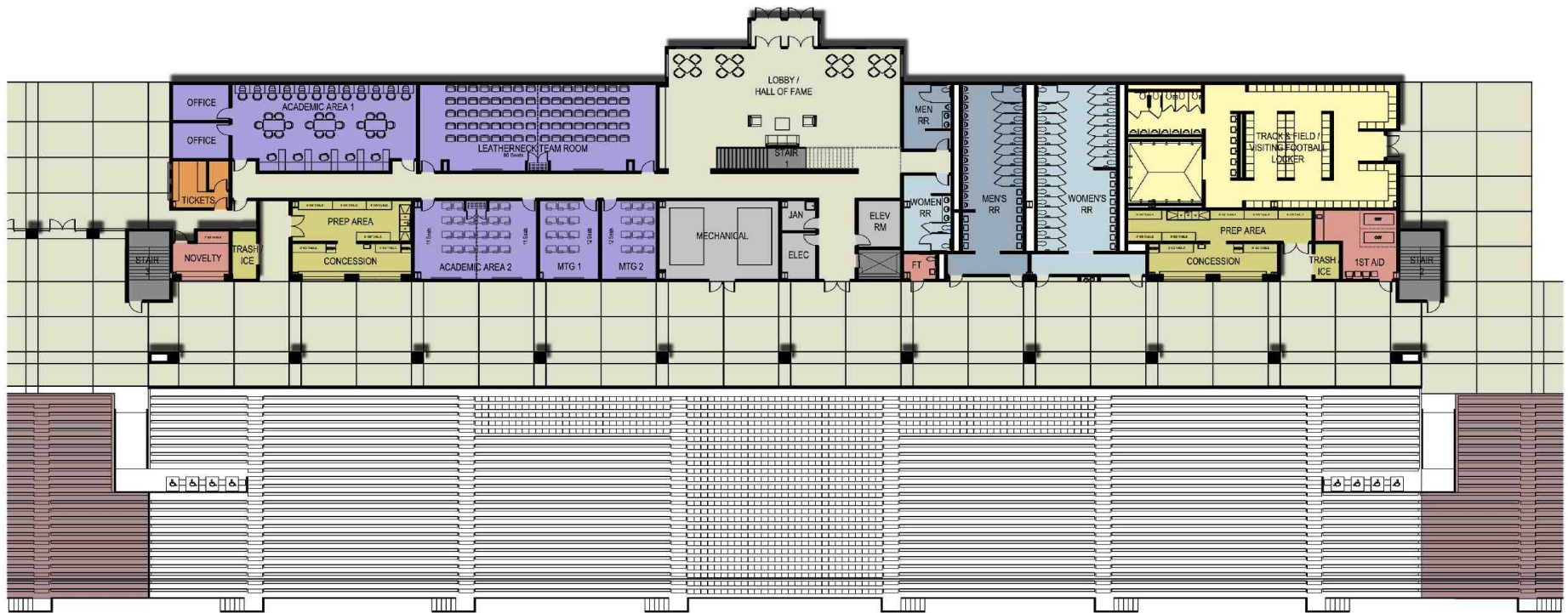


Phase Two Proposal

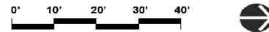
View From Southeast



Main Concourse Level

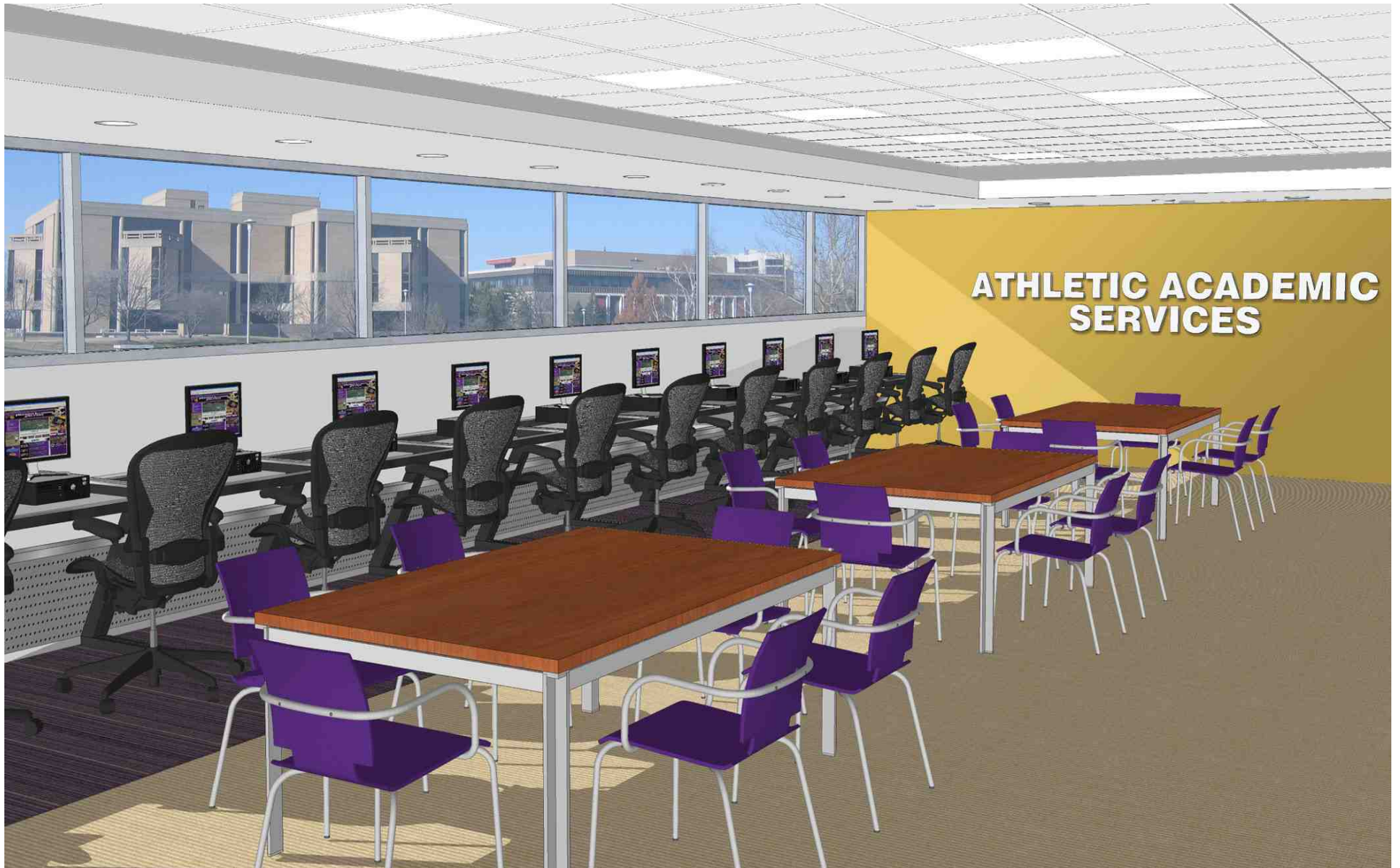


- LEGEND**
- Academic areas
 - Women's Toilet
 - Men's Toilet
 - Concessions
 - Spectator Support
 - Circulation
 - Support
 - Vertical Circulation
 - Lockers
 - Tickets
 - Possible Expansion



Floor Plan - Main Concourse Level

Athletics Academic Services Center



**ATHLETIC ACADEMIC
SERVICES**

Coaches Offices/Suites/Press Level



- LEGEND**
- Coach Support
 - Women's Toilet
 - Men's Toilet
 - Concessions
 - Media Facilities
 - Circulation
 - Support
 - Vertical Circulation
 - Suites

Floor Plan - Suite / Office / Press Level



HANSON FIELD RENOVATION - WEST SIDELINE
Western Illinois University

10.20.2008



Coaches Office and Game Day Suite



Transformational Campus Facility

Goals/Outcomes

- Enhance Campus Aesthetics
 - *University Pride*
 - *Department Pride*
- Enhance Recruiting/Retention
 - *All Students, Faculty, Staff*
 - *Football Student-Athletes*
 - *All Student-Athletes*
- Celebrate Leatherneck Football History and Tradition
- Enhance Game Day Experience
- Improve Life Safety and Code Compliance

365 Facility

- Coaches Offices (360 days)
- Game Day Suites (5-6 days)
- Athletics Academic Services
- Campus Classroom Space
- Track/Field Locker Room
- Campus Use
 - *Entertainment*
 - *Meetings*
- Pre-Game Activities
- Community Use
 - *Entertainment*
 - *Meetings*
- All Sports Facility Use

Phase Two Proposal



